

2:1

Shown:
The drawing illustrates a contact body with an engaged inner conductor

RoHS compliant
by exemption

Crimping tools for outer conductor
see document 2195600660

Cable RG58CU, RG141AU, RG142BU

1731120185	FMS026S102	102
Material Number	FCT Part Number	Material + Finish See extra sheet

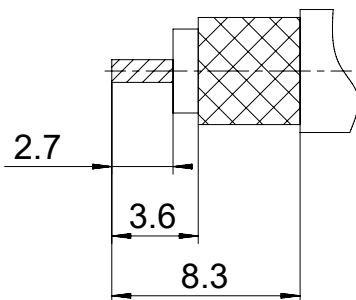
Crimping tools:
Crimping of inner conductor:

Hand tool: 1731121730
Locator: K778-3

Pneumatic crimp tool: WA22
Locator: K778-3

Cable:
AWG 20 / SEL. 7

Cable trimming
dimensions



UNLESS OTHERWISE SPECIFIED DIMENSIONS FOR REFERENCE ONLY				REPLACEMENT FOR DOCUMENT NUMBER: FMS026S102								
THIS DRAWING CONTAINS INFORMATION THAT IS PROPRIETARY TO MOLEX ELECTRONIC TECHNOLOGIES, LLC AND SHOULD NOT BE USED WITHOUT WRITTEN PERMISSION												
FUNCTIONAL SYMBOLS	DIMENSION UNITS	SCALE	CURRENT REV DESC:									
$\frac{F_A}{A} = 0$	mm	5:1	EC NO: 710219									
$\frac{F_E}{E} = 0$	GENERAL TOLERANCES (UNLESS SPECIFIED)		DRWN: VLOKESHA 2021/04/20									
$\frac{F_P}{P} = 0$	ANGULAR TOL ± °		CHK'D: MTEUBEL 2022/06/22									
DIVISIONAL SYMBOLS	4 PLACES ±		APPR: MTEUBEL 2022/06/22									
	3 PLACES ±		INITIAL REVISION:									
	2 PLACES ±		DRWN: VLOKESHA 2021/04/20									
	1 PLACE ±		APPR: MTEUBEL 2022/06/22									
	0 PLACES ±		DRAFT WHERE APPLICABLE MUST REMAIN WITHIN DIMENSIONS		FIRST ANGLE PROJECTION	DRAWING	SERIES	MATERIAL NUMBER	CUSTOMER	DOC TYPE	DOC PART	REVISION
						A4-SIZE	173112	SEE TABLE	GENERAL MARKET	PSD	000	A
DOCUMENT STATUS			P1	RELEASE DATE	2022/06/22	10:22:30						

molex

FCT 50 OHM COAXIAL CONTACT
FOR D-SUB

PRODUCT CUSTOMER DRAWING

DOCUMENT NUMBER: 1731120185
DOC TYPE: PSD
DOC PART: 000
REVISION: A