

Data sheet

17289.0 Q 10



Cross-connector, No. of poles: 10, Mounting type: Can be screwed on, Width: 153 mm, Rated cross-section: 35 mm², Colour: natural

Business data

| | |
|--|-----------------|
| Article number | 17289.0 |
| Article name | Q 10 |
| GTIN (EAN) | 4044211180355 |
| Packaging unit | 10 |
| Quantity unit | PC |
| Weight per piece (not including packaging) | 57.03 g |
| Weight per piece (including packaging) | 57.13 g |
| Unit of weight | G |
| Customs number | 85389099 |
| Country of origin | CZ |
| Product description | Cross-connector |
| Colour | Natural |

Technical data

Dimensions

| | |
|---------------------------------------|--------|
| Length | 8 mm |
| Width | 153 mm |
| Hole diameter | 4.1 mm |
| Hole spacing (mid-point to mid-point) | 16 mm |
| Pitch size | 16 mm |

Ratings

| | |
|---------------------------------|--------------------|
| Max. voltage | 1000 V |
| Voltage with partition, max. | 1000 V |
| Voltage without partition, max. | 1000 V |
| Rated current | 125 A |
| Rated cross-section | 35 mm ² |
| Contamination degree | 3 |

Connection data

| | |
|-------------------------|---------|
| No. of poles | 10 |
| Screw head | Slotted |
| Screw threading | M 4 |
| Tightening torque, min. | 1.2 Nm |
| Tightening torque, max. | 2 Nm |

Materials

| | |
|---------------|------------|
| Material | Copper |
| Surface | Tin-plated |
| Surface screw | Galvanized |

Further technical data

| | |
|-----------------------------|-----------|
| Mounting type | Screwable |
| Number of bridged terminals | 10 |

Environmental Product Compliance

| | |
|--------------------------------|------------|
| REACH Conform | yes |
| REACH Reference date | 2023-06-14 |
| REACH Candidate Substance Note | No |
| RoHS Conform | yes |

Media



Accessories

##INVERSE##CONTA-CONNECT



Feed-through terminal, Screw connection, Mounting type: Mounting rail TS 35/7.5, Rated cross-section: 35 mm², Width: 16 mm, Colour: Black

| Article number | Article name | GTIN (EAN) | Packaging unit |
|----------------|--------------------|---------------|----------------|
| <u>17376.4</u> | RK 35/35 N PA-G BK | 4044211186562 | 20 ST |



Feed-through terminal, Screw connection, Mounting type: Mounting rail TS 35/7.5, Rated cross-section: 35 mm², Width: 16 mm, Colour: Black-yellow

| Article number | Article name | GTIN (EAN) | Packaging unit |
|----------------|--------------------|---------------|----------------|
| <u>17374.2</u> | RK 35/35 N/PE BKYE | 4044211186548 | 20 ST |



Feed-through terminal, Screw connection, Mounting type: Mounting rail TS 35/7.5, Rated cross-section: 35 mm², Width: 16 mm, Colour: Black-yellow

| Article number | Article name | GTIN (EAN) | Packaging unit |
|----------------|-----------------------|---------------|----------------|
| <u>17375.2</u> | RK 35/35 N/PE/IS BKYE | 4044211186555 | 20 ST |



Feed-through terminal, Screw connection, Mounting type: Mounting rail TS 35/7.5, Rated cross-section: 35 mm², Width: 16 mm, Colour: Beige

| Article number | Article name | GTIN (EAN) | Packaging unit |
|----------------|--------------------|---------------|----------------|
| <u>17373.2</u> | RK 35/35 N/Z/IS BG | 4044211186449 | 20 |



Feed-through terminal, Screw connection, Mounting type: Mounting rail TS 35/7.5, Rated cross-section: 35 mm², Width: 16 mm, Colour: Black

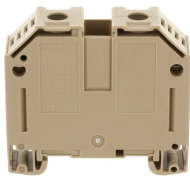
| Article number | Article name | GTIN (EAN) | Packaging unit |
|----------------|--------------------|---------------|----------------|
| <u>17376.4</u> | RK 35/35 N PA-G BK | 4044211186562 | 20 ST |



Feed-through terminal, Screw connection, Mounting type: Mounting rail TS 35/7.5, Rated cross-section: 35 mm², Width: 16 mm, Colour: Black-yellow

| Article number | Article name | GTIN (EAN) | Packaging unit |
|----------------|-----------------------|---------------|----------------|
| <u>17375.2</u> | RK 35/35 N/PE/IS BKYE | 4044211186555 | 20 ST |

##INVERSE##CONTA-CONNECT



Feed-through terminal, Screw connection, Mounting type: Mounting rail TS 35/7.5, Rated cross-section: 35 mm², Width: 16 mm, Colour: Beige

| Article number | Article name | GTIN (EAN) | Packaging unit |
|----------------|---------------|---------------|----------------|
| <u>17370.2</u> | RK 35/35 N BG | 4044211185473 | 20 |