

Cross-connector, No. of poles: 2, Mounting type: Can be screwed on, Width: 44 mm, Rated cross-section: 120 mm², Colour: natural

**Business data**

Article number	17278.0
Article name	SQ 120/2
GTIN (EAN)	4044211189471
Packaging unit	10
Quantity unit	PC
Weight per piece (not including packaging)	64.92 g
Weight per piece (including packaging)	65.2 g
Unit of weight	G
Customs number	85389099
Country of origin	DE
Product description	Cross-connector
Colour	Natural

### Technical data

#### Dimensions

Length	10 mm
Width	44 mm
Height	27.5 mm
Hole diameter	5.5 mm
Hole spacing (mid-point to mid-point)	27 mm
Pitch size	27 mm

#### Ratings

Max. voltage	1000 V
Rated current	269 A
Current load, max.	290 A
Rated cross-section	120 mm <sup>2</sup>
Contamination degree	3

#### Connection data

No. of poles	2
Screw head	Slotted
Screw threading	M 6
Tightening torque, min.	3.2 Nm
Tightening torque, max.	3.7 Nm

#### Materials

Material	Copper
Surface	Tin-plated
Surface screw	Galvanized

#### Further technical data

Mounting type	Screwable
Number of bridged terminals	2

#### Environmental Product Compliance

REACH Conform	yes
REACH Reference date	2023-06-14
REACH Candidate Substance Note	No
RoHS Conform	yes

---

**Media**

---



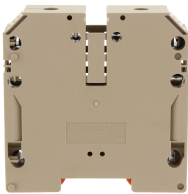
Accessories

##INVERSE##CONTA-CONNECT



Feed-through terminal, Screw connection, Mounting type: Mounting rail TS 35/7.5, Rated cross-section: 120 mm<sup>2</sup>, Width: 27 mm, Colour: Black-yellow

Article number	Article name	GTIN (EAN)	Packaging unit
<a href="#">17167.2</a>	SRK 120/2A/PE BKYE	4044211189396	5 ST



Feed-through terminal, Screw connection, Mounting type: Mounting rail TS 35/7.5, Rated cross-section: 120 mm<sup>2</sup>, Width: 27 mm, Colour: Beige

Article number	Article name	GTIN (EAN)	Packaging unit
<a href="#">17165.2</a>	SRK 120/2A BG	4044211189372	5