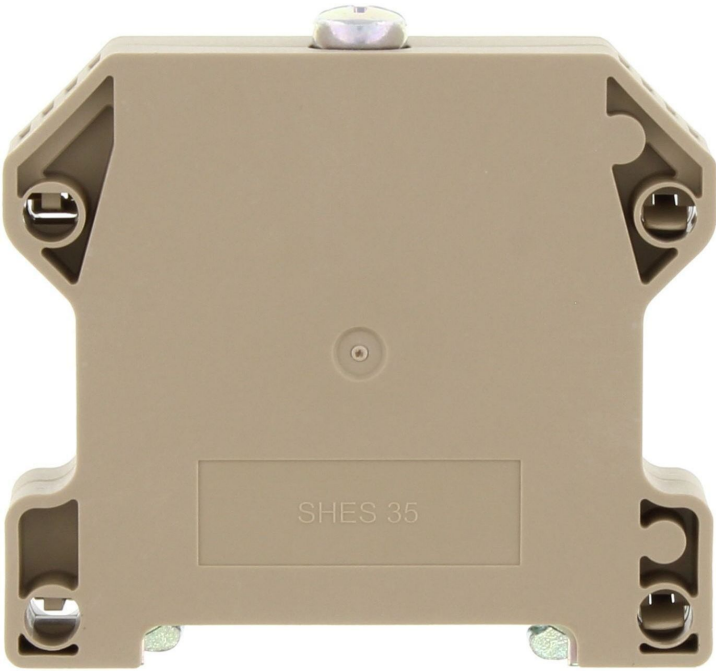


Data sheet
17259.2 SHES 35 BG



End stop, Mounting type: Mounting rail TS 35/7.5 and TS 35/15, Width: 13.4 mm, Colour: Beige

Business data

Article number	<u>17259.2</u>
Article name	SHES 35 BG
GTIN (EAN)	4044211190903
Packaging unit	20
Quantity unit	PC
Weight per piece (not including packaging)	73.49 g
Weight per piece (including packaging)	74.49 g
Unit of weight	G
Customs number	85389099
Country of origin	CZ
Product description	End bracket
Colour	Beige

Technical data

Dimensions

Length	66 mm
Width	13.4 mm
Height	60.5 mm
Height TS 35/7.5	64 mm
Height TS 35/15	71.5 mm

Materials

Material	Polyamide 6.6
Flammability class UL 94	V-2
Working temperature, min.	-40 °C
Working temperature, max.	105 °C

Further technical data

Mounting type	Mounting rail TS 35/7,5 and TS 35/15
Tightening torque, fastening screw max.	4 Nm
Tightening torque, fastening screw min.	2 Nm

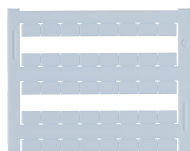
Environmental Product Compliance

REACH Conform	yes
REACH Reference date	2023-06-14
REACH Candidate Substance Note	No
RoHS Conform	yes

Media

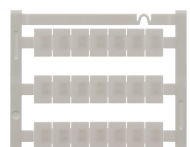
Accessories

Quick marking



Terminal marker / Pocket Maxicard, Length: 5 mm, Width: 8 mm, Colour: White

Article number	Article name	GTIN (EAN)	Packaging unit
<u>9323.7</u>	PMC SB 8/40 WH	4044211129231	400 ST



Terminal marker / Pocket Maxicard, Length: 12 mm, Width: 8 mm, Colour: White

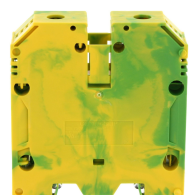
Article number	Article name	GTIN (EAN)	Packaging unit
<u>9410.7</u>	PMC BSTR 8x12/21 WH	4044211154998	210 ST

##INVERSE##CONTA-CONNECT



Protective earth terminal, Screw connection, Mounting type: Mounting rail TS 35/7.5, Rated cross-section: 50 mm², Width: 18.5 mm, Colour: Green-yellow

Article number	Article name	GTIN (EAN)	Packaging unit
<u>17158.2</u>	SSL 50/2A GNYE	4044211186739	10 ST



Protective earth terminal, Screw connection, Mounting type: Mounting rail TS 35/7.5, Rated cross-section: 70 mm², Width: 20.5 mm, Colour: Green-yellow

Article number	Article name	GTIN (EAN)	Packaging unit
<u>17163.2</u>	SSL 70/2A GNYE	4044211189297	10 ST