



Insulated cross-connector, No. of poles: 2, Mounting type: Plug in, Width: 20 mm, Rated cross-section: 16 mm², Colour: Yellow

**RAL:** 1026

**Business data**

Article number	17247.8
Article name	SQI 16/2 YE
GTIN (EAN)	4044211181116
Packaging unit	20
Quantity unit	PC
Weight per piece (not including packaging)	6.5 g
Weight per piece (including packaging)	6.6 g
Unit of weight	G
Customs number	85389099
Country of origin	DE
Product description	Insulated cross-connector
Colour	Yellow

# Data sheet

## 17247.8 SQI 16/2 YE

### Technical data

#### Dimensions

Length	6.2 mm
Width	20 mm
Height	28.3 mm
Pitch size	12 mm

#### Ratings

Voltage with partition, max.	1000 V
Voltage without partition, max.	1000 V
Rated current	76 A
Current load, max.	76 A
Rated cross-section	16 mm <sup>2</sup>
Contamination degree	2

#### Connection data

No. of poles	2
--------------	---

#### Materials

Material	Bronze
Surface	Tin-plated
Insulation housing	Polyamide 6.6
Flammability class UL 94	V-2
Working temperature, min.	-40 °C
Working temperature, max.	105 °C

#### Further technical data

Mounting type	Plug in
Insulation available	✓
Touch protection is available	✓
Number of bridged terminals	2

#### Environmental Product Compliance

REACH Conform	yes
REACH Reference date	2023-06-14
REACH Candidate Substance Note	No
RoHS Conform	yes

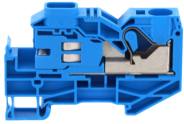
---

**Media**

---

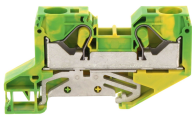
### Accessories

#### ##INVERSE##CONTA-CONNECT



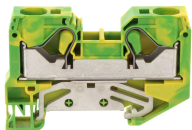
Neutral-disconnect terminal, Push-in connection, Mounting type: Mounting rail TS 35/7.5,  
Rated cross-section: 16 mm<sup>2</sup>, Width: 12.1 mm, Colour: Blue

Article number	Article name	GTIN (EAN)	Packaging unit
<u>3275.5</u>	FNT 16 BU	4044211138998	50 ST



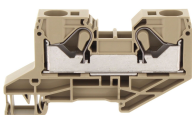
PE installation terminal, Push-in connection, Mounting type: Mounting rail TS 35/7.5,  
Colour: Green-yellow

Article number	Article name	GTIN (EAN)	Packaging unit
<u>3281.2</u>	FSLI 16/2A GNYE	4044211139186	50 ST



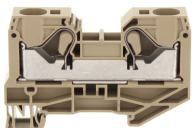
Protective earth terminal, Push-in connection, Mounting type: Mounting rail TS 35/7.5,  
Colour: Green-yellow

Article number	Article name	GTIN (EAN)	Packaging unit
<u>3299.2</u>	FSL 16/2A GNYE	4044211199869	50 ST



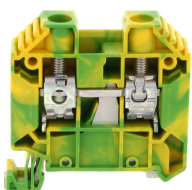
Feed-through installation terminal, Push-in connection, Mounting type: Mounting rail TS 35/7.5,  
Colour: Beige

Article number	Article name	GTIN (EAN)	Packaging unit
<u>3278.2</u>	FRKI 16/2A BG	4044211139063	50



Feed-through terminal, Push-in connection, Mounting type: Mounting rail TS 35/7.5,  
Colour: Beige

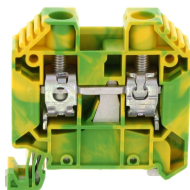
Article number	Article name	GTIN (EAN)	Packaging unit
<u>3294.2</u>	FRK 16/2A BG	4044211199838	50



Protective earth terminal, Screw connection, Mounting type: Mounting rail TS 35/7.5,  
Rated cross-section: 16 mm<sup>2</sup>, Width: 10 mm, Colour: Green-yellow

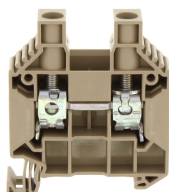
Article number	Article name	GTIN (EAN)	Packaging unit
<u>17131.2</u>	SSL 16/2A/IS GNYE	4044211181079	50 ST

### ##INVERSE##CONTA-CONNECT



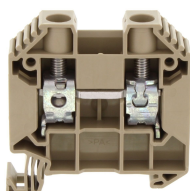
Protective earth terminal, Screw connection, Mounting type: Mounting rail TS 35/7.5, Rated cross-section: 16 mm<sup>2</sup>, Width: 12.1 mm, Colour: Green-yellow

Article number	Article name	GTIN (EAN)	Packaging unit
<u>17130.2</u>	SSL 16/2A GNYE	4044211181062	50 ST



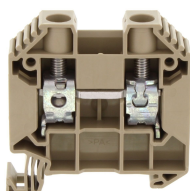
Feed-through terminal, Screw connection, Mounting type: Mounting rail TS 35/7.5, Rated cross-section: 16 mm<sup>2</sup>, Width: 12.1 mm, Colour: Beige

Article number	Article name	GTIN (EAN)	Packaging unit
<u>17134.2</u>	SRK 16/2A/H BG	4044211206192	50 ST



Feed-through terminal, Screw connection, Mounting type: Mounting rail TS 35/7.5, Rated cross-section: 16 mm<sup>2</sup>, Width: 12.1 mm, Colour: Beige

Article number	Article name	GTIN (EAN)	Packaging unit
<u>17124.2</u>	SRK 16/2A BG	4044211180942	50



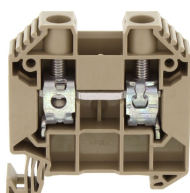
Feed-through terminal, Screw connection, Mounting type: Mounting rail TS 35/7.5, Rated cross-section: 16 mm<sup>2</sup>, Width: 12.1 mm, Colour: Beige

Article number	Article name	GTIN (EAN)	Packaging unit
<u>17127.2</u>	SRK 16/2A/Z/IS BG	4044211181048	50 ST



Feed-through terminal, Screw connection, Mounting type: Mounting rail TS 35/7.5, Rated cross-section: 16 mm<sup>2</sup>, Width: 12.1 mm, Colour: Black-yellow

Article number	Article name	GTIN (EAN)	Packaging unit
<u>17128.2</u>	SRK 16/2A/PE BKYE	4044211199739	50 ST



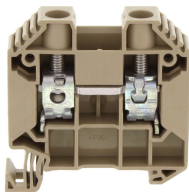
Feed-through terminal, Screw connection, Mounting type: Mounting rail TS 35/7.5, Rated cross-section: 16 mm<sup>2</sup>, Width: 12.1 mm, Colour: Beige

Article number	Article name	GTIN (EAN)	Packaging unit
<u>17125.2</u>	SRK 16/2A/Z BG	4044211181024	50 ST

# Data sheet

## 17247.8 SQI 16/2 YE

##INVERSE##CONTA-CONNECT



Feed-through terminal, Screw connection, Mounting type: Mounting rail TS 35/7.5, Rated cross-section: 16 mm², Width: 12.1 mm, Colour: Beige

Article number	Article name	GTIN (EAN)	Packaging unit
<u>17126.2</u>	SRK 16/2A/IS BG	4044211181031	50