

Data sheet

17224.8 SQI 6/5 YE



Insulated cross-connector, No. of poles: 5, Mounting type: Plug in, Width: 38.6 mm, Rated cross-section: 6 mm², Colour: Yellow

RAL: 1026

Business data

| | |
|--|---------------------------|
| Article number | 17224.8 |
| Article name | SQI 6/5 YE |
| GTIN (EAN) | 4044211148775 |
| Packaging unit | 20 |
| Quantity unit | PC |
| Weight per piece (not including packaging) | 6 g |
| Weight per piece (including packaging) | 6.1 g |
| Unit of weight | G |
| Customs number | 85389099 |
| Country of origin | DE |
| Prio-Article | 17224.8 |
| Product description | Insulated cross-connector |

Technical data

Dimensions

| | |
|------------|---------|
| Length | 4 mm |
| Width | 38.6 mm |
| Height | 23 mm |
| Pitch size | 8 mm |

Ratings

| | |
|---------------------------------|-------------------|
| Voltage with partition, max. | 1000 V |
| Voltage without partition, max. | 1000 V |
| Rated current | 41 A |
| Current load, max. | 41 A |
| Rated cross-section | 6 mm ² |
| Contamination degree | 2 |

Connection data

| | |
|--------------|---|
| No. of poles | 5 |
|--------------|---|

Materials

| | |
|---------------------------|---------------|
| Material | Copper alloy |
| Insulation housing | Polyamide 6.6 |
| Flammability class UL 94 | V-2 |
| Working temperature, min. | -40 °C |
| Working temperature, max. | 105 °C |

Further technical data

| | |
|-------------------------------|---------|
| Mounting type | Plug in |
| Insulation available | ✓ |
| Touch protection is available | ✓ |
| Number of bridged terminals | 5 |

Environmental Product Compliance

| | |
|--------------------------------|----|
| REACH Candidate Substance Note | No |
|--------------------------------|----|

Media

Accessories

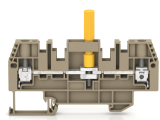
Insulation cap for cross-connector



Insulating cap, Colour: Yellow

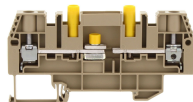
| Article number | Article name | GTIN (EAN) | Packaging unit |
|----------------|----------------|---------------|----------------|
| <u>17200.8</u> | SQIK 2,5-10 YE | 4044211148539 | 20 |

##INVERSE##CONTA-CONNECT



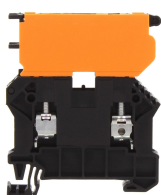
Test disconnect terminal, Screw connection, Mounting type: Mounting rail TS 35/7.5,
Rated cross-section: 6 mm², Width: 8.1 mm, Colour: Beige

| Article number | Article name | GTIN (EAN) | Packaging unit |
|----------------|-----------------|---------------|----------------|
| <u>17523.2</u> | SPTK 6/LT/HB BG | 4044211209223 | 50 ST |



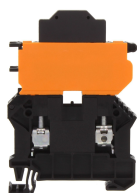
Test disconnect terminal, Screw connection, Mounting type: Mounting rail TS 35/7.5,
Rated cross-section: 6 mm², Width: 8.1 mm, Colour: Beige

| Article number | Article name | GTIN (EAN) | Packaging unit |
|----------------|----------------------|---------------|----------------|
| <u>17524.2</u> | SPTK 6/LT/STBI/YE BG | 4044211209919 | 50 ST |



Fuse-disconnect terminal, Screw connection, Mounting type: Mounting rail TS 35/7.5,
Rated cross-section: 6 mm², Width: 8.1 mm, Colour: Black

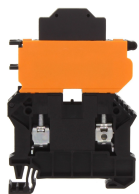
| Article number | Article name | GTIN (EAN) | Packaging unit |
|----------------|--------------|---------------|----------------|
| <u>17151.4</u> | SSIK 6/2A BK | 4044211188993 | 50 ST |



Fuse-disconnect terminal, Screw connection, Mounting type: Mounting rail TS 35/7.5,
Rated cross-section: 6 mm², Width: 8.1 mm, Colour: Black

| Article number | Article name | GTIN (EAN) | Packaging unit |
|----------------|-------------------------------|---------------|----------------|
| <u>17176.4</u> | SSIK 6/2A/LED 30-60V AC/DC BK | 4044211188931 | 50 ST |

##INVERSE##CONTA-CONNECT



Fuse-disconnect terminal, Screw connection, Mounting type: Mounting rail TS 35/7.5,
Rated cross-section: 6 mm², Width: 8.1 mm, Colour: Black

| Article number | Article name | GTIN (EAN) | Packaging unit |
|----------------|-----------------------------|---------------|----------------|
| <u>17178.4</u> | SSIK 6/2A/LED 500V AC/DC BK | 4044211188948 | 50 ST |



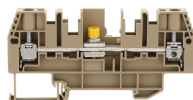
Test disconnect terminal, Screw connection, Mounting type: Mounting rail TS 35/7.5,
Rated cross-section: 6 mm², Width: 8.1 mm, Colour: Beige

| Article number | Article name | GTIN (EAN) | Packaging unit |
|----------------|--------------|---------------|----------------|
| <u>17520.2</u> | SPTK 6/DU BG | 4044211209650 | 50 ST |



Test disconnect terminal, Screw connection, Mounting type: Mounting rail TS 35/7.5,
Rated cross-section: 6 mm², Width: 8.1 mm, Colour: Beige

| Article number | Article name | GTIN (EAN) | Packaging unit |
|----------------|--------------|---------------|----------------|
| <u>17521.2</u> | SPTK 6/LT BG | 4044211209162 | 50 ST |



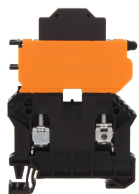
Test disconnect terminal, Screw connection, Mounting type: Mounting rail TS 35/7.5,
Rated cross-section: 6 mm², Width: 8.1 mm, Colour: Beige

| Article number | Article name | GTIN (EAN) | Packaging unit |
|----------------|--------------|---------------|----------------|
| <u>17522.2</u> | SPTK 6/QT BG | 4044211209216 | 50 ST |



Test disconnect terminal, Screw connection, Mounting type: Mounting rail TS 35/7.5,
Rated cross-section: 6 mm², Width: 8.1 mm, Colour: Beige

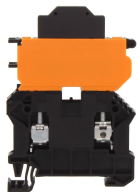
| Article number | Article name | GTIN (EAN) | Packaging unit |
|----------------|----------------------|---------------|----------------|
| <u>17525.2</u> | SPTK 6/LT/STBI/BU BG | 4044211209926 | 50 ST |



Fuse-disconnect terminal, Screw connection, Mounting type: Mounting rail TS 35/7.5,
Rated cross-section: 6 mm², Width: 8.1 mm, Colour: Black

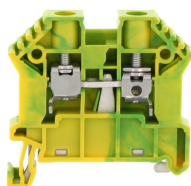
| Article number | Article name | GTIN (EAN) | Packaging unit |
|----------------|-------------------------------|---------------|----------------|
| <u>17175.4</u> | SSIK 6/2A/LED 12-30V AC/DC BK | 4044211188924 | 50 ST |

##INVERSE##CONTA-CONNECT



Fuse-disconnect terminal, Screw connection, Mounting type: Mounting rail TS 35/7.5, Rated cross-section: 6 mm², Width: 8.1 mm, Colour: Black

| Article number | Article name | GTIN (EAN) | Packaging unit |
|----------------|---------------------------------|---------------|----------------|
| <u>17177.4</u> | SSIK 6/2A/LED 110-250V AC/DC BK | 4044211188955 | 50 ST |



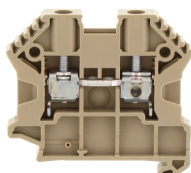
Protective earth terminal, Screw connection, Mounting type: Mounting rail TS 35/7.5, Rated cross-section: 10 mm², Width: 8 mm, Colour: Green-yellow

| Article number | Article name | GTIN (EAN) | Packaging unit |
|----------------|---------------|---------------|----------------|
| <u>17111.2</u> | SSL 6/2A GNYE | 4044211141769 | 100 ST |



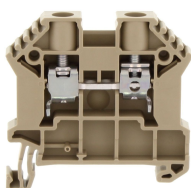
Feed-through terminal, Screw connection, Mounting type: Mounting rail TS 35/7.5, Rated cross-section: 10 mm², Width: 8 mm, Colour: Black-yellow

| Article number | Article name | GTIN (EAN) | Packaging unit |
|----------------|------------------|---------------|----------------|
| <u>17132.2</u> | SRK 6/2A/PE BKYE | 4044211200718 | 100 ST |



Feed-through terminal, Screw connection, Mounting type: Mounting rail TS 35/7.5, Rated cross-section: 10 mm², Width: 8 mm, Colour: Beige

| Article number | Article name | GTIN (EAN) | Packaging unit |
|----------------|---------------|---------------|----------------|
| <u>17109.2</u> | SRK B 6/2A BG | 4044211141745 | 100 ST |



Feed-through terminal, Screw connection, Mounting type: Mounting rail TS 35/7.5, Rated cross-section: 10 mm², Width: 8 mm, Colour: Beige

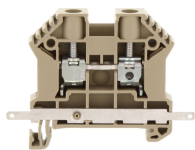
| Article number | Article name | GTIN (EAN) | Packaging unit |
|----------------|--------------|---------------|----------------|
| <u>17108.2</u> | SRK 6/2A BG | 4044211141738 | 100 |



Feed-through terminal, Screw connection, Mounting type: Mounting rail TS 35/7.5, Rated cross-section: 10 mm², Width: 8 mm, Colour: Beige

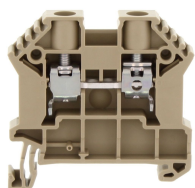
| Article number | Article name | GTIN (EAN) | Packaging unit |
|----------------|---------------|---------------|----------------|
| <u>17110.2</u> | SRK 6/2A/Z BG | 4044211141752 | 100 ST |

##INVERSE##CONTA-CONNECT



Feed-through terminal, Screw connection, Mounting type: Mounting rail TS 35/7.5, Rated cross-section: 10 mm², Width: 8 mm, Colour: Beige

| Article number | Article name | GTIN (EAN) | Packaging unit |
|----------------|-----------------|---------------|----------------|
| <u>17117.2</u> | SRK 6/2A SAS BG | 4044211149000 | 80 |



Feed-through terminal, Screw connection, Mounting type: Mounting rail TS 35/7.5, Rated cross-section: 10 mm², Width: 8 mm, Colour: Beige

| Article number | Article name | GTIN (EAN) | Packaging unit |
|----------------|----------------|---------------|----------------|
| <u>87805.2</u> | SRK 6/2A Ex BG | 4044211199777 | 100 |

##INVERSE##CONTA-CONNECT



Test disconnect terminal, Screw connection, Mounting type: Mounting rail TS 35/7.5, Rated cross-section: 6 mm², Width: 8.1 mm, Colour: Beige

| Article number | Article name | GTIN (EAN) | Packaging unit |
|----------------|--------------|---------------|----------------|
| <u>17521.2</u> | SPTK 6/LT BG | 4044211209162 | 50 ST |