

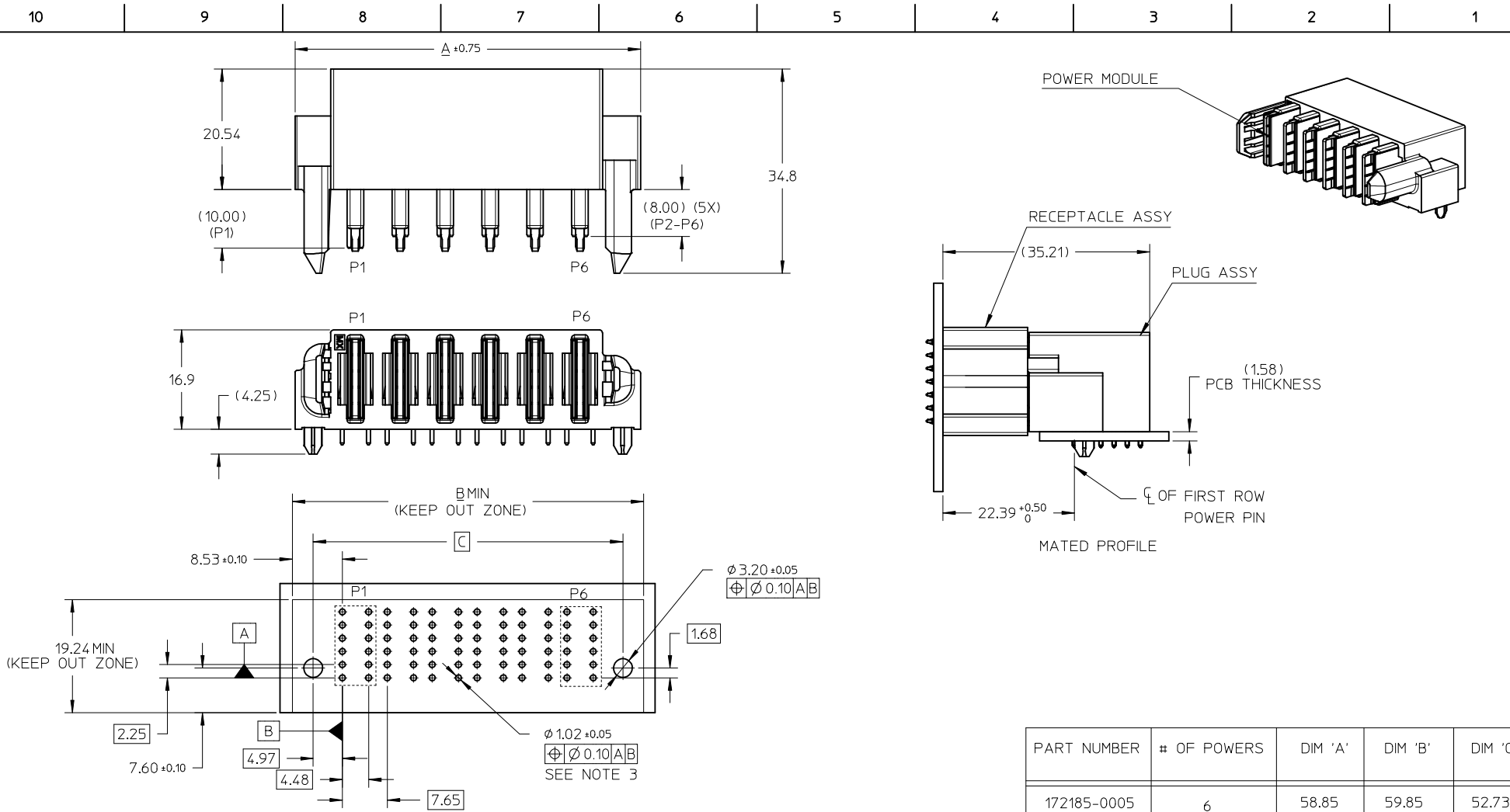
PART NUMBER	# OF POWERS	DIM 'A'	DIM 'B'	DIM 'C'
172185-0005	6	58.85	59.85	52.73
172185-0006	4	43.55	44.55	37.43
172185-0007	2	28.25	29.25	22.13

- NOTES:
- MATERIAL:
 - HOUSINGS: LCP UL94, V-0, COLOR : BLACK
 - TERMINALS: HIGH CONDUCTIVITY COPPER ALLOY
 - PLATING: 1.27µM (50µ") NICKEL OVERALL WITH 2.54µM (100µ") SELECTIVE TIN ON TAILS AND 0.762µM (30µ") SELECTIVE GOLD ON CONTACT AREA
 - PACKAGING SPECIFICATION: PK-172185-0004
 - PLATED THRU HOLE SIZE, REFER TO PS-172185-0001 FOR DETAILS
 - PRODUCT SPEC: PS-172185-0001
 - PRODUCT TO MEET ROHS REQUIREMENTS
 - FOR MATEING PARTS SEE MOLEX RECEPTACLE SD-172186-0005
 - TAIL DESIGN: SOLDER TAIL
 - CONTACTS ARE LUBRICATED

UPDATE PK SPEC
 EC NO: S2018-0069
 DRWN:CGOH 2017/08/03
 CHKD:EAH 2017/08/18
 APPR:KILIM 2017/08/18

QUALITY SYMBOLS	GENERAL TOLERANCES (UNLESS SPECIFIED)	
	mm	INCH
$\nabla_A = 0$	4 PLACES ± ---	± ---
$\nabla_B = 0$	3 PLACES ± ---	± ---
$\nabla_C = 0$	2 PLACES ± 0.25	± ---
	1 PLACE ± 0.25	± ---
	0 PLACE ± ---	± ---
	ANGULAR ± 3 °	
	DRAFT WHERE APPLICABLE MUST REMAIN WITHIN DIMENSIONS	

DIMENSION STYLE		SCALE	DESIGN UNITS
MM ONLY		NTS	METRIC
DRAWN BY	DATE	TITLE	
CGOH	2014/12/05	MODULAR ENERGETIC POWER RIGHT ANGLE PLUG POWER MODULE WITH GUIDE	
CHECKED BY	DATE	molex	
CGOH	2014/12/05		
APPROVED BY	DATE	DOCUMENT NO. SD-172185-0005	
KHLIM	2017/08/18	SHEET NO. 1 OF 1	
MATERIAL NO.	THIS DRAWING CONTAINS INFORMATION THAT IS PROPRIETARY TO MOLEX INCORPORATED AND SHOULD NOT BE USED WITHOUT WRITTEN PERMISSION		
SIZE A3			



PART NUMBER	# OF POWERS	DIM 'A'	DIM 'B'	DIM 'C'
172185-0005	6	58.85	59.85	52.73
172185-0006	4	43.55	44.55	37.43
172185-0007	2	28.25	29.25	22.13

- NOTES:
- MATERIAL:
 - HOUSINGS: LCP UL94, V-0, COLOR : BLACK
 - TERMINALS: HIGH CONDUCTIVITY COPPER ALLOY
 - PLATING: 1.27μM (50μ") NICKEL OVERALL WITH 2.54μM (100μ") SELECTIVE TIN ON TAILS AND 0.762μM (30μ") SELECTIVE GOLD ON CONTACT AREA
 - PACKAGING SPECIFICATION: PK-172185-0004
 - PLATED THRU HOLE SIZE, REFER TO PS-172185-0001 FOR DETAILS
 - PRODUCT SPEC: PS-172185-0001
 - PRODUCT TO MEET RoHS REQUIREMENTS
 - FOR MATEING PARTS SEE MOLEX RECEPTACLE SD-172186-0005
 - TAIL DESIGN: SOLDER TAIL
 - CONTACTS ARE LUBRICATED

UPDATE PK SPEC
 EC NO: S2018-0069
 DRWN:CGOH 2017/08/03
 CHKD:EAH 2017/08/18
 APPR:KILIM 2017/08/18

QUALITY SYMBOLS	GENERAL TOLERANCES (UNLESS SPECIFIED)	
	mm	INCH
$\nabla_A = 0$	4 PLACES ± ---	± ---
$\nabla_C = 0$	3 PLACES ± ---	± ---
$\nabla_B = 0$	2 PLACES ± 0.25	± ---
	1 PLACE ± 0.25	± ---
	0 PLACE ± ---	± ---
	ANGULAR ± 3 °	
	DRAFT WHERE APPLICABLE MUST REMAIN WITHIN DIMENSIONS	

DIMENSION STYLE		SCALE	DESIGN UNITS	THIRD ANGLE PROJECTION
MM ONLY		NTS	METRIC	
DRAWN BY	DATE	TITLE		
CGOH	2014/12/05	MODULAR ENERGETIC POWER RIGHT ANGLE PLUG POWER MODULE WITH GUIDE		
CHECKED BY	DATE	molex		
CGOH	2014/12/05			
APPROVED BY	DATE	DOCUMENT NO. SD-172185-0005		
KHLIM	2017/08/18	SHEET NO. 1 OF 1		
MATERIAL NO.	THIS DRAWING CONTAINS INFORMATION THAT IS PROPRIETARY TO MOLEX INCORPORATED AND SHOULD NOT BE USED WITHOUT WRITTEN PERMISSION			