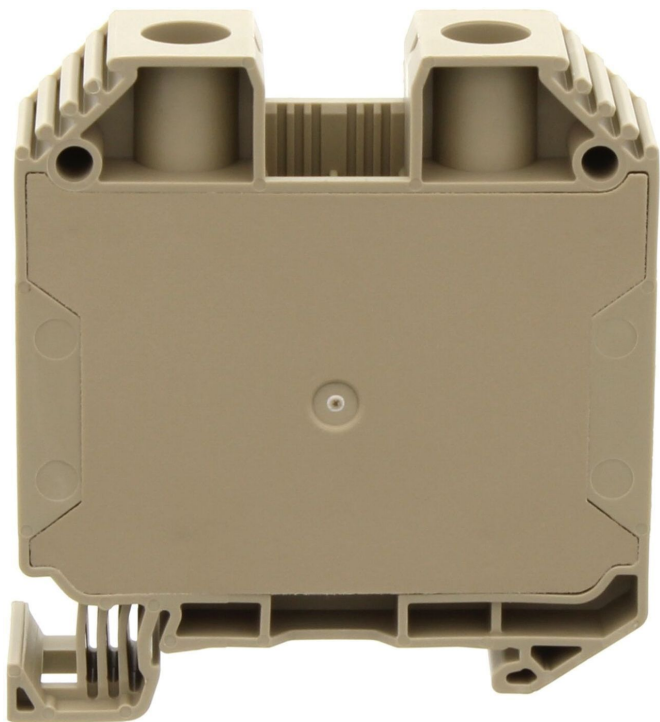


Data sheet

17143.2 SRK 35/2A/Z/IS BG



Feed-through terminal, Screw connection, Mounting type: Mounting rail TS 35/7.5, Rated cross-section: 35 mm², Width: 16.1 mm, Colour: Beige

Business data

Article number	17143.2
Article name	SRK 35/2A/Z/IS BG
GTIN (EAN)	4044211186654
Packaging unit	20
Quantity unit	PC
Weight per piece (not including packaging)	58.2 g
Weight per piece (including packaging)	60.9 g
Unit of weight	G
Customs number	85369010
Country of origin	DE
Product description	Feed-through terminal
Colour	Beige

Technical data

Dimensions

Length	59 mm
Width	16.1 mm
Height TS 35/7.5	65.5 mm

Ratings

Rated voltage	1000 V
Rated current	125 A
Current load, max.	150 A
Rated cross-section	35 mm ²
Rated impulse voltage	8 kV
Overvoltage category	III
Contamination degree	3
Maximum power dissipation for nominal condition	4 W

Technical data

Connection data

Connection principle	Screw connection
Connection position	Lateral
Connections	2
Number of terminals per level	2
Number of levels	1
Wire cross-section single-core (rigid) / stranded, min.	1.5 mm ²
Wire cross-section single core (rigid)/stranded, max.	50 mm ²
Wire cross-section stranded, min.	1.5 mm ²
Wire cross-section stranded, max.	50 mm ²
Wire cross-section stranded with wire-end ferrules,min.	1.5 mm ²
Wire cross-section stranded with wire-end ferrules,max.	35 mm ²
Wire cross-section AWG, min.	16
Wire cross-section AWG, max.	1/0
Stripping length	18 mm
Screw head	Inner hex (Allen)
Screw threading	M 6
Tightening torque, min.	3.2 Nm
Tightening torque, max.	3.7 Nm
Wire cross-section single-core (rigid) / stranded, AWGmax.	1/0
Wire cross-section single-core (rigid) / stranded, AWGmin.	16
Wire cross-section stranded, AWG max.	1/0
Wire cross-section stranded, AWG min.	16
Wire cross-section stranded with wire-end ferrules, AWG max.	2
Wire cross-section stranded with wire-end ferrules, AWG min.	16

Materials

Insulation housing	Polyamide 6.6
Flammability class UL 94	V-0
Working temperature, min.	-40 °C
Working temperature, max.	120 °C

Further technical data

Mounting type	Mounting rail TS 35/7,5
Gauge plug acc. to EN 60 947-1	B9
Number of cross-connection channels	2
Number of test pick-off options	1

Data sheet

17143.2 SRK 35/2A/Z/IS BG



Technical data

Environmental Product Compliance

REACH Conform	yes
REACH Reference date	2023-06-14
REACH Candidate Substance Note	No
RoHS Conform	yes

Approvals

Standards and regulations

EAC approval	TR ZU 004/2011
EAC approval granted	yes

CSA approval

CSA approval	C22.2 No 158
CSA approval granted	yes
CSA Usegroup C: rated voltage	600 V
CSA Usegroup C: rated current	150 A
CSA wire cross-section AWG, min.	16
CSA wire cross-section AWG, max.	1/0
CSA torque, max.	3.7 Nm
CSA torque, min.	3.2 Nm

CSAus approval

CSAus approval	UL 1059
CSAus approval granted	yes
CSAus Usegroup C: rated voltage	600 V
CSAus Usegroup C: rated current	150 A
CSAus wire cross-section AWG, min.	16
CSAus wire cross-section AWG, max.	1/0
CSAus torque, min.	3.2 Nm
CSAus torque, max.	3.7 Nm

KEMA KEUR approval

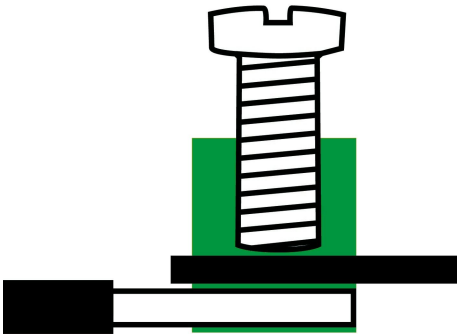
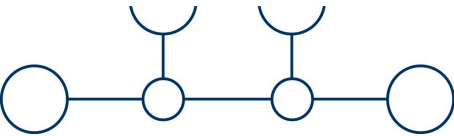
KEMA KEUR approval	EN 60947-7-1:2009
KEMA KEUR approval granted	yes
KEMA rated voltage	1000 V
KEMA rated current	125 A
KEMA rated impulse voltage	8 kV
KEMA wire cross-section single core (rigid), min.	2.5 mm ²
KEMA wire cross-section single-core (rigid), max.	35 mm ²
KEMA wire cross-section stranded, min.	2.5 mm ²
KEMA wire cross-section stranded, max.	35 mm ²
KEMA torque, min.	3.2 Nm
KEMA torque, max.	3.7 Nm

Approvals

UL Recognized

UL approval	UL 1059
UL Usegroup B: rated voltage	600 V
UL Usegroup B: rated current	150 A
UL Usegroup C: rated voltage	600 V
UL Usegroup C: rated current	150 A
UL wire cross-section single-core (rigid) AWG, min.	16
UL wire cross-section single-core (rigid) AWG, max.	1/0
UL wire cross-section stranded AWG, min.	16
UL wire cross-section stranded AWG, max.	1/0
UL torque, min.	28.3 Lb In.
UL torque, max.	32.7 Lb In.
UL wire material	Cu
UL factory wiring	1
UL field wiring	1
UL Recognized	1

Media



Accessories

Cover

Cover, Length: 40.25 mm, Width: 16 mm, Colour: Yellow



Article number	Article name	GTIN (EAN)	Packaging unit
<u>17281.8</u>	SAD 1/16/B YE	4044211199661	20 ST

Cover, Length: 40.25 mm, Width: 16 mm, Colour: White



Article number	Article name	GTIN (EAN)	Packaging unit
<u>17282.7</u>	SAD 1/16/B WH	4044211199654	20 ST

Measurement pick-off terminal

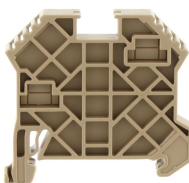
Measurement pick-off terminal, Screw connection, Mounting type: On base, Rated cross-section: 6 mm², Width: 8.3 mm, Colour: Beige



Article number	Article name	GTIN (EAN)	Packaging unit
<u>17148.2</u>	SMAG 35/6 BG	4044211186685	50

End stop

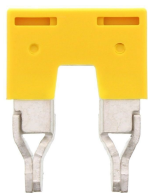
End stop, Mounting type: Mounting rail TS 35/7.5 and TS 35/15, Width: 8 mm, Colour: Beige



Article number	Article name	GTIN (EAN)	Packaging unit
<u>17250.2</u>	SES 35 BG	4044211178253	50

Insulated cross-connector

17143.2 SRK 35/2A/Z/IS BG



Insulated cross-connector, No. of poles: 2, Mounting type: Plug in, Width: 26.5 mm, Rated cross-section: 35 mm², Colour: Yellow

Article number	Article name	GTIN (EAN)	Packaging unit
<u>17252.8</u>	SQI 35/2 YE	4044211186807	20 ST

Quick marking



Terminal marker / Pocket Maxicard, Length: 5 mm, Width: 8 mm, Colour: White

Article number	Article name	GTIN (EAN)	Packaging unit
<u>9323.7</u>	PMC SB 8/40 WH	4044211129231	400 ST

##INVERSE##CONTA-CONNECT



Measurement pick-off terminal, Screw connection, Mounting type: On base, Rated cross-section: 6 mm², Width: 8.3 mm, Colour: Beige

Article number	Article name	GTIN (EAN)	Packaging unit
<u>17148.2</u>	SMAG 35/6 BG	4044211186685	50