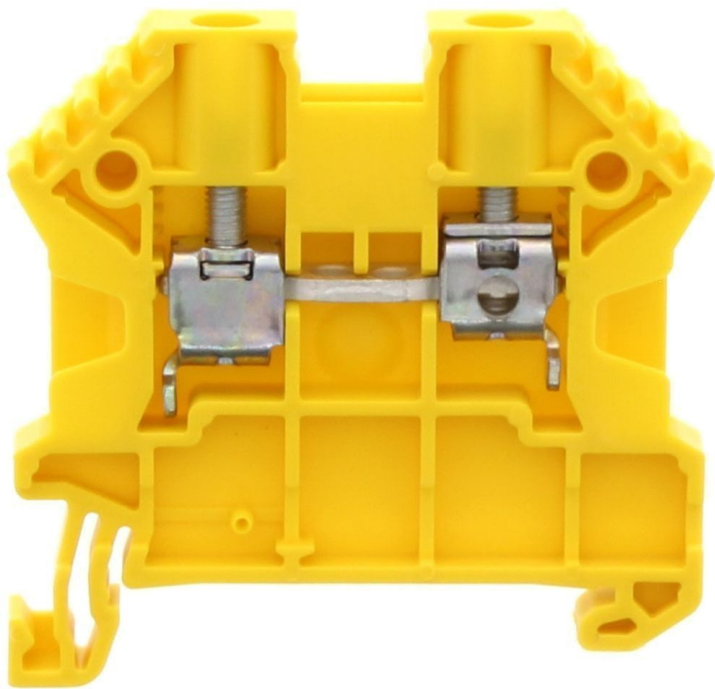


# Data sheet

## 17104.8 SRK 4/2A YE



Feed-through terminal, Screw connection, Mounting type: Mounting rail TS 35/7.5, Rated cross-section: 4 mm², Width: 6 mm, Colour: Yellow

**RAL:** 1026

### Business data

|  |                       |
|--|-----------------------|
| Article number                             | 17104.8               |
| Article name                               | SRK 4/2A YE           |
| GTIN (EAN)                                 | 4044211170264         |
| Explosion-proof version (EEx e)            | yes                   |
| Packaging unit                             | 100                   |
| Quantity unit                              | PC                    |
| Weight per piece (not including packaging) | 8.5 g                 |
| Weight per piece (including packaging)     | 9.08 g                |
| Unit of weight                             | G                     |
| Customs number                             | 85369010              |
| Country of origin                          | DE                    |
| Prio-Article                               | 17104.2               |
| Product description                        | Feed-through terminal |

# Data sheet

## 17104.8 SRK 4/2A YE



### Technical data

#### Dimensions

|                  |       |
|------------------|-------|
| Length           | 48 mm |
| Width            | 6 mm  |
| Height TS 35/7.5 | 47 mm |

#### Ratings

|   |                   |
|---|-------------------|
| Rated voltage                                   | 1000 V            |
| Rated current                                   | 32 A              |
| Current load, max.                              | 41 A              |
| Rated cross-section                             | 4 mm <sup>2</sup> |
| Rated impulse voltage                           | 8 kV              |
| Overvoltage category                            | III               |
| Contamination degree                            | 3                 |
| Maximum power dissipation for nominal condition | 1.02 W            |

### Technical data

#### Connection data

|  |                     |
|--|---------------------|
| Connection principle   | Screw connection    |
| Connection position  | Lateral             |
| Connections  | 2                   |
| Number of terminals per level                                | 2                   |
| Number of levels   | 1                   |
| Wire cross-section single-core (rigid) / stranded, min.      | 0.2 mm <sup>2</sup> |
| Wire cross-section single core (rigid)/stranded, max.        | 6 mm <sup>2</sup>   |
| Wire cross-section stranded, min.                            | 0.2 mm <sup>2</sup> |
| Wire cross-section stranded, max.                            | 6 mm <sup>2</sup>   |
| Wire cross-section stranded with wire-end ferrules,min.      | 0.2 mm <sup>2</sup> |
| Wire cross-section stranded with wire-end ferrules,max.      | 4 mm <sup>2</sup>   |
| Wire cross-section AWG, min.                                 | 26                  |
| Wire cross-section AWG, max.                                 | 10                  |
| Stripping length   | 10 mm               |
| Screw head   | Slotted             |
| Screw threading  | M 3                 |
| Tightening torque, min.                                      | 0.5 Nm              |
| Tightening torque, max.                                      | 1 Nm                |
| Wire cross-section single-core (rigid) / stranded, AWGmax.   | 10                  |
| Wire cross-section single-core (rigid) / stranded, AWGmin.   | 26                  |
| Wire cross-section stranded, AWG max.                        | 10                  |
| Wire cross-section stranded, AWG min.                        | 26                  |
| Wire cross-section stranded with wire-end ferrules, AWG max. | 12                  |
| Wire cross-section stranded with wire-end ferrules, AWG min. | 26                  |

#### Materials

|                           |               |
|---------------------------|---------------|
| Insulation housing        | Polyamide 6.6 |
| Flammability class UL 94  | V-0           |
| Working temperature, min. | -40 °C        |
| Working temperature, max. | 120 °C        |

# Data sheet

## 17104.8 SRK 4/2A YE



### Technical data

#### Further technical data

|                                     |                         |
|-------------------------------------|-------------------------|
| Mounting type                       | Mounting rail TS 35/7,5 |
| Gauge plug acc. to EN 60 947-1      | A4                      |
| Number of cross-connection channels | 2                       |
| End plate required                  | ✓                       |
| Number of test pick-off options     | 1                       |

#### Environmental Product Compliance

|                                |    |
|--------------------------------|----|
| REACH Candidate Substance Note | No |
|--------------------------------|----|

### Approvals

#### Standards and regulations

|                            |                    |
|----------------------------|--------------------|
| ATEX certification number  | DEKRA 12ATEX0039 U |
| EAC approval               | TR ZU 004/2011     |
| EAC approval granted       | yes                |
| IECEX certification number | IECEX DEK 12.0006U |

#### CSA approval

|                                  |              |
|----------------------------------|--------------|
| CSA approval                     | C22.2 No 158 |
| CSA approval granted             | yes          |
| CSA Usegroup C: rated voltage    | 600 V        |
| CSA Usegroup C: rated current    | 35 A         |
| CSA wire cross-section AWG, min. | 26           |
| CSA wire cross-section AWG, max. | 10           |
| CSA torque, max.                 | 1 Nm         |
| CSA torque, min.                 | 0.5 Nm       |

#### CSAus approval

|                                    |         |
|------------------------------------|---------|
| CSAus approval                     | UL 1059 |
| CSAus approval granted             | yes     |
| CSAus Usegroup C: rated voltage    | 600 V   |
| CSAus Usegroup C: rated current    | 35 A    |
| CSAus wire cross-section AWG, min. | 26      |
| CSAus wire cross-section AWG, max. | 10      |
| CSAus torque, min.                 | 0.5 Nm  |
| CSAus torque, max.                 | 1 Nm    |

### Approvals

#### cUL Recognized

|  |              |
|--|--------------|
| cUL approval   | C22.2 No 158 |
| cUL Usegroup B: rated voltage                        | 600 V        |
| cUL Usegroup B: rated current                        | 35 A         |
| cUL Usegroup C: rated voltage                        | 600 V        |
| cUL Usegroup C: rated current                        | 35 A         |
| cUL wire cross-section single-core (rigid) AWG, min. | 26           |
| cUL wire cross-section single-core (rigid) AWG, max. | 10           |
| cUL wire cross-section stranded AWG, min.            | 26           |
| cUL wire cross-section stranded AWG, max.            | 10           |
| cUL torque, min.                                     | 0.5 Nm       |
| cUL torque, max.                                     | 1 Nm         |
| cUL wire material                                    | Cu           |
| cUL Recognized                                       | 1            |

#### KEMA KEUR approval

|   |                     |
|---|---------------------|
| KEMA KEUR approval                                | EN 60947-7-1:2009   |
| KEMA KEUR approval granted                        | yes                 |
| KEMA rated voltage                                | 1000 V              |
| KEMA rated current                                | 41 A                |
| KEMA rated impulse voltage                        | 8 kV                |
| KEMA wire cross-section single core (rigid), min. | 0.5 mm <sup>2</sup> |
| KEMA wire cross-section single-core (rigid), max. | 6 mm <sup>2</sup>   |
| KEMA wire cross-section stranded, min.            | 0.5 mm <sup>2</sup> |
| KEMA wire cross-section stranded, max.            | 6 mm <sup>2</sup>   |
| KEMA torque, min.                                 | 0.5 Nm              |
| KEMA torque, max.                                 | 1 Nm                |

### Approvals

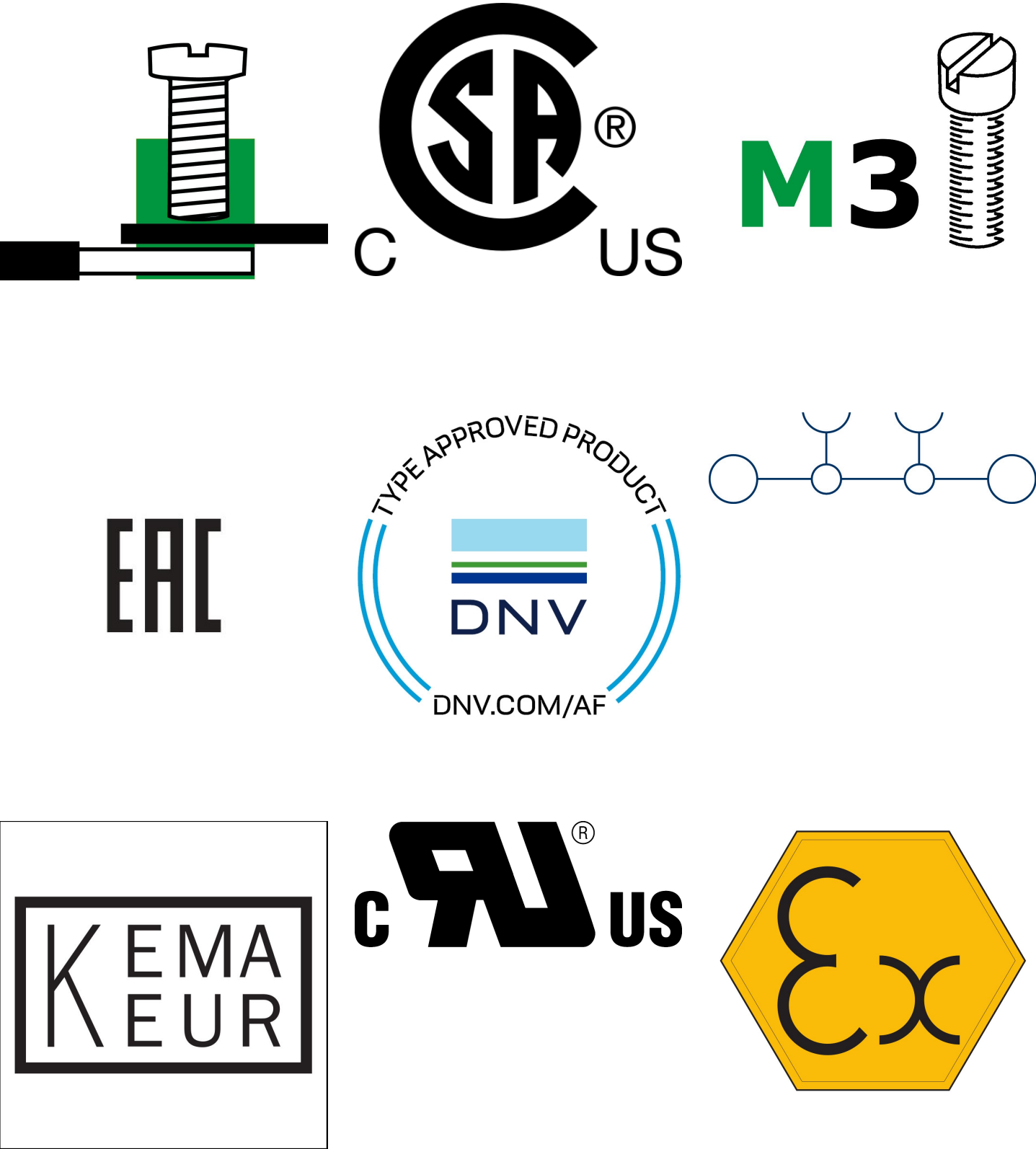
#### UL Recognized

|   |            |
|---|------------|
| UL approval   | UL 1059    |
| UL Usegroup B: rated voltage                        | 600 V      |
| UL Usegroup B: rated current                        | 35 A       |
| UL Usegroup C: rated voltage                        | 600 V      |
| UL Usegroup C: rated current                        | 35 A       |
| UL wire cross-section single-core (rigid) AWG, min. | 26         |
| UL wire cross-section single-core (rigid) AWG, max. | 10         |
| UL wire cross-section stranded AWG, min.            | 26         |
| UL wire cross-section stranded AWG, max.            | 10         |
| UL torque, min.                                     | 4.4 Lb In. |
| UL torque, max.                                     | 8.8 Lb In. |
| UL wire material                                    | Cu         |
| UL factory wiring                                   | 1          |
| UL field wiring                                     | 1          |
| UL Recognized                                       | 1          |

#### German Lloyd approval

|                              |   |
|------------------------------|---|
| DNV GL Certificate number    | TAE00002JG                                |
| DNV GL Location Classes      | Temperature: B, Humidity: B, Vibration: A |
| DNV GL approval granted      | 1   |
| DNV GL rated cross-section   | 4 mm <sup>2</sup>                         |
| DNV GL rated current         | 41 A                                      |
| DNV GL rated impulse voltage | 8 kV                                      |
| DNV GL rated voltage         | 1000 V                                    |
| DNV GL test standard         | IEC 60947-7-1:2009                        |

Media





### Accessories

#### Cover

Cover, Width: 6 mm, Colour: Yellow



| Article number | Article name | GTIN (EAN)    | Packaging unit |
|----------------|--------------|---------------|----------------|
| <u>17296.8</u> | SAD 1/6/B YE | 4044211205447 | 50 ST          |

#### Measurement pick-off terminal

Measurement pick-off terminal, Screw connection, Mounting type: On base, Rated cross-section: 2.5 mm<sup>2</sup>, Width: 5.9 mm, Colour: Beige



| Article number | Article name  | GTIN (EAN)    | Packaging unit |
|----------------|---------------|---------------|----------------|
| <u>17120.2</u> | SMAG 4/2,5 BG | 4044211172107 | 10 ST          |

#### End plate

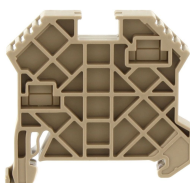
End plate, Width: 1.5 mm, Colour: Beige



| Article number | Article name | GTIN (EAN)    | Packaging unit |
|----------------|--------------|---------------|----------------|
| <u>2001.2</u>  | AP 2,5-10 BG | 4044211047979 | 50             |

#### End stop

End stop, Mounting type: Mounting rail TS 35/7.5 and TS 35/15, Width: 8 mm, Colour: Beige



| Article number | Article name | GTIN (EAN)    | Packaging unit |
|----------------|--------------|---------------|----------------|
| <u>17250.2</u> | SES 35 BG    | 4044211178253 | 50             |

#### Insulation cap for cross-connector



Insulating cap, Colour: Yellow

| Article number | Article name   | GTIN (EAN)    | Packaging unit |
|----------------|----------------|---------------|----------------|
| <u>17200.8</u> | SQIK 2,5-10 YE | 4044211148539 | 20             |

### Insulated cross-connector



Insulated cross-connector, No. of poles: 3, Mounting type: Plug in, Width: 17.4 mm, Rated cross-section: 4 mm<sup>2</sup>, Colour: Yellow

| Article number | Article name | GTIN (EAN)    | Packaging unit |
|----------------|--------------|---------------|----------------|
| <u>17212.8</u> | SQI 4/3 YE   | 4044211148652 | 50             |



Insulated cross-connector, No. of poles: 2, Mounting type: Plug in, Width: 11.3 mm, Rated cross-section: 4 mm<sup>2</sup>, Colour: Yellow

| Article number | Article name | GTIN (EAN)    | Packaging unit |
|----------------|--------------|---------------|----------------|
| <u>17211.8</u> | SQI 4/2 YE   | 4044211148645 | 50             |



Insulated cross-connector, No. of poles: 8, Mounting type: Plug in, Width: 47.9 mm, Rated cross-section: 4 mm<sup>2</sup>, Colour: Yellow

| Article number | Article name | GTIN (EAN)    | Packaging unit |
|----------------|--------------|---------------|----------------|
| <u>17217.8</u> | SQI 4/8 YE   | 4044211148706 | 10             |



Insulated cross-connector, No. of poles: 9, Mounting type: Plug in, Width: 54 mm, Rated cross-section: 4 mm<sup>2</sup>, Colour: Yellow

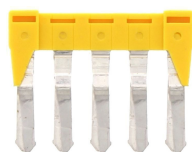
| Article number | Article name | GTIN (EAN)    | Packaging unit |
|----------------|--------------|---------------|----------------|
| <u>17218.8</u> | SQI 4/9 YE   | 4044211148713 | 10             |



Insulated cross-connector, No. of poles: 10, Mounting type: Plug in, Width: 60.1 mm, Rated cross-section: 4 mm<sup>2</sup>, Colour: Yellow

| Article number | Article name | GTIN (EAN)    | Packaging unit |
|----------------|--------------|---------------|----------------|
| <u>17219.8</u> | SQI 4/10 YE  | 4044211148720 | 10             |

### Insulated cross-connector



Insulated cross-connector, No. of poles: 5, Mounting type: Plug in, Width: 29.6 mm, Rated cross-section: 4 mm<sup>2</sup>, Colour: Yellow

| Article number | Article name | GTIN (EAN)    | Packaging unit |
|----------------|--------------|---------------|----------------|
| <u>17214.8</u> | SQI 4/5 YE   | 4044211148676 | 20             |



Insulated cross-connector, No. of poles: 6, Mounting type: Plug in, Width: 35.7 mm, Rated cross-section: 4 mm<sup>2</sup>, Colour: Yellow

| Article number | Article name | GTIN (EAN)    | Packaging unit |
|----------------|--------------|---------------|----------------|
| <u>17215.8</u> | SQI 4/6 YE   | 4044211148683 | 20             |



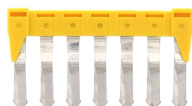
Insulated cross-connector, No. of poles: 4, Mounting type: Plug in, Width: 23.5 mm, Rated cross-section: 4 mm<sup>2</sup>, Colour: Yellow

| Article number | Article name | GTIN (EAN)    | Packaging unit |
|----------------|--------------|---------------|----------------|
| <u>17213.8</u> | SQI 4/4 YE   | 4044211148669 | 20             |



Insulated cross-connector, No. of poles: 30, Mounting type: Plug in, Width: 181.1 mm, Rated cross-section: 4 mm<sup>2</sup>, Colour: Yellow

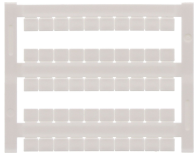
| Article number | Article name | GTIN (EAN)    | Packaging unit |
|----------------|--------------|---------------|----------------|
| <u>17220.8</u> | SQI 4/30 YE  | 4044211148737 | 5              |



Insulated cross-connector, No. of poles: 7, Mounting type: Plug in, Width: 41.8 mm, Rated cross-section: 4 mm<sup>2</sup>, Colour: Yellow

| Article number | Article name | GTIN (EAN)    | Packaging unit |
|----------------|--------------|---------------|----------------|
| <u>17216.8</u> | SQI 4/7 YE   | 4044211148690 | 20             |

### Quick marking



Terminal marker / Pocket Maxicard, Length: 5 mm, Width: 6 mm, Colour: White

| Article number | Article name   | GTIN (EAN)    | Packaging unit |
|----------------|----------------|---------------|----------------|
| <u>4702.7</u>  | PMC SB 6/50 WH | 4044211089986 | 500 ST         |

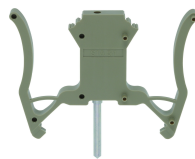
### Screwdriver



Screwdriver with bare blade, Colour: Black-grey

| Article number | Article name | GTIN (EAN)    | Packaging unit |
|----------------|--------------|---------------|----------------|
| <u>1086.0</u>  | SDB 0,6x3,5  | 4044211014797 | 1 ST           |

### Test adapters



Test adapter, Length: 70 mm, Pitch size: 5 mm, Colour: Beige

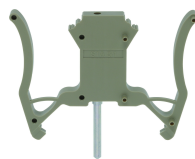
| Article number | Article name | GTIN (EAN)    | Packaging unit |
|----------------|--------------|---------------|----------------|
| <u>17260.2</u> | STA 5/1 BG   | 4044211171599 | 10 ST          |



Test adapter, Length: 70 mm, Pitch size: 1 mm, Colour: Beige

| Article number | Article name | GTIN (EAN)    | Packaging unit |
|----------------|--------------|---------------|----------------|
| <u>17261.2</u> | STA ZP1 BG   | 4044211171605 | 10 ST          |

### ##INVERSE##CONTA-CONNECT



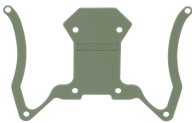
Test adapter, Length: 70 mm, Pitch size: 5 mm, Colour: Beige

| Article number | Article name | GTIN (EAN)    | Packaging unit |
|----------------|--------------|---------------|----------------|
| <u>17260.2</u> | STA 5/1 BG   | 4044211171599 | 10 ST          |

# Data sheet

## 17104.8 SRK 4/2A YE

##INVERSE##CONTA-CONNECT



Test adapter, Length: 70 mm, Pitch size: 1 mm, Colour: Beige

| Article number | Article name | GTIN (EAN)    | Packaging unit |
|----------------|--------------|---------------|----------------|
| <u>17261.2</u> | STA ZP1 BG   | 4044211171605 | 10 ST          |



Measurement pick-off terminal, Screw connection, Mounting type: On base, Rated cross-section: 2.5 mm², Width: 5.9 mm, Colour: Beige

| Article number | Article name  | GTIN (EAN)    | Packaging unit |
|----------------|---------------|---------------|----------------|
| <u>17120.2</u> | SMAG 4/2,5 BG | 4044211172107 | 10 ST          |