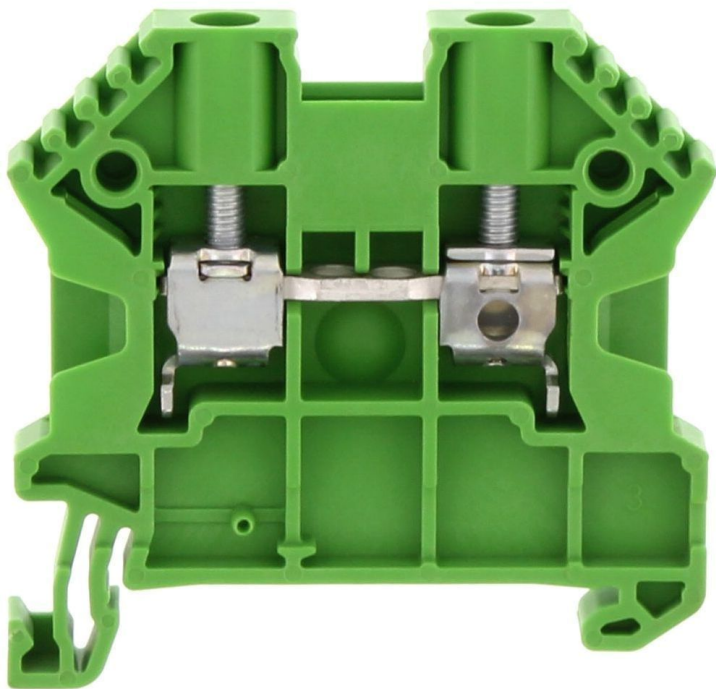


# Data sheet

## 17104.1 SRK 4/2A GN



Feed-through terminal, Screw connection, Mounting type: Mounting rail TS 35/7.5, Rated cross-section: 4 mm², Width: 6 mm, Colour: Green

### Business data

Article number	17104.1
Article name	SRK 4/2A GN
GTIN (EAN)	4044211170141
Explosion-proof version (EEx e)	yes
Packaging unit	100
Quantity unit	PC
Weight per piece (not including packaging)	8.5 g
Weight per piece (including packaging)	9.08 g
Unit of weight	G
Customs number	85369010
Country of origin	DE
Prio-Article	17104.2
Product description	Feed-through terminal

# Data sheet

## 17104.1 SRK 4/2A GN



### Technical data

#### Dimensions

Length	48 mm
Width	6 mm
Height TS 35/7.5	47 mm

#### Ratings

Rated voltage	1000 V
Rated current	32 A
Current load, max.	41 A
Rated cross-section	4 mm <sup>2</sup>
Rated impulse voltage	8 kV
Overvoltage category	III
Contamination degree	3
Maximum power dissipation for nominal condition	1.02 W

### Technical data

#### Connection data

Connection principle	Screw connection
Connection position	Lateral
Connections	2
Number of terminals per level	2
Number of levels	1
Wire cross-section single-core (rigid) / stranded, min.	0.2 mm <sup>2</sup>
Wire cross-section single core (rigid)/stranded, max.	6 mm <sup>2</sup>
Wire cross-section stranded, min.	0.2 mm <sup>2</sup>
Wire cross-section stranded, max.	6 mm <sup>2</sup>
Wire cross-section stranded with wire-end ferrules,min.	0.2 mm <sup>2</sup>
Wire cross-section stranded with wire-end ferrules,max.	4 mm <sup>2</sup>
Wire cross-section AWG, min.	26
Wire cross-section AWG, max.	10
Stripping length	10 mm
Screw head	Slotted
Screw threading	M 3
Tightening torque, min.	0.5 Nm
Tightening torque, max.	1 Nm
Wire cross-section single-core (rigid) / stranded, AWGmax.	10
Wire cross-section single-core (rigid) / stranded, AWGmin.	26
Wire cross-section stranded, AWG max.	10
Wire cross-section stranded, AWG min.	26
Wire cross-section stranded with wire-end ferrules, AWG max.	12
Wire cross-section stranded with wire-end ferrules, AWG min.	26

#### Materials

Insulation housing	Polyamide 6.6
Flammability class UL 94	V-0
Working temperature, min.	-40 °C
Working temperature, max.	120 °C

# Data sheet

## 17104.1 SRK 4/2A GN



### Technical data

#### Further technical data

Mounting type	Mounting rail TS 35/7,5
Gauge plug acc. to EN 60 947-1	A4
Number of cross-connection channels	2
End plate required	✓
Number of test pick-off options	1

#### Environmental Product Compliance

REACH Conform	Yes
REACH Reference date	2023-06-14
REACH Candidate Substance Note	No
RoHS Conform	Yes

### Approvals

#### Standards and regulations

ATEX certification number	DEKRA 12ATEX0039 U
EAC approval	TR ZU 004/2011
EAC approval granted	yes
IECEX certification number	IECEX DEK 12.0006U

#### CSA approval

CSA approval	C22.2 No 158
CSA approval granted	yes
CSA Usegroup C: rated voltage	600 V
CSA Usegroup C: rated current	35 A
CSA wire cross-section AWG, min.	26
CSA wire cross-section AWG, max.	10
CSA torque, max.	1 Nm
CSA torque, min.	0.5 Nm

#### CSAus approval

CSAus approval	UL 1059
CSAus approval granted	yes
CSAus Usegroup C: rated voltage	600 V
CSAus Usegroup C: rated current	35 A
CSAus wire cross-section AWG, min.	26
CSAus wire cross-section AWG, max.	10
CSAus torque, min.	0.5 Nm
CSAus torque, max.	1 Nm

### Approvals

#### cUL Recognized

cUL approval	C22.2 No 158
cUL Usegroup B: rated voltage	600 V
cUL Usegroup B: rated current	35 A
cUL Usegroup C: rated voltage	600 V
cUL Usegroup C: rated current	35 A
cUL wire cross-section single-core (rigid) AWG, min.	26
cUL wire cross-section single-core (rigid) AWG, max.	10
cUL wire cross-section stranded AWG, min.	26
cUL wire cross-section stranded AWG, max.	10
cUL torque, min.	0.5 Nm
cUL torque, max.	1 Nm
cUL wire material	Cu
cUL Recognized	1

#### KEMA KEUR approval

KEMA KEUR approval	EN 60947-7-1:2009
KEMA KEUR approval granted	yes
KEMA rated voltage	1000 V
KEMA rated current	41 A
KEMA rated impulse voltage	8 kV
KEMA wire cross-section single core (rigid), min.	0.5 mm <sup>2</sup>
KEMA wire cross-section single-core (rigid), max.	6 mm <sup>2</sup>
KEMA wire cross-section stranded, min.	0.5 mm <sup>2</sup>
KEMA wire cross-section stranded, max.	6 mm <sup>2</sup>
KEMA torque, min.	0.5 Nm
KEMA torque, max.	1 Nm

### Approvals

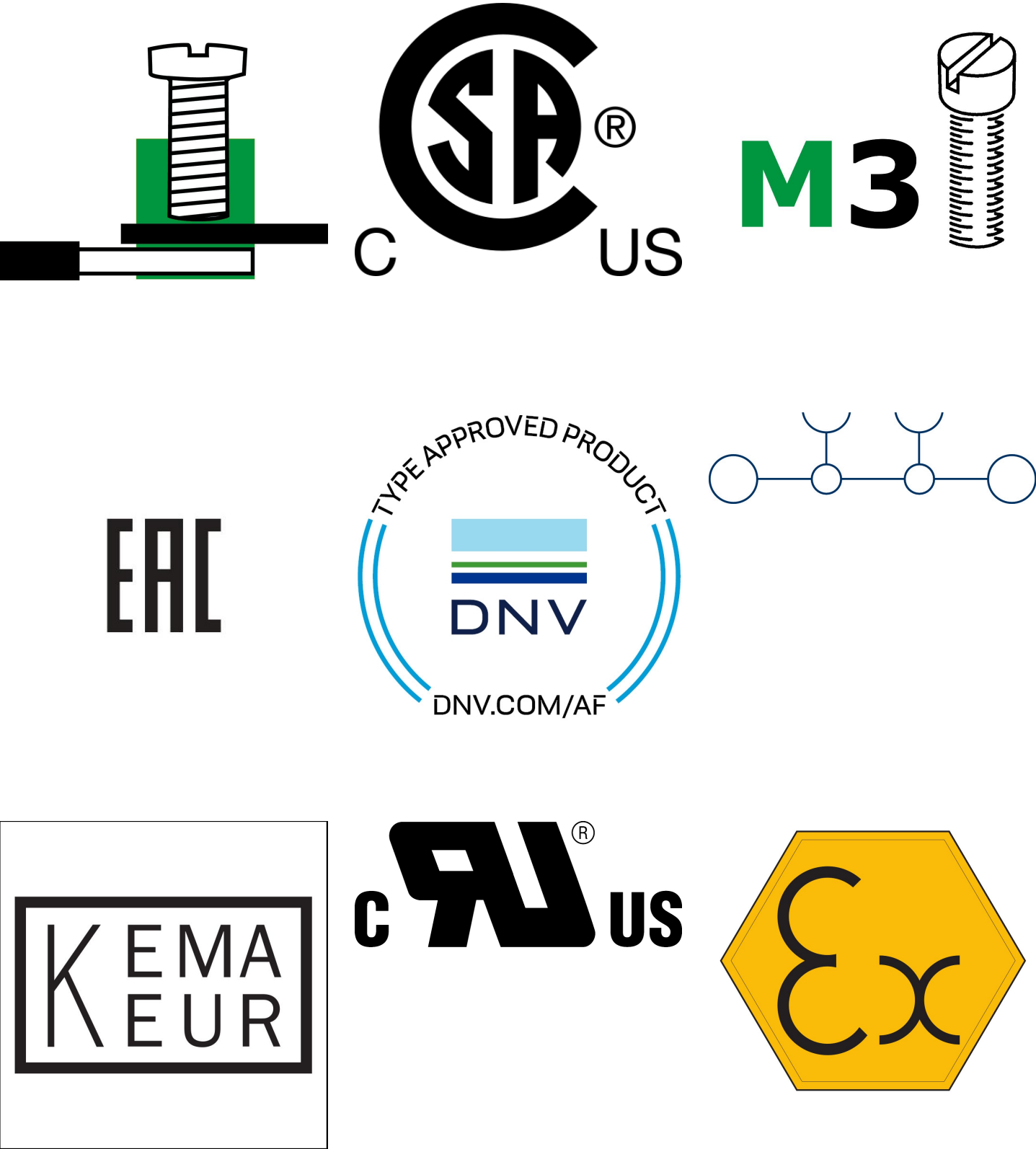
#### UL Recognized

UL approval	UL 1059
UL Usegroup B: rated voltage	600 V
UL Usegroup B: rated current	35 A
UL Usegroup C: rated voltage	600 V
UL Usegroup C: rated current	35 A
UL wire cross-section single-core (rigid) AWG, min.	26
UL wire cross-section single-core (rigid) AWG, max.	10
UL wire cross-section stranded AWG, min.	26
UL wire cross-section stranded AWG, max.	10
UL torque, min.	4.4 Lb In.
UL torque, max.	8.8 Lb In.
UL wire material	Cu
UL factory wiring	1
UL field wiring	1
UL Recognized	1

#### German Lloyd approval

DNV GL Certificate number	TAE00002JG
DNV GL Location Classes	Temperature: B, Humidity: B, Vibration: A
DNV GL approval granted	1
DNV GL rated cross-section	4 mm <sup>2</sup>
DNV GL rated current	41 A
DNV GL rated impulse voltage	8 kV
DNV GL rated voltage	1000 V
DNV GL test standard	IEC 60947-7-1:2009

Media





### Accessories

#### Cover

Cover, Width: 6 mm, Colour: Yellow



Article number	Article name	GTIN (EAN)	Packaging unit
<u>17296.8</u>	SAD 1/6/B YE	4044211205447	50 ST

#### Measurement pick-off terminal

Measurement pick-off terminal, Screw connection, Mounting type: On base, Rated cross-section: 2.5 mm², Width: 5.9 mm, Colour: Beige



Article number	Article name	GTIN (EAN)	Packaging unit
<u>17120.2</u>	SMAG 4/2,5 BG	4044211172107	10 ST

#### End plate

End plate, Width: 1.5 mm, Colour: Beige



Article number	Article name	GTIN (EAN)	Packaging unit
<u>2001.2</u>	AP 2,5-10 BG	4044211047979	50

#### End stop

End stop, Mounting type: Mounting rail TS 35/7.5 and TS 35/15, Width: 8 mm, Colour: Beige



Article number	Article name	GTIN (EAN)	Packaging unit
<u>17250.2</u>	SES 35 BG	4044211178253	50

#### Insulation cap for cross-connector



Insulating cap, Colour: Yellow

Article number	Article name	GTIN (EAN)	Packaging unit
<u>17200.8</u>	SQIK 2,5-10 YE	4044211148539	20

### Insulated cross-connector



Insulated cross-connector, No. of poles: 3, Mounting type: Plug in, Width: 17.4 mm, Rated cross-section: 4 mm<sup>2</sup>, Colour: Yellow

Article number	Article name	GTIN (EAN)	Packaging unit
<u>17212.8</u>	SQI 4/3 YE	4044211148652	50



Insulated cross-connector, No. of poles: 2, Mounting type: Plug in, Width: 11.3 mm, Rated cross-section: 4 mm<sup>2</sup>, Colour: Yellow

Article number	Article name	GTIN (EAN)	Packaging unit
<u>17211.8</u>	SQI 4/2 YE	4044211148645	50



Insulated cross-connector, No. of poles: 8, Mounting type: Plug in, Width: 47.9 mm, Rated cross-section: 4 mm<sup>2</sup>, Colour: Yellow

Article number	Article name	GTIN (EAN)	Packaging unit
<u>17217.8</u>	SQI 4/8 YE	4044211148706	10



Insulated cross-connector, No. of poles: 9, Mounting type: Plug in, Width: 54 mm, Rated cross-section: 4 mm<sup>2</sup>, Colour: Yellow

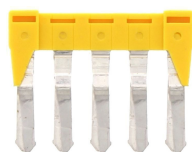
Article number	Article name	GTIN (EAN)	Packaging unit
<u>17218.8</u>	SQI 4/9 YE	4044211148713	10



Insulated cross-connector, No. of poles: 10, Mounting type: Plug in, Width: 60.1 mm, Rated cross-section: 4 mm<sup>2</sup>, Colour: Yellow

Article number	Article name	GTIN (EAN)	Packaging unit
<u>17219.8</u>	SQI 4/10 YE	4044211148720	10

### Insulated cross-connector



Insulated cross-connector, No. of poles: 5, Mounting type: Plug in, Width: 29.6 mm, Rated cross-section: 4 mm<sup>2</sup>, Colour: Yellow

Article number	Article name	GTIN (EAN)	Packaging unit
<u>17214.8</u>	SQI 4/5 YE	4044211148676	20



Insulated cross-connector, No. of poles: 6, Mounting type: Plug in, Width: 35.7 mm, Rated cross-section: 4 mm<sup>2</sup>, Colour: Yellow

Article number	Article name	GTIN (EAN)	Packaging unit
<u>17215.8</u>	SQI 4/6 YE	4044211148683	20



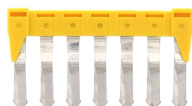
Insulated cross-connector, No. of poles: 4, Mounting type: Plug in, Width: 23.5 mm, Rated cross-section: 4 mm<sup>2</sup>, Colour: Yellow

Article number	Article name	GTIN (EAN)	Packaging unit
<u>17213.8</u>	SQI 4/4 YE	4044211148669	20



Insulated cross-connector, No. of poles: 30, Mounting type: Plug in, Width: 181.1 mm, Rated cross-section: 4 mm<sup>2</sup>, Colour: Yellow

Article number	Article name	GTIN (EAN)	Packaging unit
<u>17220.8</u>	SQI 4/30 YE	4044211148737	5



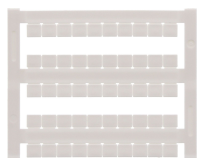
Insulated cross-connector, No. of poles: 7, Mounting type: Plug in, Width: 41.8 mm, Rated cross-section: 4 mm<sup>2</sup>, Colour: Yellow

Article number	Article name	GTIN (EAN)	Packaging unit
<u>17216.8</u>	SQI 4/7 YE	4044211148690	20

# Data sheet

## 17104.1 SRK 4/2A GN

### Quick marking



Terminal marker / Pocket Maxicard, Length: 5 mm, Width: 6 mm, Colour: White

Article number	Article name	GTIN (EAN)	Packaging unit
<u>4702.7</u>	PMC SB 6/50 WH	4044211089986	500 ST

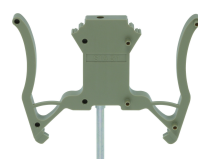
### Screwdriver



Screwdriver with bare blade, Colour: Black-grey

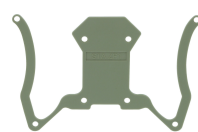
Article number	Article name	GTIN (EAN)	Packaging unit
<u>1086.0</u>	SDB 0,6x3,5	4044211014797	1 ST

### Test adapters



Test adapter, Length: 70 mm, Pitch size: 5 mm, Colour: Beige

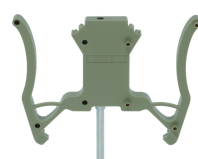
Article number	Article name	GTIN (EAN)	Packaging unit
<u>17260.2</u>	STA 5/1 BG	4044211171599	10 ST



Test adapter, Length: 70 mm, Pitch size: 1 mm, Colour: Beige

Article number	Article name	GTIN (EAN)	Packaging unit
<u>17261.2</u>	STA ZP1 BG	4044211171605	10 ST

### ##INVERSE##CONTA-CONNECT



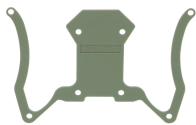
Test adapter, Length: 70 mm, Pitch size: 5 mm, Colour: Beige

Article number	Article name	GTIN (EAN)	Packaging unit
<u>17260.2</u>	STA 5/1 BG	4044211171599	10 ST

# Data sheet

## 17104.1 SRK 4/2A GN

##INVERSE##CONTA-CONNECT



Test adapter, Length: 70 mm, Pitch size: 1 mm, Colour: Beige

Article number	Article name	GTIN (EAN)	Packaging unit
<u>17261.2</u>	STA ZP1 BG	4044211171605	10 ST



Measurement pick-off terminal, Screw connection, Mounting type: On base, Rated cross-section: 2.5 mm², Width: 5.9 mm, Colour: Beige

Article number	Article name	GTIN (EAN)	Packaging unit
<u>17120.2</u>	SMAG 4/2,5 BG	4044211172107	10 ST