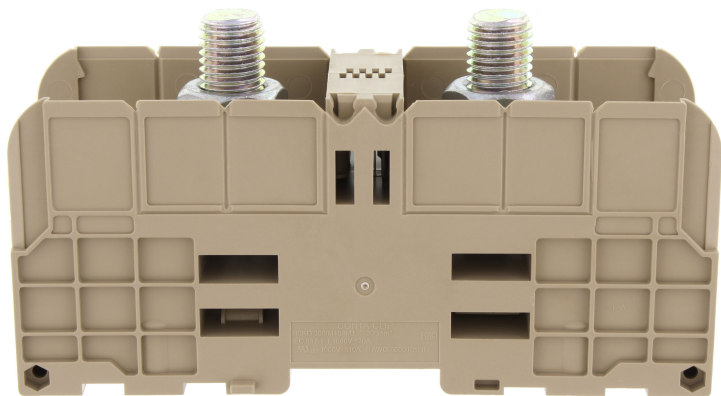


# Data sheet

## 17027.2 HSKG 300/M16/B/B BG



High-power stud terminal, Stud connection, Mounting type: Mounting rail TS 35/7.5, Rated cross-section: 300 mm², Width: 55 mm, Colour: Beige

### Business data

Article number	17027.2
Article name	HSKG 300/M16/B/B BG
GTIN (EAN)	4044211177447
Packaging unit	5
Quantity unit	PC
Weight per piece (not including packaging)	510 g
Weight per piece (including packaging)	529 g
Unit of weight	G
Customs number	85369010
Country of origin	DE
Product description	High-power stud terminal
Colour	Beige

### Technical data

#### Dimensions

Length	164 mm
Length with TW/ADH	288 mm
Width	55 mm
Height TS 35/7.5	86 mm
Height TS 35/7.5 with TW/ADH	90 mm

#### Ratings

Rated voltage	1000 V
Rated current	520 A
Rated cross-section	300 mm <sup>2</sup>
Rated impulse voltage	8 kV
Overvoltage category	III
Contamination degree	3
Maximum power dissipation for nominal condition	16.64 W

#### Connection data

Connection principle	Stud connection
Connection position	Top
Connections	2
Number of terminals per level	2
Number of levels	1
Wire cross-section AWG, min.	6
Wire cross-section AWG, max.	600 Kcmil
Bolt head	Hexagon
Bolt thread	M 16
Tightening torque, min.	25 Nm
Tightening torque, max.	60 Nm
Contact wire range	≤ 300 mm <sup>2</sup>

#### Materials

Insulation housing	Polyamide 6.6
Flammability class UL 94	V-0
Working temperature, min.	-40 °C
Working temperature, max.	120 °C

### Technical data

#### Further technical data

Mounting type	Mounting rail TS 35/7,5
Spanner width (AF)	24 mm
Number of cross-connection channels	2
DIN 46234 / 1 cable lug per side, min.	25 mm <sup>2</sup>
DIN 46234 / 1 cable lug per side, max.	240 mm <sup>2</sup>
DIN 46234 / 2 cable lugs per side, min.	50 mm <sup>2</sup>
DIN 46234 / 2 cable lugs per side, max.	240 mm <sup>2</sup>
DIN 46235: 1 cable lug per side, max.	300 mm <sup>2</sup>
DIN 46235: 1 cable lug per side, min.	50 mm <sup>2</sup>
DIN 46235: 2 cable lugs per side, min.	50 mm <sup>2</sup>
DIN 46235: 2 cable lugs per side, max.	240 mm <sup>2</sup>

#### Environmental Product Compliance

REACH Conform	yes
REACH Reference date	2023-06-14
REACH Candidate Substance Note	No
RoHS Conform	yes

### Approvals

#### Standards and regulations

Bureau Veritas approval	IEC 60947-7-1
Bureau Veritas approval granted	yes
EAC approval	TR ZU 004/2011
EAC approval granted	yes

#### cUL Recognized

cUL approval	C22.2 No 158
cUL Usegroup B: rated voltage	1000 V
cUL Usegroup B: rated current	510 A
cUL Usegroup C: rated voltage	1000 V
cUL Usegroup C: rated current	510 A
cUL wire cross-section AWG, min.	6
cUL wire cross-section AWG, max.	600 Kcmil
cUL torque, min.	25 Nm
cUL torque, max.	60 Nm
cUL wire material	Cu
cUL Recognized	1

#### KEMA KEUR approval

KEMA KEUR approval	EN 60947-7-1:2009
KEMA KEUR approval granted	yes
KEMA rated voltage	1000 V
KEMA rated current	520 A
KEMA rated impulse voltage	8 kV
KEMA wire cross-section, max.	300 mm <sup>2</sup>
KEMA torque, min.	25 Nm
KEMA torque, max.	60 Nm

### Approvals

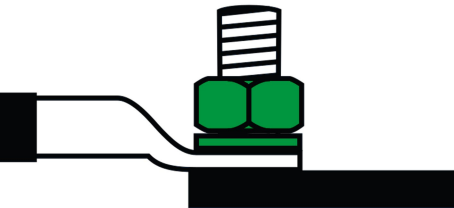
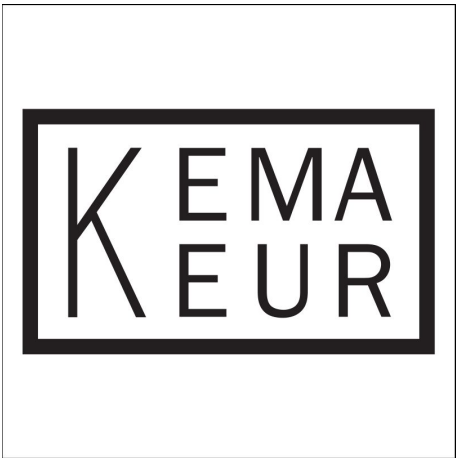
#### UL Recognized

UL approval	UL 1059
UL Usegroup B: rated voltage	1000 V
UL Usegroup B: rated current (only for factory wiring)	420 (510) A
UL Usegroup C: rated voltage	1000 V
UL Usegroup C: rated current (only for factory wiring)	420 (510) A
UL wire cross-section AWG, min.	6
UL wire cross-section AWG, max.	600 Kcmil
UL torque, min.	221.3 Lb In.
UL torque, max.	531 Lb In.
UL wire material	Cu
UL factory wiring	1
UL field wiring	1
UL Recognized	1

#### German Lloyd approval

DNV GL Certificate number	TAE00002JH
DNV GL Location Classes	Temperature: B, Humidity: B, Vibration: A
DNV GL approval granted	1
DNV GL rated cross-section	300 mm <sup>2</sup>
DNV GL rated current	520 A
DNV GL rated impulse voltage	8 kV
DNV GL rated voltage	1000 V
DNV GL test standard	IEC 60947-7-1:2009

Media



## Accessories

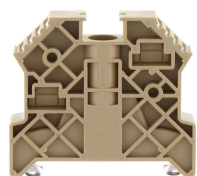
### Protective hood



Cover profile, Length: 139.5 mm, Width: 52.9 mm, Colour: Yellow

Article number	Article name	GTIN (EAN)	Packaging unit
<u>17123.8</u>	ADH 185/300 YE	4044211177478	10

### End stop



End stop, Mounting type: Mounting rail TS 35/7.5, Width: 9.5 mm, Colour: Beige

Article number	Article name	GTIN (EAN)	Packaging unit
<u>2828.0</u>	ES 35/K/ST BG	4044211055547	50

### Cross-connection rail



Cross-connector, No. of poles: 2, Mounting type: Can be screwed on, Width: 95 mm, Rated cross-section: 300 mm<sup>2</sup>, Colour: natural

Article number	Article name	GTIN (EAN)	Packaging unit
<u>17245.0</u>	QS 2/300/16	4044211178062	10 ST



Cross-connector, No. of poles: 3, Mounting type: Can be screwed on, Width: 150 mm, Rated cross-section: 300 mm<sup>2</sup>, Colour: natural

Article number	Article name	GTIN (EAN)	Packaging unit
<u>17246.0</u>	QS 3/300/16	4044211178079	10 ST

# Data sheet

## 17027.2 HSKG 300/M16/B/B BG



### Partition plate

Partition platefor HSKG 185 and HSKG 300, Length: 229 mm, Width: 2 mm, Colour: Beige



Article number	Article name	GTIN (EAN)	Packaging unit
<u>17263.2</u>	TW HSKG BG	4044211185930	10 ST

### ##INVERSE##CONTA-CONNECT

Partition platefor HSKG 185 and HSKG 300, Length: 229 mm, Width: 2 mm, Colour: Beige



Article number	Article name	GTIN (EAN)	Packaging unit
<u>17263.2</u>	TW HSKG BG	4044211185930	10 ST