

# Data sheet

## 17014.0 QS 2/120/10



Cross-connector, No. of poles: 2, Mounting type: Can be screwed on, Width: 62 mm, Rated cross-section: 120 mm², Colour: natural

### Business data

Article number	17014.0
Article name	QS 2/120/10
GTIN (EAN)	4044211131609
Packaging unit	10
Quantity unit	PC
Weight per piece (not including packaging)	49 g
Weight per piece (including packaging)	49.4 g
Unit of weight	G
Customs number	85389099
Country of origin	DE
Product description	Cross-connector
Colour	Natural

### Technical data

#### Dimensions

Length	25 mm
Width	62 mm
Height	4 mm
Hole diameter	10.6 mm
Hole spacing (mid-point to mid-point)	34 mm
Pitch size	34 mm

#### Connection data

No. of poles	2
--------------	---

#### Materials

Material	Copper
Surface	Tin-plated

#### Further technical data

Mounting type	Screwable
Number of bridged terminals	2

#### Environmental Product Compliance

REACH Conform	yes
REACH Reference date	2023-06-14
REACH Candidate Substance Note	No
RoHS Conform	yes

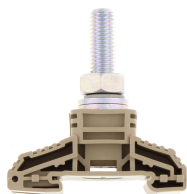
---

**Media**

---

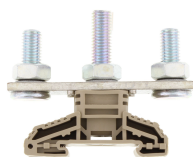
Accessories

##INVERSE##CONTA-CONNECT



High-power stud terminal, Stud connection, Mounting type: Mounting rail TS 35/7.5,  
Rated cross-section: 120 mm², Width: 32 mm, Colour: Beige

Article number	Article name	GTIN (EAN)	Packaging unit
<u>17003.2</u>	HSK 120/M10 B BG	4044211131487	10 ST



High-power stud terminal, Stud connection, Mounting type: Mounting rail TS 35/7.5,  
Rated cross-section: 120 mm², Width: 32 mm, Colour: Beige

Article number	Article name	GTIN (EAN)	Packaging unit
<u>17007.2</u>	HSK 120/M10 B/B BG	4044211131524	10 ST