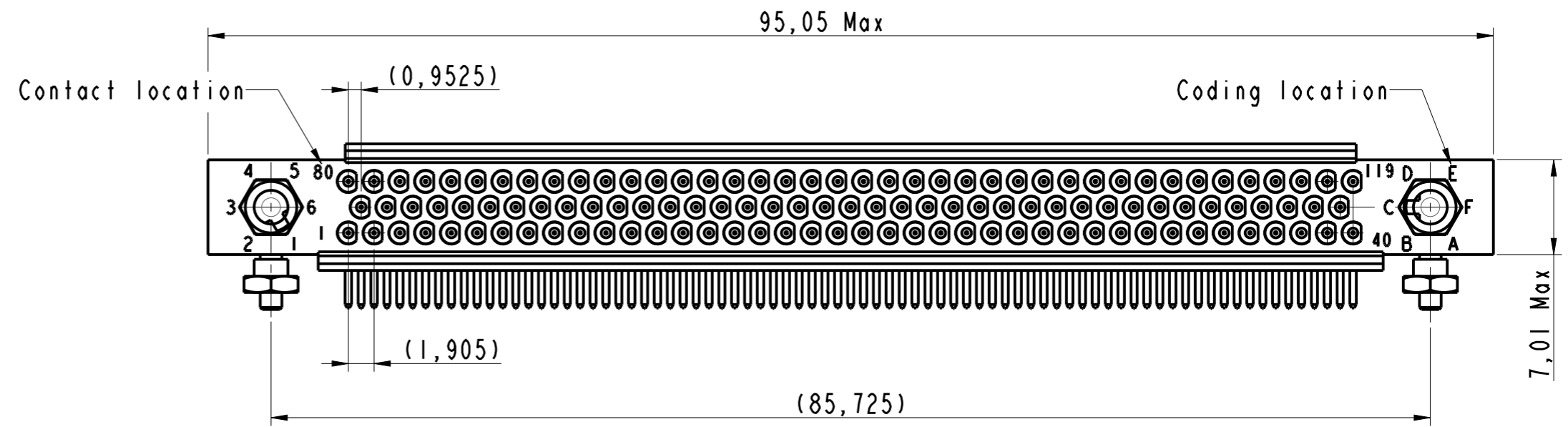
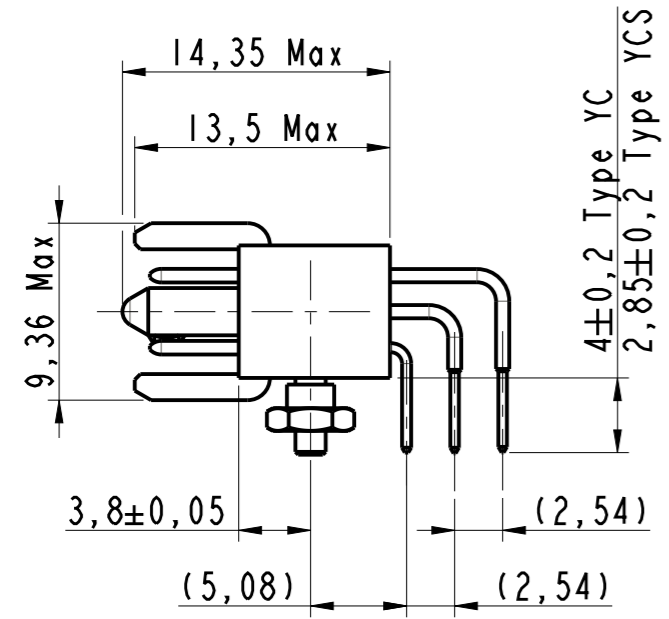
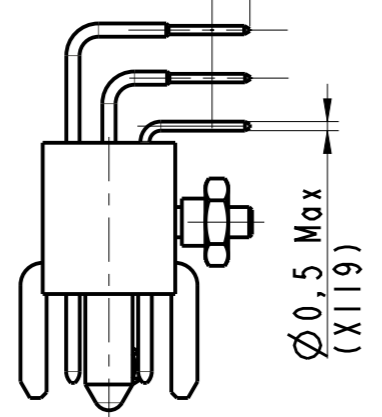
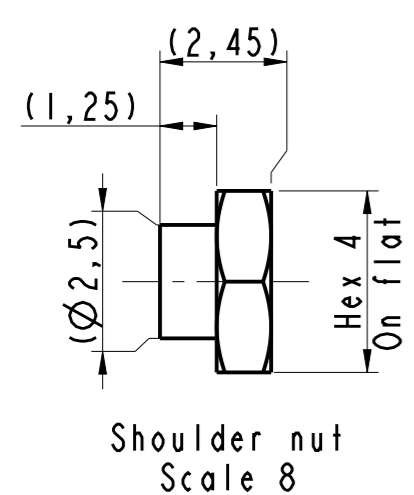


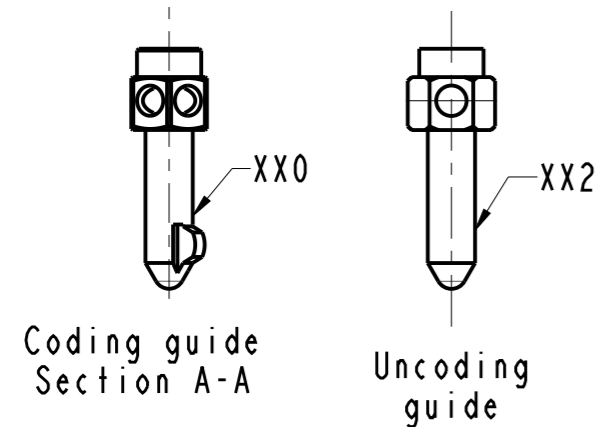
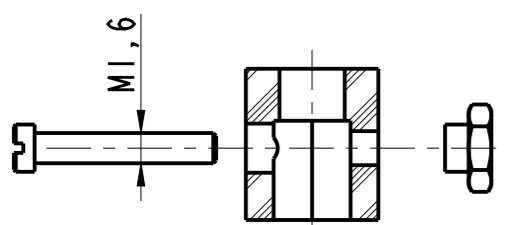
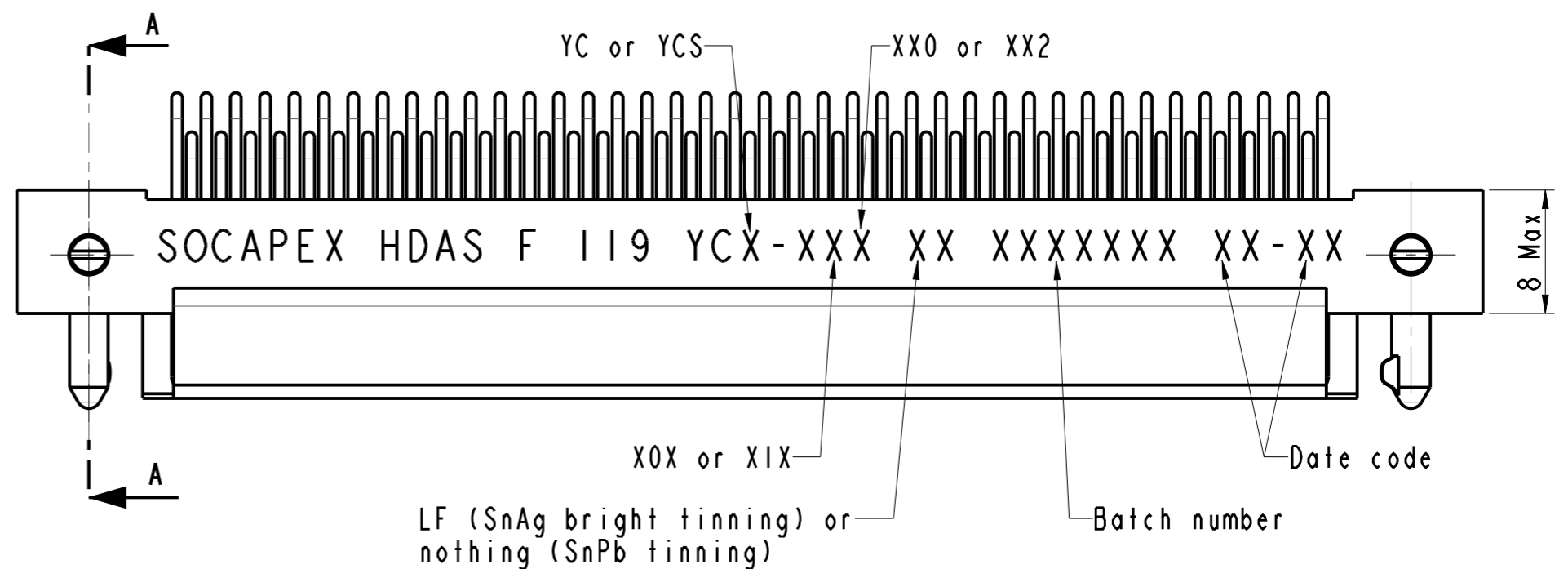
IN THE CONSTANT PURPOSE OF IMPROVING ITS PRODUCTS, Amphenol Socapex RESERVES THE RIGHT TO MODIFY ANY DIMENSION OR CHARACTERISTICS. FM.NPD.0036.THYZE.PUNE rev C



Tinning: deviation XIX
 2 Min for YCS
 3 Min for YC



Rows
c
b
a



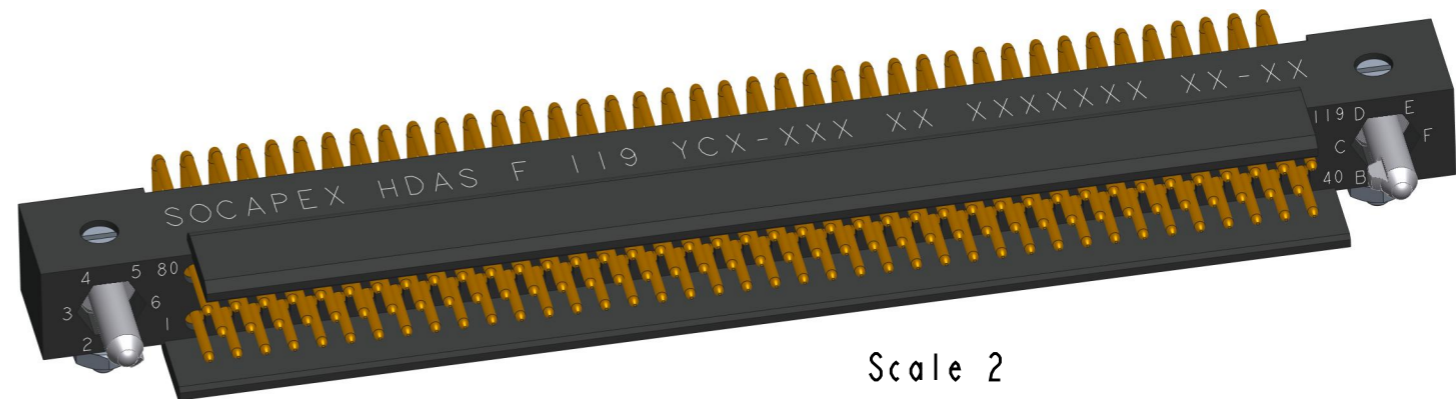
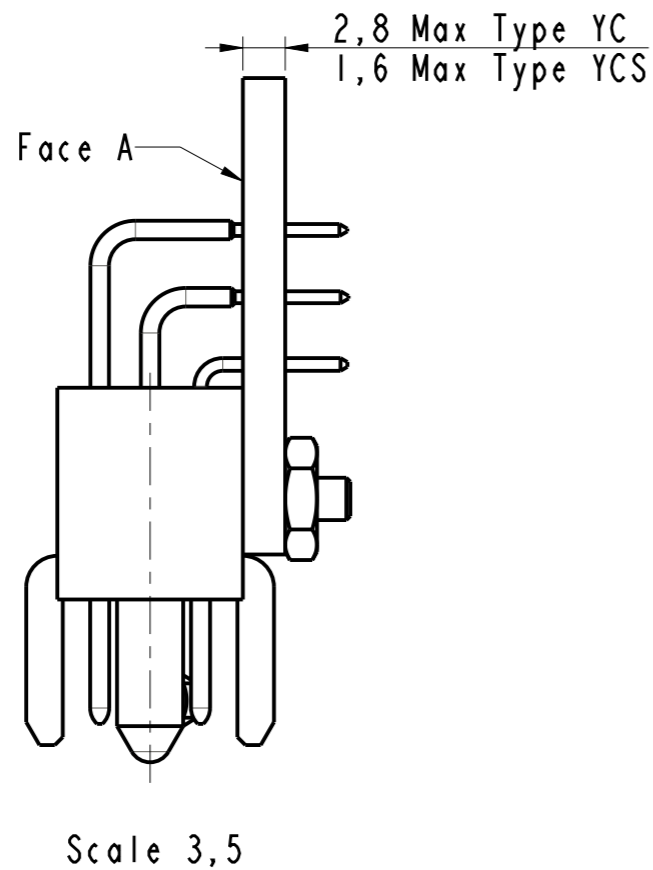
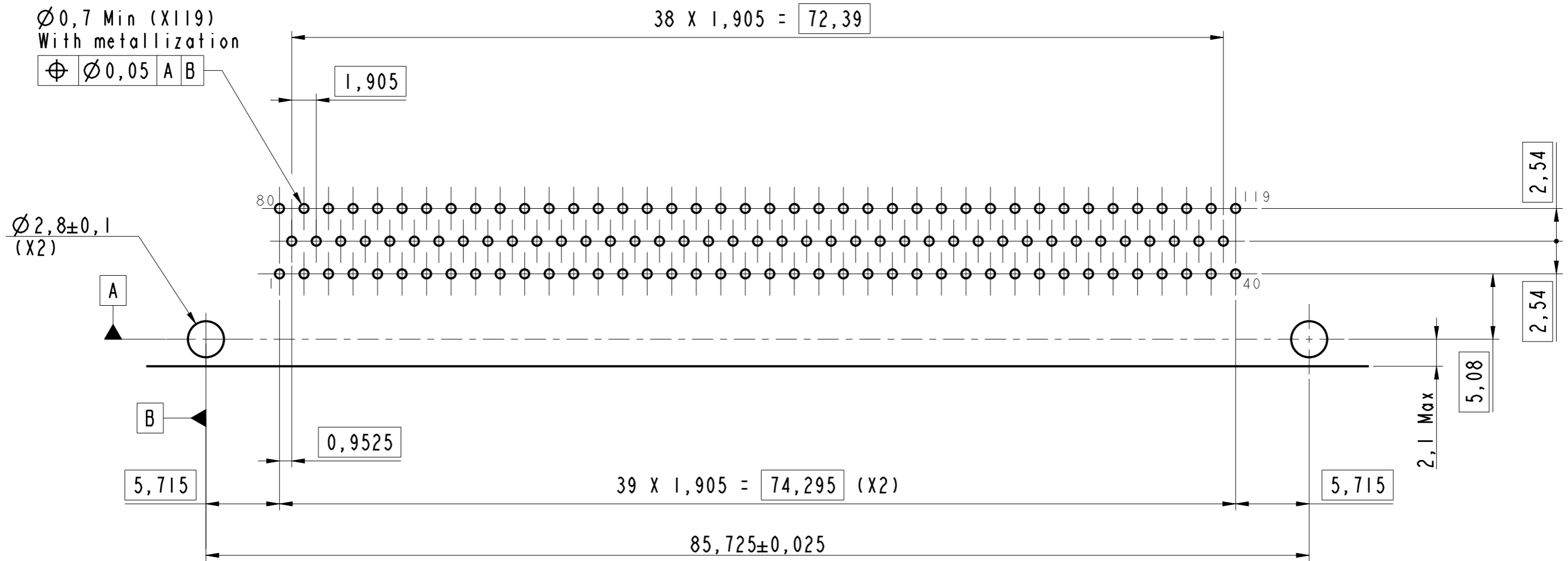
Notes:

- Part: HDAS F 119 YCX-XXX XX
- External dimensions for a male plug with 119 signal contacts type YCX
- Connector delivered with fittings not assembled, coupling torque : 0,15 Nm
- Standard OXX : Nickel plated over brass fittings.
Deviation IXX : Passivated stainless steel fittings.
- Standard XOX : Contacts gold plated (RoHS)
Deviation XIX : Contacts tail Hot dip tinned SnPb (non RoHS) or SnAg (RoHS)

HDAS F 119 YCX-XXX XX

DRAWN BY : S Satpute		UPDATED BY: S Satpute		LAST APPROVED BY: T Carrier	
ALL DIMENSIONS ARE IN MM	AMPHENOL SOCAPEX			ORIGINAL DRAWING DATE : 03/09/2019	CONFIGURATION DATA ARE AVAILABLE IN PDM
				SCALE : 2,5	REV : D
B.P. 29 74311 THYZE CEDEX				169-PLC-1325-00	

PCB layout Face A



HDAS F 119 YCX-XXX XX

DRAWN BY : S Satpute		UPDATED BY : S Satpute		LAST APPROVED BY : T Carrier	
ALL DIMENSIONS ARE IN MM	AMPHENOL SOCAPEX			ORIGINAL DRAWING DATE : 03/09/2019	CONFIGURATION DATA ARE AVAILABLE IN PDM
				REV : D	PAGE : 2/2
SCALE : 3	B.P. 29 74311 THYEZ CEDEX			169-PLC-1325-00	

IN THE CONSTANT PURPOSE OF IMPROVING ITS PRODUCTS, Amphenol Socapex RESERVES THE RIGHT TO MODIFY ANY DIMENSION OR CHARACTERISTICS.
 FM.NPD.0036.THYEZ.PUNE rev C