

D-SUB power contact - VS-ST-LK-3,6/22,4/4,6 - 1688269

Please be informed that the data shown in this PDF Document is generated from our Online Catalog. Please find the complete data in the user's documentation. Our General Terms of Use for Downloads are valid (<http://download.phoenixcontact.com>)



Power contacts, for D-SUB combination inserts, pin, solder cup, straight, rated current 40 A, gold-plated



Key commercial data

Packing unit	1
Minimum order quantity	1
Catalog page	Page 439 (PC-2011)
GTIN	 4 017918 179663
Custom tariff number	85369010
Country of origin	GERMANY

Technical data

Mechanical characteristics

Insertion/withdrawal cycles	≥ 500
Connection method	Solder cup
Conductor cross section	4.5 mm ² ... 8.5 mm ²
Connection cross section AWG	10 ... 8
Insertion force per signal contact	≤ 7.00 N
Extraction force per signal contact	Approx. 5 N
Ambient temperature (operation)	-55 °C ... 155 °C

Material data

Contact material	Copper alloy
Contact surface material	Hard gold-plated over nickel

Electrical characteristics

Rated current	40 A
Insulation resistance	≥ 5 GΩ

D-SUB power contact - VS-ST-LK-3,6/22,4/4,6 - 1688269

Classifications

eclass

eCl@ss 4.0	27140816
eCl@ss 4.1	27260701
eCl@ss 5.0	27260701
eCl@ss 5.1	27260701
eCl@ss 6.0	27260705
eCl@ss 7.0	27440309

etim

ETIM 2.0	EC000438
ETIM 3.0	EC000438
ETIM 4.0	EC000438
ETIM 5.0	EC000438

unspsc

UNSPSC 6.01	30211923
UNSPSC 7.0901	39121522
UNSPSC 11	39121522
UNSPSC 12.01	39121522
UNSPSC 13.2	39121522

Accessories

Accessories

Tools

Removal tool - HC-M4-KOAX-EWZ - 1676747

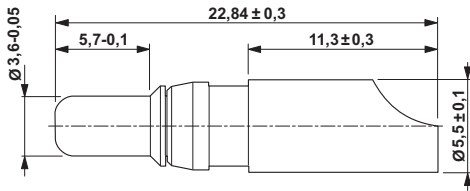


Contact removal tool for coaxial contacts

Drawings

D-SUB power contact - VS-ST-LK-3,6/22,4/4,6 - 1688269

Dimensioned drawing



D-SUB power contact pin

© Phoenix Contact 2012 - all rights reserved
<http://www.phoenixcontact.com>