

Specification Sheet

Part Number: 167-00202

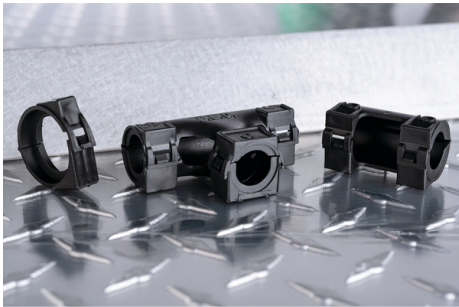
Living hinge allows harness serviceability and reduces assembly time. Internal ribs affix to exterior of tubing which prevents slipping during tension or movement.

Snap-on connection makes installations quick and easy and increases efficiencies in harness assembly.

Junction point outlets offer additional areas to branch off wires and prevents wires from sliding or accidental removal from tubing.

Improves aesthetics of assembled wire harness.

No tools required to disassemble.



Hinged Convoluted Loom Tubing T-Fitting, L- 0.75" x C- 0.50" x R- 0.75", PP, Black, 175/pkg

Article Number	167-00202
Type	CTHC-T757
Color	Black (BK)
Quantity Per	carton

Product Description	Convuluted Loom fittings are single piece hinged connectors that simply snap-on over slit and unslit loom tubing to secure wire branchouts or, connect different tubing diameters. The unique wrap around design makes installation easier and more efficient, while the unique junction points make easy branchouts that keep wires from sliding out of the tubing and eliminates need for secondary taping operation. The polypropylene material creates a sleek assembly and improves the appearance of the entire wiring assembly.
Short Description	Hinged Convuluted Loom Tubing T-Fitting, L- 0.75" x C- 0.50" x R- 0.75", PP, Black, 175/pkg
Global Part Name	CTHC-T757-PP-BK
Variant	Fittings
Inner Diameter D (Imperial)	0.75
Inner Diameter D (Metric)	19.1
Diameter D (Imperial)	0.75
Diameter D (Metric)	19.1
Material	Polypropylene (PP)
Material Shortcut	PP
Flammability	UL 94 HB
Halogen Free	Yes

UV Resistant (Yes/No)	No
Operating Temperature	-4°F to +194°F (-20°C to +90°C)
Reach Compliant (Article 33)	No
ROHS Compliant	Yes
Package Quantity (Imperial)	175
Package Quantity (Metric)	175
Customs Number	3926909988

About HellermannTyton

HellermannTyton is a global manufacturer of cable management and identification solutions for automotive, solar, electrical, construction, industrial automation, broadband and other OEM markets. The company's integrated approach to product design, sustainability, production, quality assurance and delivery is optimized to benefit local and global customers. HellermannTyton operates in 39 countries, with North American headquarters in Milwaukee, Wisconsin. (www.hellermann.tyton.com).

© 2023 HellermannTyton. All Rights Reserved.

[Contact Us](#) [RoHS/WEEE Compliance](#) [Disclaimer](#) [Terms and Conditions](#)