

LILIAN-ON

~10° + 80° beam for wall grazing

SPECIFICATION:

Dimensions	286.4 x 27.0 mm
Height	14.8 mm
ROHS compliant	yes ⓘ

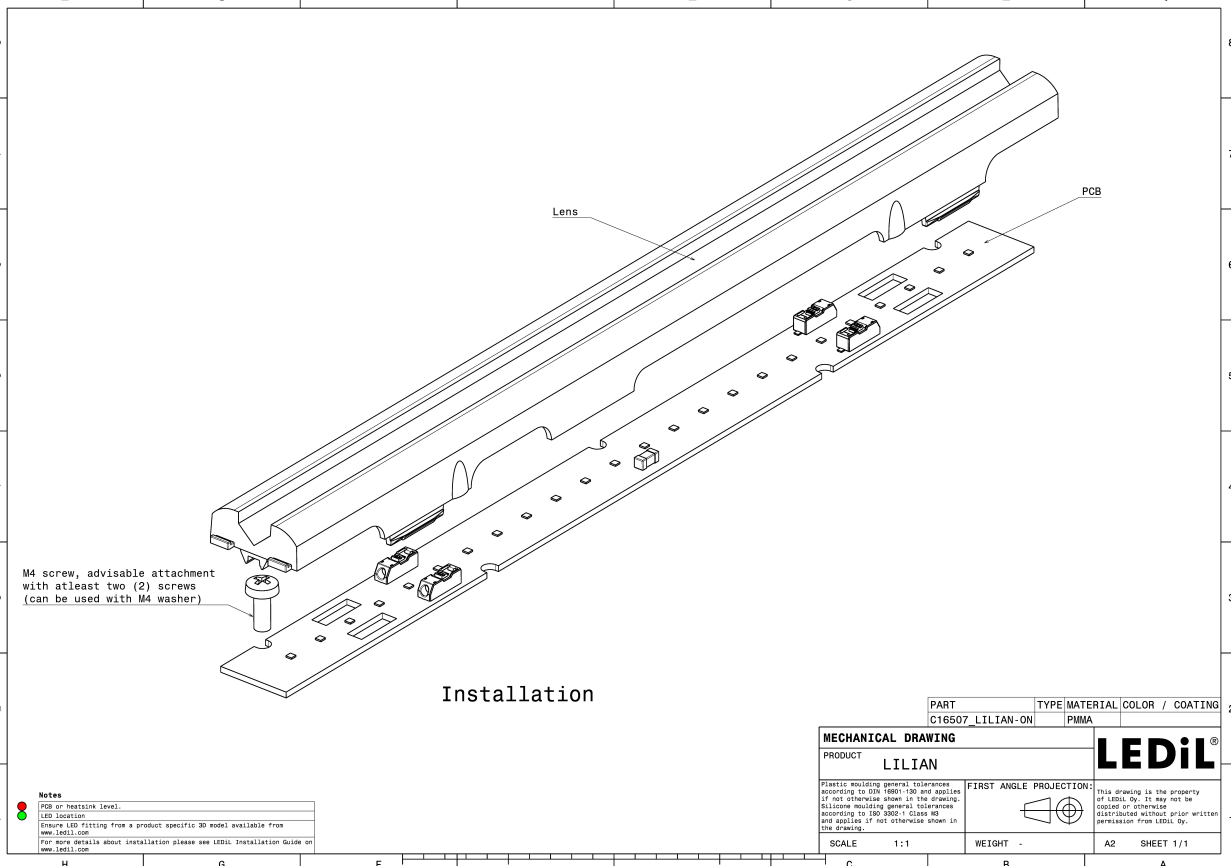
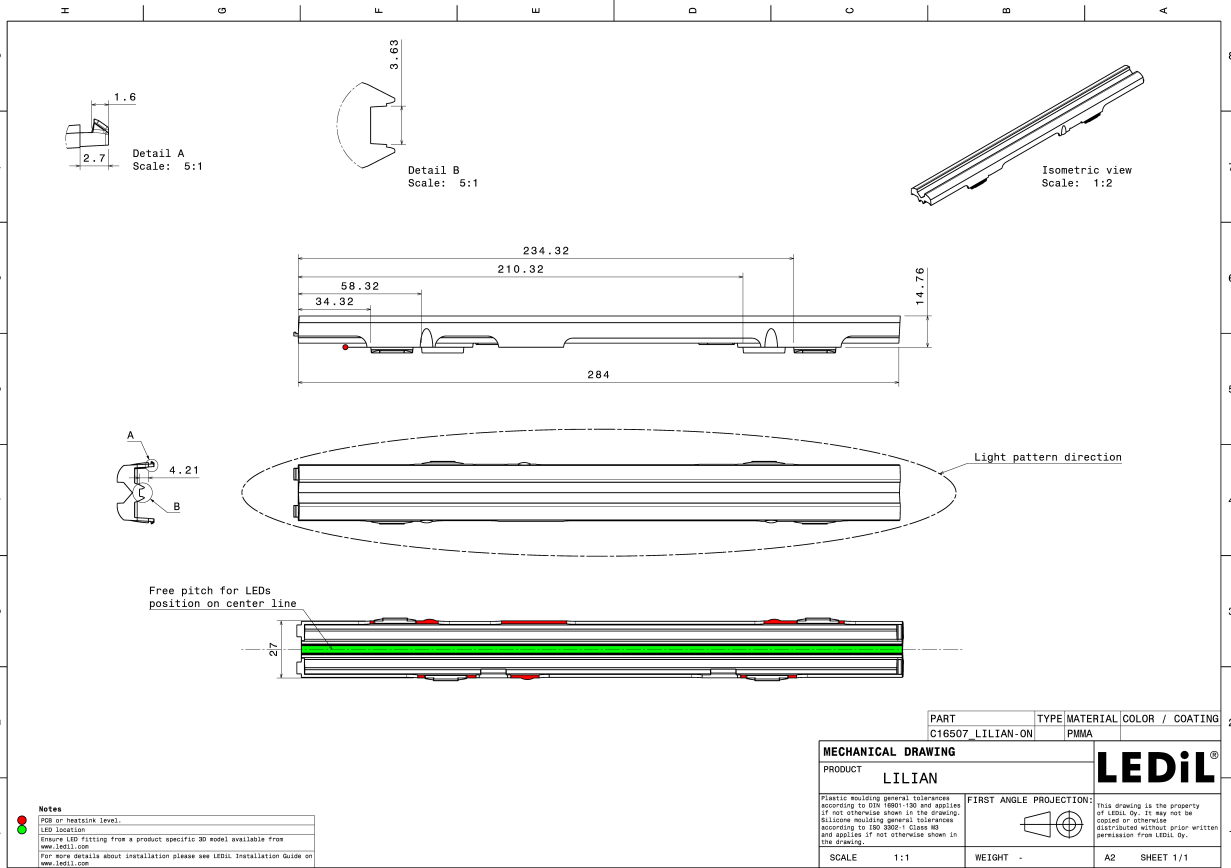
MATERIALS:

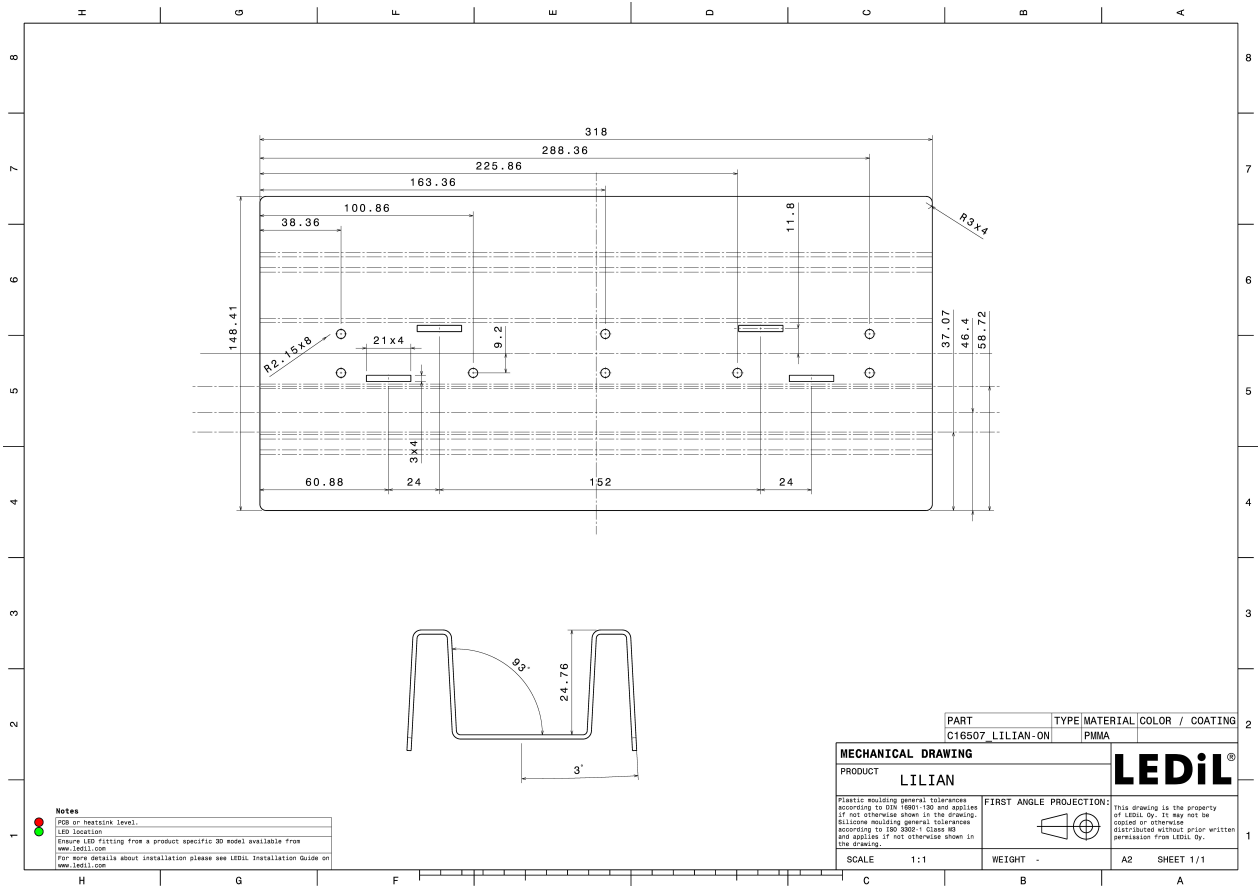
Component	Type	Material	Colour	Finish
LILIAN-ON	Linear lens	PMMA	clear	



ORDERING INFORMATION:

Component	Qty in box	MOQ	MPQ	Box weight (kg)
C16507_LILIAN-ON » Box size: 400 x 300 x 160 mm	84	84	14	4.3



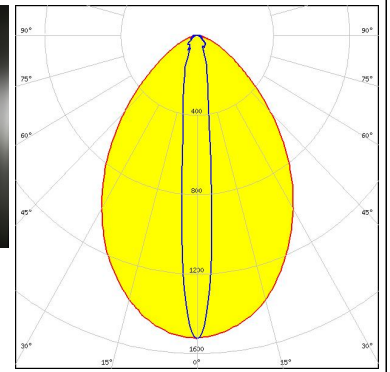


See also our general installation guide: www.ledil.com/installation_guide

OPTICAL RESULTS (MEASURED):



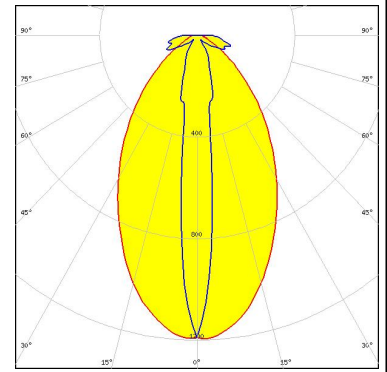
LED	NCSxE17A
FWHM / FWTM	76.0 + 12.0° / 125.0 + 41.0°
Efficiency	80 %
Peak intensity	1.5 cd/lm
LEDs/each optic	1
Light colour	White
Required components:	



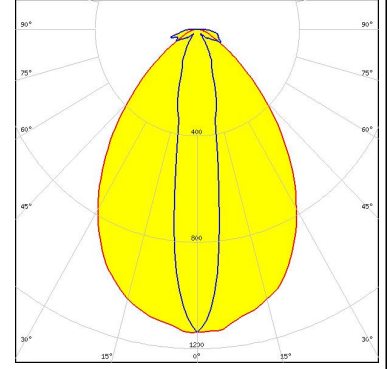
OPTICAL RESULTS (SIMULATED):



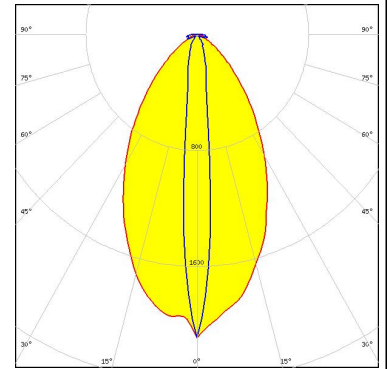
LED XD16
 FWHM / FWTM 64.0 + 12.0° / 117.0 + 46.0°
 Efficiency 87 %
 Peak intensity 1.2 cd/lm
 LEDs/each optic 1
 Light colour White
 Required components:



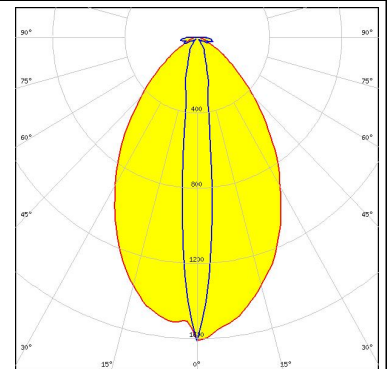
LED XM-L
 FWHM / FWTM 76.0 + 18.0° / 118.0 + 54.0°
 Efficiency 86 %
 Peak intensity 1.1 cd/lm
 LEDs/each optic 1
 Light colour RGBW
 Required components:



LED XP-E
 FWHM / FWTM 57.0 + 11.0° / 106.0 + 34.0°
 Efficiency 88 %
 Peak intensity 2.1 cd/lm
 LEDs/each optic 1
 Light colour White
 Required components:



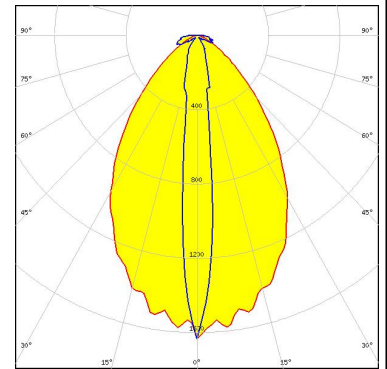
LED XP-G
 FWHM / FWTM 66.0 + 11.0° / 112.0 + 36.0°
 Efficiency 87 %
 Peak intensity 1.6 cd/lm
 LEDs/each optic 1
 Light colour White
 Required components:



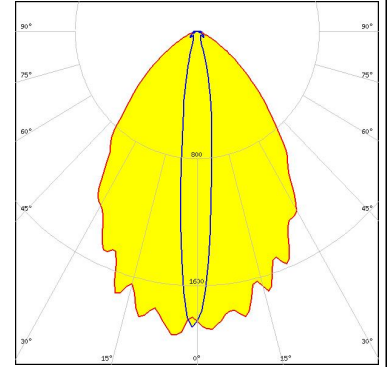
OPTICAL RESULTS (SIMULATED):



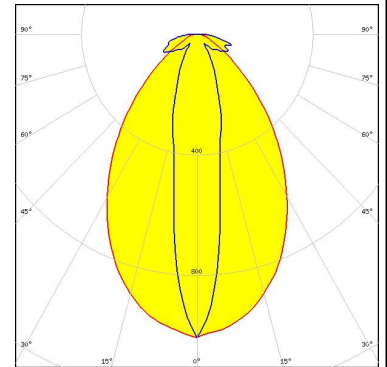
LED XP-G2
FWHM / FWTM 70.0 + 12.0° / 115.0 + 40.0°
Efficiency 88 %
Peak intensity 1.6 cd/lm
LEDs/each optic 1
Light colour White
Required components:



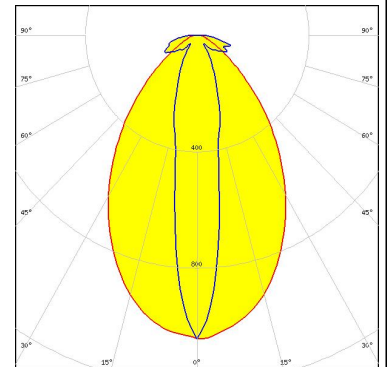
LED LUXEON 2835 Line
FWHM / FWTM 72.0 + 12.0° / 118.0 + 32.0°
Efficiency 90 %
Peak intensity 2 cd/lm
LEDs/each optic 1
Light colour RGBW
Required components:



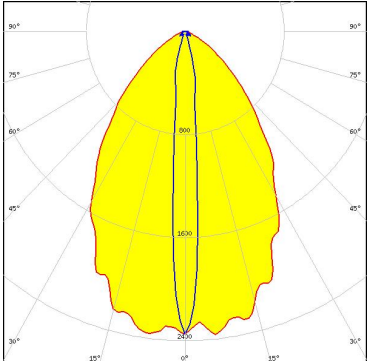
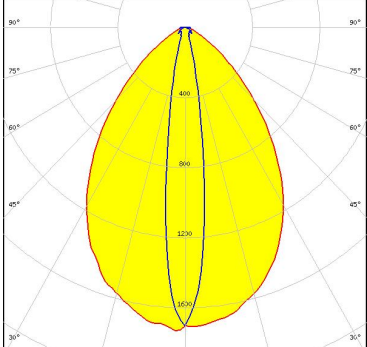
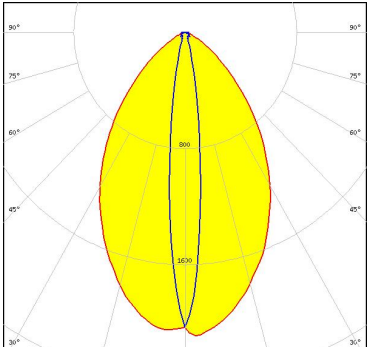
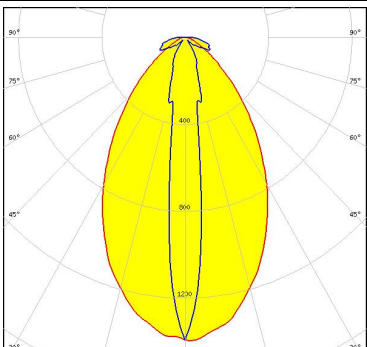
LED LUXEON 3030 2D (Square LES)
FWHM / FWTM 72.0 + 18.0° / 118.0 + 58.0°
Efficiency 87 %
Peak intensity 1 cd/lm
LEDs/each optic 1
Light colour White
Required components:



LED LUXEON 5050 Round LES
FWHM / FWTM 70.0 + 18.0° / 118.0 + 58.0°
Efficiency 87 %
Peak intensity 1 cd/lm
LEDs/each optic 1
Light colour White
Required components:



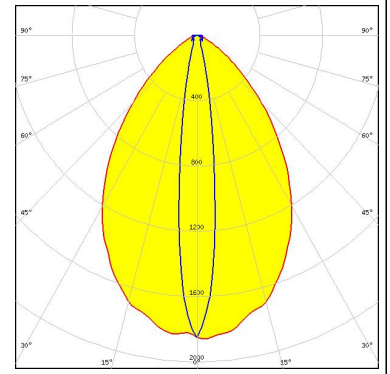
OPTICAL RESULTS (SIMULATED):

<p>LUMILEDS</p> <p>LED: LUXEON CZ FWHM / FWTM: 72.0 + 9.0° / 118.0 + 31.0° Efficiency: 91 % Peak intensity: 2.4 cd/lm LEDs/each optic: 1 Light colour: RGBW Required components:</p>	
<p>NICHIA</p> <p>LED: NF2x757G FWHM / FWTM: 76.0 + 16.0° / 118.0 + 32.0° Efficiency: 87 % Peak intensity: 1.7 cd/lm LEDs/each optic: 1 Light colour: White Required components:</p>	
<p>NICHIA</p> <p>LED: NFSx757G FWHM / FWTM: 68.0 + 12.0° / 114.0 + 30.0° Efficiency: 88 % Peak intensity: 2.1 cd/lm LEDs/each optic: 1 Light colour: White Required components:</p>	
<p>OSRAM Opto Semiconductors</p> <p>LED: Duris S5 (Single chip) FWHM / FWTM: 66.0 + 12.0° / 114.0 + 47.0° Efficiency: 87 % Peak intensity: 1.4 cd/lm LEDs/each optic: 1 Light colour: White Required components:</p>	

OPTICAL RESULTS (SIMULATED):

SAMSUNG

LED	LM28xB Series
FWHM / FWTM	74.0 + 14.0° / 116.0 + 32.0°
Efficiency	88 %
Peak intensity	1.9 cd/lm
LEDs/each optic	1
Light colour	White
Required components:	



GENERAL INFORMATION:

NOTE: The typical beam angle will be changed by different color, chip size and chip position tolerance. The typical total beam angle is the full angle measured where the luminous intensity is half of the peak value.

MATERIALS:

As part of our continuous research and improvement processes, and to ensure the best possible quality and availability of our products, LEDiL reserves the right to change material grades without notice.

PRODUCT DATA USER AGREEMENT AND DISCLAIMER:

The measured data in the provided downloadable LEDiL Product Datasheets and Mechanical 2D-Drawings is rounded and provided as reference for planning. LEDiL Oy's optical specifications have been verified by conducting performance testing of the products in accordance with the company's quality system. The reported data are averaged results of multiple measurements with typical variation. LEDiL Oy reserves the right to without prior notification make changes and improvements to its products.

LEDiL Oy assumes neither warranty, nor guarantee nor any other liability of any kind for the contents and correctness of the provided data. The provided data has been generated with highest diligence but the provided data may in reality not represent the complete possible variation range of all intrinsic parameters. Therefore, in certain cases a deviation from the provided data could occur.

LEDiL Oy reserves the right to undertake technical changes of its products without further notification which could lead to changes in the provided data. LEDiL Oy assumes no liability of any kind for the possible deviation from any provided data or any other damage resulting from the usage of the provided data.

The user agrees to this disclaimer and user agreement with the download or usage of the provided files.

LEDiL Oy

Joensuunkatu 13
FI-24240 SALO
Finland

LEDiL Inc.

228 West Page Street
Suite D
Sycamore IL 60178
USA

Ledil Optics Technology (Shenzhen) Co., Ltd.

405 , Block B
Casic Motor Building
Shenzhen 518057
P.R.CHINA

Local sales and technical support

[www.ledil.com/
where_to_buy](http://www.ledil.com/where_to_buy)

Shipping locations

Salo, Finland
Hong Kong, China

Distribution Partners

[www.ledil.com/
where_to_buy](http://www.ledil.com/where_to_buy)