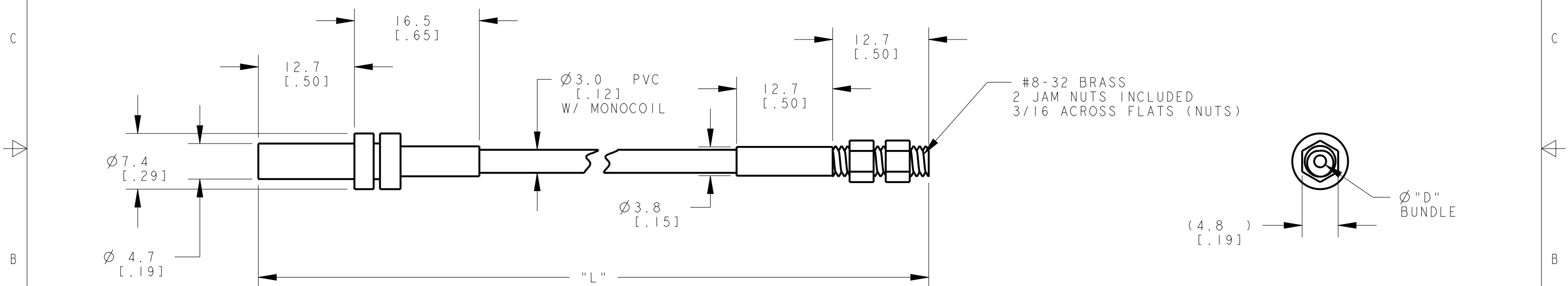
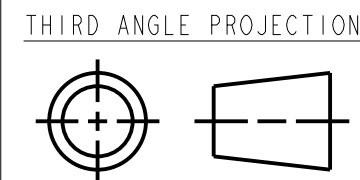


8				7				6				5				4				3				2				1							
MODEL NO.	"L"	"D"	P/N	MODEL NO.	"L"	"D"	P/N	MODEL NO.	"L"	"D"	P/N	MODEL NO.	"L"	"D"	P/N	MODEL NO.	"L"	"D"	P/N	MODEL NO.	"L"	"D"	P/N	MODEL NO.	"L"	"D"	P/N	MODEL NO.	"L"	"D"	P/N				
IMT.446P	1829 [72]	0.69 [.027]	22872	IMT.4410P	3048 [120]	0.69 [.027]	69009	IMT.75.7P	203 [8]	1.17 [.046]	68005	IMT.448P	2438 [96]	0.69 [.027]	71285	IMT.758P	2438 [96]	1.17 [.046]	24356	IMT.75.5P	152 [6]	1.17 [.046]	24325	IMT.751.5P	457 [15]	1.17 [.046]	23730	IMT.751P	305 [12]	1.17 [.046]	23493	IMT.755P	1524 [60]	1.17 [.046]	23215
IMT.756P	1829 [72]	1.17 [.046]	22363	IMT.75.7P	203 [8]	1.17 [.046]	68005	IMT.448P	2438 [96]	0.69 [.027]	71285	IMT.758P	2438 [96]	1.17 [.046]	24356	IMT.75.5P	152 [6]	1.17 [.046]	24325	IMT.751.5P	457 [15]	1.17 [.046]	23730	IMT.751P	305 [12]	1.17 [.046]	23493	IMT.755P	1524 [60]	1.17 [.046]	23215				
IMT.752P	610 [24]	1.17 [.046]	22344	IMT.444P	1219 [48]	0.69 [.027]	22211	IMT.758P	2438 [96]	1.17 [.046]	24356	IMT.75.5P	152 [6]	1.17 [.046]	24325	IMT.751.5P	457 [15]	1.17 [.046]	23730	IMT.751P	305 [12]	1.17 [.046]	23493	IMT.755P	1524 [60]	1.17 [.046]	23215								
IMT.444P	1219 [48]	0.69 [.027]	22211	IMT.443P	914 [36]	0.69 [.027]	22167	IMT.758P	2438 [96]	1.17 [.046]	24356	IMT.75.5P	152 [6]	1.17 [.046]	24325	IMT.751.5P	457 [15]	1.17 [.046]	23730	IMT.751P	305 [12]	1.17 [.046]	23493	IMT.755P	1524 [60]	1.17 [.046]	23215								
IMT.443P	914 [36]	0.69 [.027]	22167	IMT.754P	1219 [48]	1.17 [.046]	21658	IMT.758P	2438 [96]	1.17 [.046]	24356	IMT.75.5P	152 [6]	1.17 [.046]	24325	IMT.751.5P	457 [15]	1.17 [.046]	23730	IMT.751P	305 [12]	1.17 [.046]	23493	IMT.755P	1524 [60]	1.17 [.046]	23215								
IMT.754P	1219 [48]	1.17 [.046]	21658	IMT.442P	610 [24]	0.69 [.027]	21249	IMT.758P	2438 [96]	1.17 [.046]	24356	IMT.75.5P	152 [6]	1.17 [.046]	24325	IMT.751.5P	457 [15]	1.17 [.046]	23730	IMT.751P	305 [12]	1.17 [.046]	23493	IMT.755P	1524 [60]	1.17 [.046]	23215								
IMT.442P	610 [24]	0.69 [.027]	21249	IMT.753P	914 [36]	1.17 [.046]	21073	IMT.758P	2438 [96]	1.17 [.046]	24356	IMT.75.5P	152 [6]	1.17 [.046]	24325	IMT.751.5P	457 [15]	1.17 [.046]	23730	IMT.751P	305 [12]	1.17 [.046]	23493	IMT.755P	1524 [60]	1.17 [.046]	23215								
IMT.753P	914 [36]	1.17 [.046]	21073					IMT.758P	2438 [96]	1.17 [.046]	24356	IMT.75.5P	152 [6]	1.17 [.046]	24325	IMT.751.5P	457 [15]	1.17 [.046]	23730	IMT.751P	305 [12]	1.17 [.046]	23493	IMT.755P	1524 [60]	1.17 [.046]	23215								



NOTES:
 1. ALL DIMENSIONS ARE MILLIMETERS [INCHES] UNLESS OTHERWISE NOTED.
 2. REFER TO "www.bannerengineering.com" FOR ADDITIONAL DATA AND SPECIFICATIONS.

This drawing is the property of BANNER ENGINEERING CORP. Any use or reproduction, in any form, without prior written permission of Banner is prohibited.
 © 2015 Banner Engineering Corp.



		BANNER ENGINEERING CORP.	
		www.bannerengineering.com	
TITLE			
IMT.75 SERIES PVC JACKET			
SIZE	DRAWING NO.	REV.	
B	161922	A	
SCALE	SHEET		CREO
2:1	1 OF 1		