

1614 AWG Vinyl Insulated Ring with Copper Support Sleeve

Material: Tin Plated Copper with Butted Seam

Insulation Material: Blue PVC Vinyl with Funnel Entry Copper Support Sleeve

Maximum Electrical Current: 30 Amps

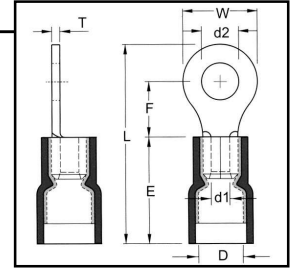
Barrel ID (d1): .091

Maximum Electrical Rating: 75°C, 600V

Barrel OD (D): .197

Material Thickness (T): .031

Barrel Length (E): .413



HOFFMAN PART NO.	STUD SIZE	DIMENSIONS (INCHES)				UL	TAPE MOUNTED REEL QTY	DIE FOR TAPE MOUNTED	HAND TOOL
		STUD DIAMETER	TONGUE WIDTH	STUD CLEARANCE	LENGTH				
		d2	W	F	L				
FVD1614-3	4	.126	.260	.165	.720	Y	1000	3V1614	YNM2210D
FVD1614-M3	6	.146	.260	.248	.783	Y	1000	3V1614	YNM2210D
FVD1614-M4	8	.169	.260	.248	.783	Y	1000	3V1614	YNM2210D
FVD1614-4	8	.169	.335	.307	.878	Y	1000	3V1614	YNM2210D
FVD1614-M5	10	.209	.335	.307	.878	Y	1000	3V1614	YNM2210D
FVD1614-5	10	.209	.374	.287	.878	Y	1000	3V1614	YNM2210D
FVD1614-6	1/4	.252	.472	.433	1.075	Y	1000	3V1614	YNM2210D
FVD1614-8	5/16	.331	.472	.433	1.075	Y	1000	3V1614	YNM2210D
FVD1614-9	3/8	.413	.535	.547	1.220	Y	1000	3V1614	YNM2210D
FVD1614-13	1/2	.512	.756	.630	1.413	Y	1000	3V1614	YNM2210D

1210 AWG Vinyl Insulated Ring with Copper Support Sleeve

Material: Tin Plated Copper with Butted Seam

Insulation Material: Yellow PVC Vinyl with Funnel Entry Copper Support Sleeve

Maximum Electrical Current: 50 Amps

Barrel ID (d1): .134

Maximum Electrical Rating: 75°C, 600V

Barrel OD (D): .268

Material Thickness (T): .039

Barrel Length (E): .531 J Type: .551

HOFFMAN PART NO.	STUD SIZE	DIMENSIONS (INCHES)				UL	TAPE MOUNTED REEL QTY	DIE FOR TAPE MOUNTED	HAND TOOL
		STUD DIAMETER	TONGUE WIDTH	STUD CLEARANCE	LENGTH				
		d2	W	F	L				
FVD1210-S3	6	.146	.283	.240	.913	Y	500	3V1210	YNM2210D
FVD1210-3/J	4	.126	.374	.327	1.063	Y	500	3V1210	YNT1210S
FVD1210-4/J	8	.169	.374	.327	1.063	Y	500	3V1210	YNT1210S
FVD1210-S4	8	.169	.283	.240	.913	Y	500	3V1210	YNM2210D
FVD1210-4	8	.169	.374	.358	1.067	Y	500	3V1210	YNM2210D
FVD1210-5	10	.209	.374	.358	1.067	Y	500	3V1210	YNM2210D
FVD1210-6/J	1/4	.252	.472	.512	1.229	Y	500	3V1210	YNT1210S
FVD1210-S6/J	1/4	.252	.520	.354	1.165	Y	500	3V1210	YNT1210S
FVD1210-6	1/4	.252	.472	.413	1.181	Y	500	3V1210	YNM2210D
FVD1210-8	5/16	.331	.591	.531	1.358	Y	500	3V1210	YNM2210D
FVD1210-9	3/8	.413	.591	.531	1.358	Y	500	3V1210	YNM2210D
FVD1210-13	1/2	.512	.756	.630	1.539	Y	NA	NA	YNM2210D

