

1614 AWG Nylon Insulated Ring with Copper Support Sleeve

Material: Tin Plated Copper with Butted Seam

Insulation Material: Blue 6/6 Nylon with Funnel Entry Copper Support Sleeve

Maximum Electrical Current: 30 Amps

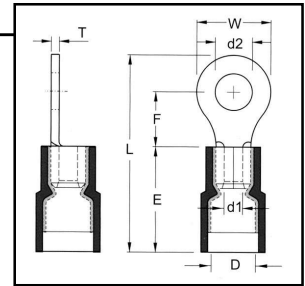
Barrel ID (d1): .091

Maximum Electrical Rating: 105°C, 600V

Barrel OD (D): .205

Material Thickness (T): .031

Barrel Length (E): .433



HOFFMAN PART NO.	STUD SIZE	DIMENSIONS (INCHES)				UL	TAPE MOUNTED REEL QTY	DIE FOR TAPE MOUNTED	HAND TOOL
		STUD DIAMETER	TONGUE WIDTH	STUD CLEARANCE	LENGTH				
		d2	W	F	L				
FND1614-3	4	.126	.260	.189	.740	Y	1000	3V1614	YNM2210D
FND1614-M3	6	.146	.260	.248	.803	Y	1000	3V1614	YNM2210D
FND1614-M4	8	.169	.260	.248	.803	Y	1000	3V1614	YNM2210D
FND1614-4	8	.169	.335	.307	.898	Y	1000	3V1614	YNM2210D
FND1614-M5	10	.209	.335	.307	.898	Y	1000	3V1614	YNM2210D
FND1614-5	10	.209	.374	.287	.898	Y	1000	3V1614	YNM2210D
FND1614-6	1/4	.252	.472	.433	1.094	Y	1000	3V1614	YNM2210D
FND1614-8	5/16	.331	.472	.433	1.094	Y	1000	3V1614	YNM2210D
FND1614-9	3/8	.413	.535	.547	1.240	Y	1000	3V1614	YNM2210D
FND1614-13	1/2	.512	.756	.630	1.433	Y	1000	3V1614	YNM2210D

1210 AWG Nylon Insulated Ring with Copper Support Sleeve

Material: Tin Plated Copper with Butted Seam

Insulation Material: Yellow 6/6 Nylon with Funnel Entry Copper Support Sleeve

Maximum Electrical Current: 50 Amps

Barrel ID(d1): .134

Maximum Electrical Rating: 105°C, 600 V

Barrel OD (D): .276

Material Thickness (T): .039

Barrel Length (E): .512

HOFFMAN PART NO.	STUD SIZE	DIMENSIONS (INCHES)				UL	TAPE MOUNTED REEL QTY	DIE FOR TAPE MOUNTED	HAND TOOL
		STUD DIAMETER	TONGUE WIDTH	STUD CLEARANCE	LENGTH				
		d2	W	F	L				
FND1210-S3	6	.146	.283	.240	.894	Y	1000	3V1210	YNM2210D
FND1210-S4	8	.169	.283	.240	.894	Y	1000	3V1210	YNM2210D
FND1210-4	8	.169	.374	.327	1.024	Y	1000	3V1210	YNM2210D
FND1210-5	10	.209	.374	.327	1.024	Y	1000	3V1210	YNM2210D
FND1210-S6	1/4	.252	.520	.354	1.146	Y	1000	3V1210	YNM2210D
FND1210-6	1/4	.252	.472	.413	1.161	Y	1000	3V1210	YNM2210D
FND1210-8	5/16	.331	.591	.531	1.339	Y	1000	3V1210	YNM2210D
FND1210-9	3/8	.413	.591	.531	1.339	Y	500	3V1210	YNM2210D
FND1210-13	1/2	.512	.756	.630	1.520	Y	NA	NA	YNM2210D

