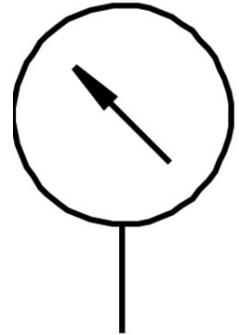


Precision pressure gauge MAP-40-6-1/8-EN

Part number: 161127

FESTO



Data sheet

Feature	Value
Display range	0 bar ... 6 bar
Display range	1 psi ... 87 psi
Symbol	00991463
Conforms to standard	EN 837-1
Pressure gauge nominal size	40
Explosion prevention and protection	Observe the information on the certificate Zone 1 (ATEX) Zone 2 (ATEX) Zone 21 (ATEX) Zone 22 (ATEX)
Structural design	Bourdon tube pressure gauge
Type of mounting	Line installation
Operating medium	Inert gas Neutral liquids
Operating pressure	0 MPa ... 0.6 MPa
Operating pressure	0 bar ... 6 bar
Operating pressure	0 psi ... 87 psi
Intermittent load factor	0.66
Measurement accuracy class	1.6
Degree of protection	IP43
Temperature of medium	-20 °C ... 60 °C
Ambient temperature	-20 °C ... 60 °C
LABS (PWIS) conformity	VDMA24364-B1/B2-L
Note on materials	RoHS-compliant
Connection position	Centered on rear side
Pneumatic connection	R1/8
Materials in contact with the media	Brass
Material of screwed plug	Brass
Housing material	PBT
Inspection window material	PS
Housing colour	Black
Product weight	60 g

Feature	Value
Information on operating and pilot media	No acetylene No oxygen
Scale	Double scale bar (außen) psi (internal)