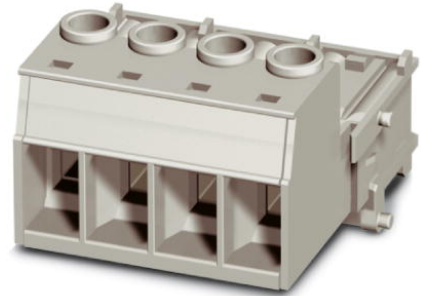


## VC-AMS 4


Order No.: 1607745



<http://eshop.phoenixcontact.de/phoenix/treeViewClick.do?UID=1607745>

Contact insert module, for panel mounting frames, with screw connection, 3-pos. + PE, 690 V / 70 A

### Commercial data

GTIN (EAN)	 4 017918 969196
sales group	D238
Pack	5 pcs.
Customs tariff	85366990
Catalog page information	Page 353 (PC-2009)

### Product notes

WEEE/RoHS-compliant since:  
12/15/2006



<http://www.download.phoenixcontact.com>  
Please note that the data given here has been taken from the online catalog. For comprehensive information and data, please refer to the user documentation. The General Terms and Conditions of Use apply to Internet downloads.

### Technical data

#### General data

Note	Plug connectors may only be connected/disconnected when under no load.
Connection method	Screw connection
	Screw connection
Tightening torque	1.2 Nm ... 1.8 Nm

Ambient temperature (operation)	-40 °C ... 100 °C
Pollution degree	3
Surge voltage category	III
Number of positions	4
Insertion/withdrawal cycles	≥ 500
Design	VC2
Conductor cross section AWG/kcmil min.	20
Conductor cross section AWG/kcmil max	6
Connection in acc. with standard	IEC / EN
Conductor cross-section	0.5 mm <sup>2</sup> ... 16 mm <sup>2</sup>
Connection cross-section AWG	20 ... 5
Stripping length of the individual wire	12 mm

**Material data**

Inflammability class acc. to UL 94	V0
Contact material	CuZn
Contact surface material	hard-silver plated
Contact carrier material	PA

**Electrical characteristics**

Rated voltage (III/3)	690 V
Rated surge voltage	6 kV
	6 kV
Rated current	70 A
	70 A

**Certificates / Approvals**

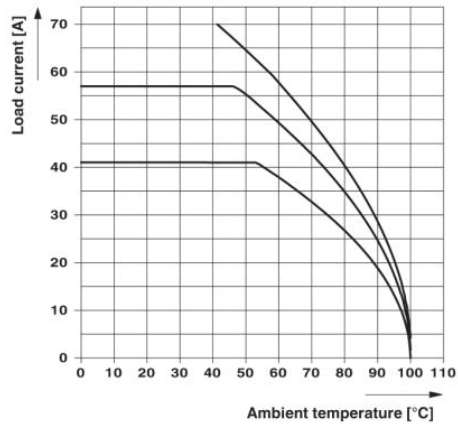
Certification CUL, UL

**Accessories**

Item	Designation	Description
<b>Plug/Adapter</b>		
1600027	CP-HCC 4	Coding profile, Color: red

## Diagrams/Drawings

### Diagram



### Dimensioned drawing

**Address**

PHOENIX CONTACT Deutschland GmbH  
Flachmarktstr. 8  
32825 Blomberg, Germany  
Phone +49 5235 3 12000  
Fax +49 5235 3 41200  
<http://www.phoenixcontact.de>



© 2011 Phoenix Contact  
Technical modifications reserved;