

# Data sheet

## 16076.2 PRS 1/5V DC



Plug-in miniature power relay, Encapsulated design with power contact, 1 CO contact, Input voltage: 5 VDC

### Business data

Article number	16076.2
Article name	PRS 1/5V DC
GTIN (EAN)	4044211171179
Packaging unit	1
Quantity unit	PC
Weight per piece (not including packaging)	13.8 g
Weight per piece (including packaging)	15.4 g
Unit of weight	G
Customs number	85364110
Country of origin	AT
Product description	Relay, encapsulated construction

# Data sheet

## 16076.2 PRS 1/5V DC

### Technical data

#### Dimensions

Length	29 mm
Width	12.7 mm
Height	15.7 mm

#### Ratings

Overvoltage category	III
Contamination degree	3

#### Input data

Working voltage	>3,5 VDC -
Drop-out voltage	0,5 VDC
Coil voltage	5 VDC -
Power consumption	0,4 W
Coil resistance	62 Ohm

#### Output data

Switching voltage / switching voltage max.	250 / 400 VAC
Continuous current max. / Inrush current max.	12 / 25 A
Contact configuration	1 CO contact
Switching capacity, max.	3000 VA
Electrical lifespan (AC1)	60x10 <sup>3</sup>
Mechanical lifespan	10x10 <sup>6</sup>

#### Materials

Contact material	AgNi 90/10
Working temperature, min.	-40 °C
Working temperature, max.	85 °C

#### Further technical data

Degree of protection	RTII
Insulation voltage coil/contact	5 kV
Response/release time	8 / 6 ms
Insulation voltage contact/contact	1 kV
Vibration resistance NO/NC	20/5 g
Pinning	3.5 mm

# Data sheet

## 16076.2 PRS 1/5V DC



---

### Technical data

---

#### Environmental Product Compliance

---

REACH Conform	yes
REACH Reference date	2023-06-14
REACH Candidate Substance Note	No
RoHS Conform	yes

---

# Data sheet

## 16076.2 PRS 1/5V DC



---

### Approvals

---

#### Standards and regulations

---

CE compliant	yes
--------------	-----

---

---

**Media**

---

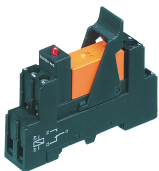
**Accessories**

**##INVERSE##CONTA-ELECTRONICS**



Relay socket base PRS, for miniature power relay with 1 CO contact, Tension-spring connection, Plug-in option for input/suppression modules, Mounting type: Mounting rail TS 35

Article number	Article name	GTIN (EAN)	Packaging unit
<u>15780.2</u>	PRS 1 Z	4044211135249	1 ST



Pre-assembled relay module PRS..., Screw connection, Consisting of: relay socket base, power contact relay, pluggable display/suppression module and holding clip, 1 CO contact, Input voltage: 5 VDC

Article number	Article name	GTIN (EAN)	Packaging unit
<u>16077.2</u>	PRSU 1/5V DC	4044211171162	1 ST



Pre-assembled relay module PRS..., Screw connection, Consisting of: relay socket base, power contact relay, pluggable display/suppression module and holding clip, 1 CO contact, Input voltage: 5 VDC

Article number	Article name	GTIN (EAN)	Packaging unit
<u>16077.2</u>	PRSU 1/5V DC	4044211171162	1 ST