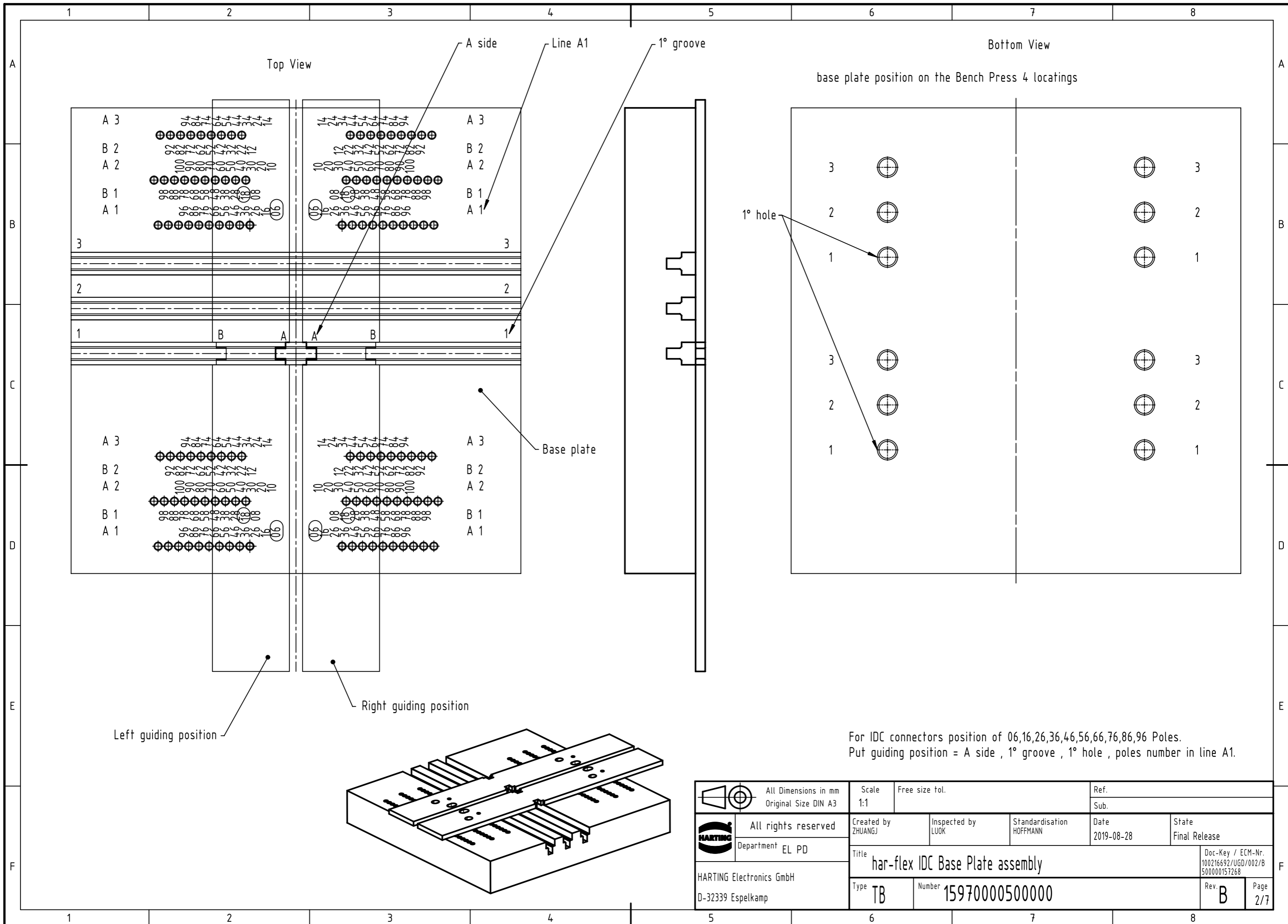
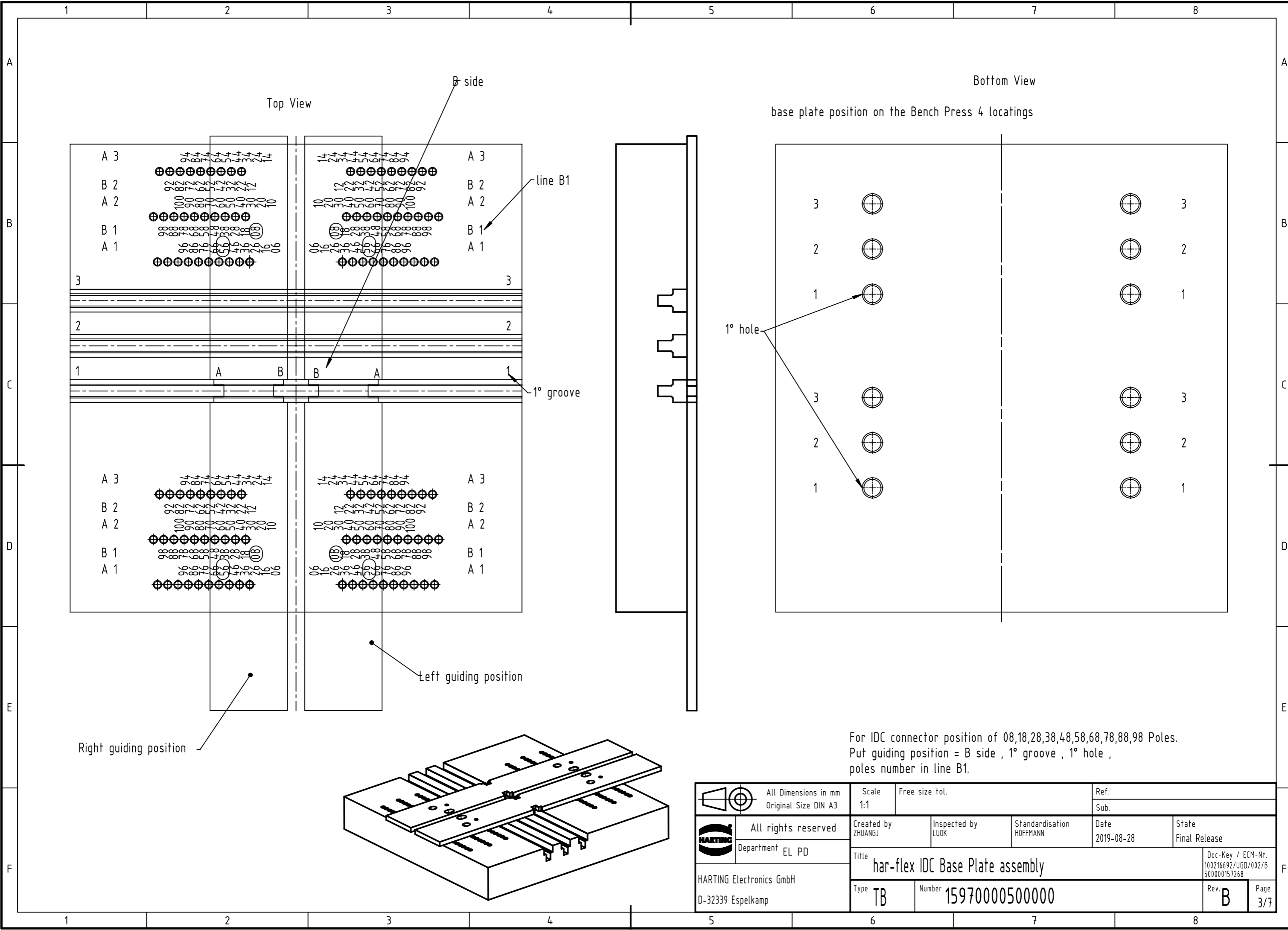


	All rights reserved Department EL PD	All Dimensions in mm Original Size DIN A3		Scale 1:1	Free size tol.	Ref. Sub.
		Created by ZHUANGJ	Inspected by LUOK	Standardisation HOFFMANN	Date 2019-08-28	State Final Release
HARTING Electronics GmbH D-32339 Espelkamp		Title har-flex IDC Base Plate assembly			Doc-Key / ECM-Nr. 100216692/UGD/002/B 500000157268	
		Type TB	Number 15970000500000		Rev. B	Page 1/7



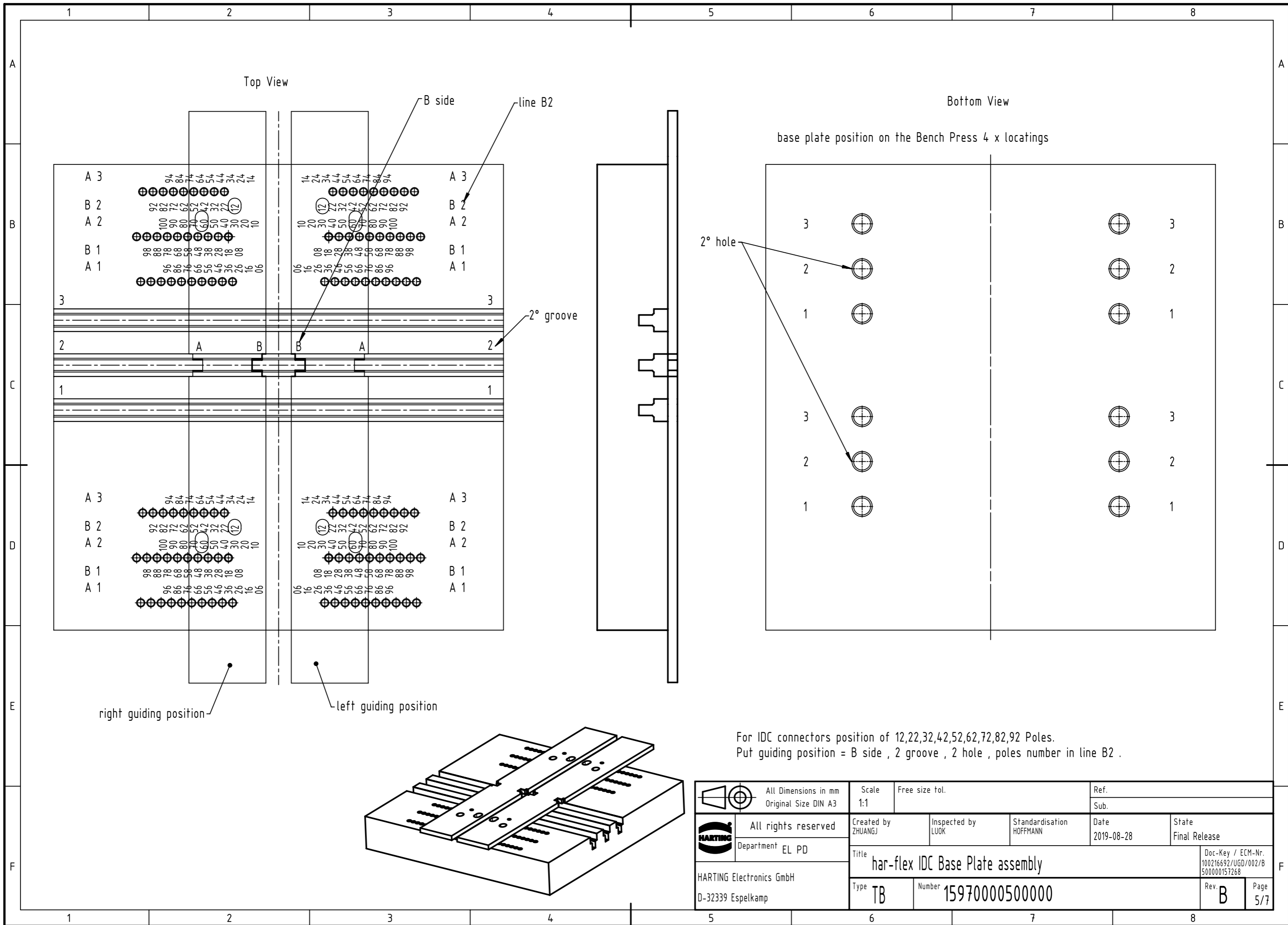
For IDC connectors position of 06,16,26,36,46,56,66,76,86,96 Poles.
Put guiding position = A side , 1° groove , 1° hole , poles number in line A1.

	All rights reserved Department EL PD HARTING Electronics GmbH D-32339 Espelkamp	All Dimensions in mm Original Size DIN A3		Scale 1:1	Free size tol.	Ref. Sub.	
		Created by ZHUANGJ	Inspected by LUOK	Standardisation HOFFMANN	Date 2019-08-28	State Final Release	Doc-Key / ECM-Nr. 100216692/UGD/002/B 500000157268
		Title har-flex IDC Base Plate assembly				Rev. B	
		Type TB	Number 15970000500000			Page 2/7	



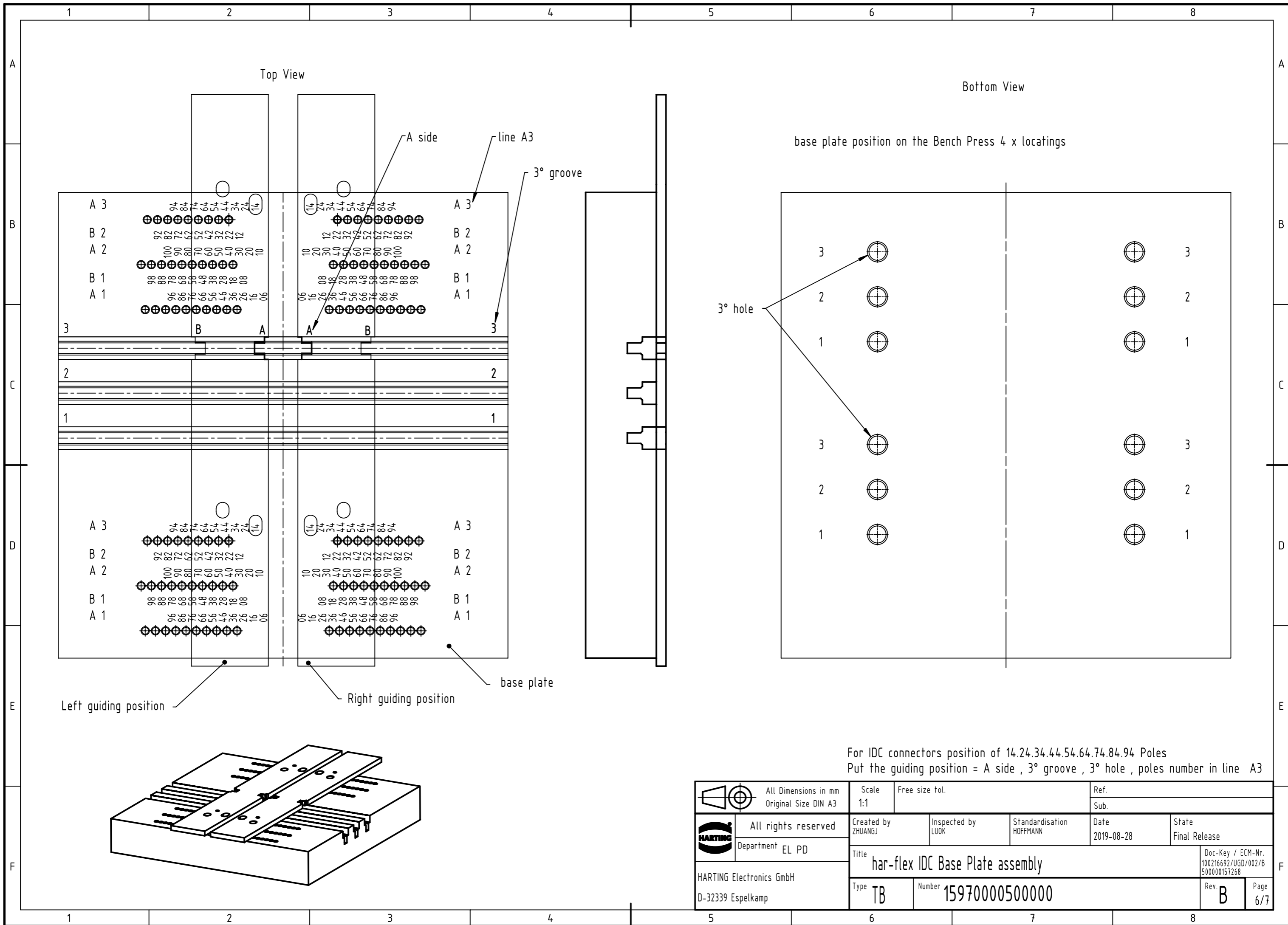
For IDC connector position of 08,18,28,38,48,58,68,78,88,98 Poles.
 Put guiding position = B side , 1° groove , 1° hole ,
 poles number in line B1.

	All Dimensions in mm Original Size DIN A3		Scale 1:1	Free size tol.		Ref.
	All rights reserved Department EL PD		Created by ZHUANGJ	Inspected by LUOK	Standardisation HOFFMANN	Date 2019-08-28
HARTING Electronics GmbH D-32339 Espelkamp		Title har-flex IDC Base Plate assembly			Doc-Key / ECM-Nr. 100216692/UGD/002/B 500000157268	
		Type TB	Number 15970000500000		Rev. B	Page 3/7



For IDC connectors position of 12,22,32,42,52,62,72,82,92 Poles.
Put guiding position = B side , 2 groove , 2 hole , poles number in line B2 .

	All Dimensions in mm Original Size DIN A3		Scale 1:1	Free size tol.		Ref.	
	All rights reserved Department EL PD		Created by ZHUANGJ	Inspected by LUOK	Standardisation HOFFMANN	Date 2019-08-28	State Final Release
HARTING Electronics GmbH D-32339 Espelkamp		Title har-flex IDC Base Plate assembly				Doc-Key / ECM-Nr. 100216692/UGD/002/B 500000157268	
		Type TB	Number 15970000500000		Rev. B	Page 5/7	



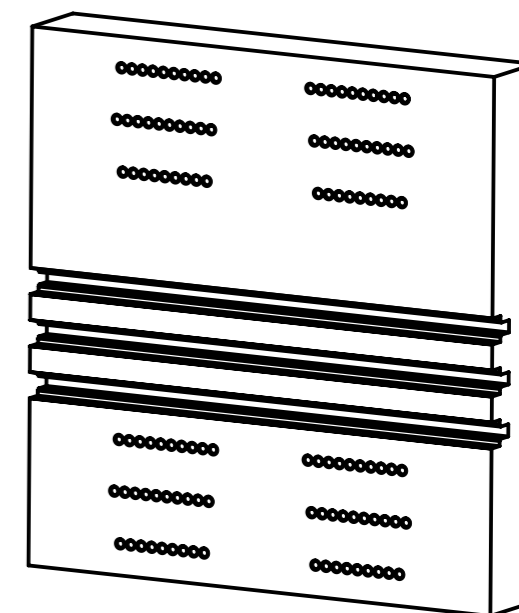
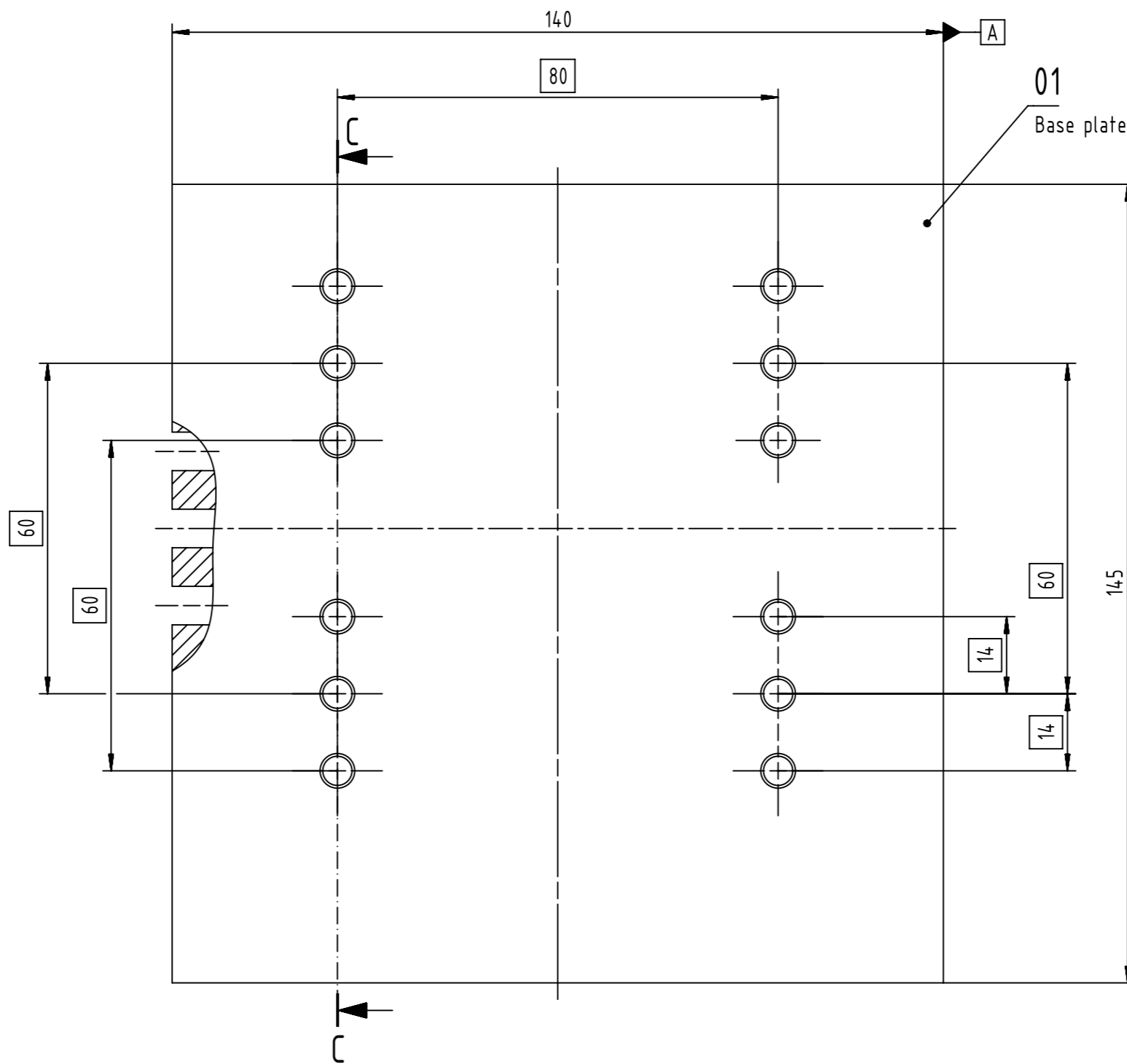
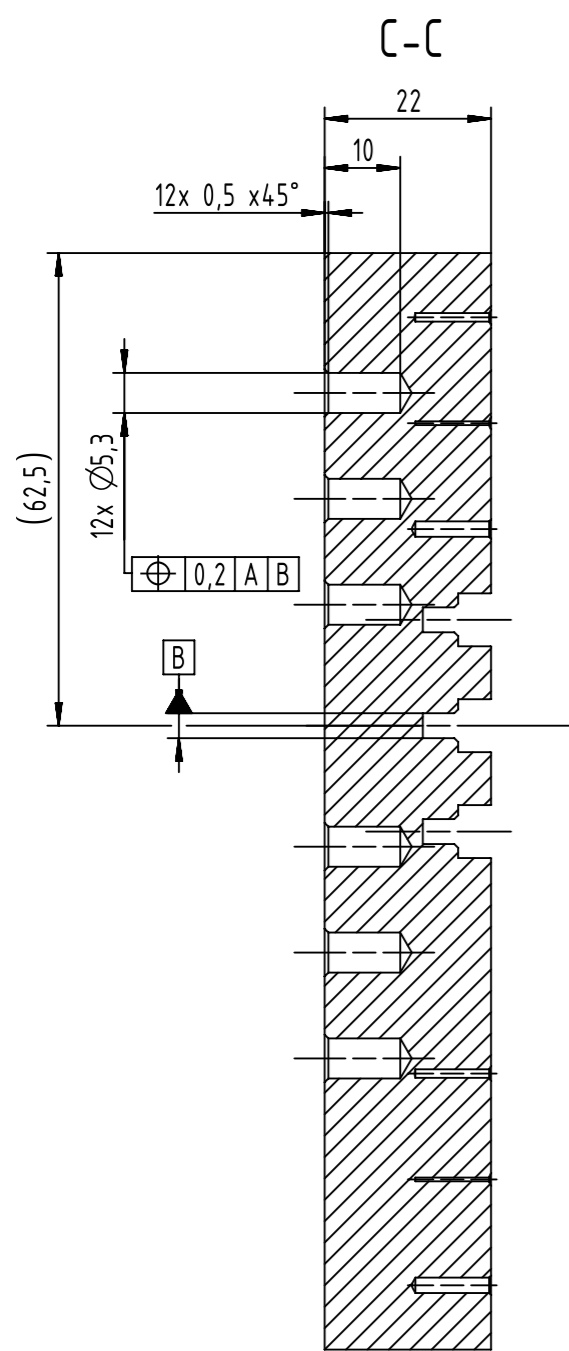
Top View

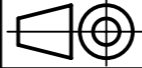
Bottom View

base plate position on the Bench Press 4 x locations

For IDC connectors position of 14.24.34.44.54.64.74.84.94 Poles
Put the guiding position = A side , 3° groove , 3° hole , poles number in line A3

	All rights reserved		Created by ZHUANGJ		Inspected by LUOK	Standardisation HOFFMANN	Date 2019-08-28	State Final Release
	Department EL PD		Title har-flex IDC Base Plate assembly			Doc-Key / ECM-Nr. 100216692/UGD/002/B 500000157268		
HARTING Electronics GmbH D-32339 Espelkamp		Type TB	Number 15970000500000			Rev. B	Page 6/7	



	All rights reserved Department EL PD HARTING Electronics GmbH D-32339 Espelkamp	All Dimensions in mm Original Size DIN A3		Scale 1:1	Free size tol.	Ref. Sub.
		Created by ZHUANGJ	Inspected by LUOK	Standardisation HOFFMANN	Date 2019-08-28	State Final Release
		Title har-flex IDC Base Plate assembly				Doc-Key / ECM-Nr. 100216692/UGD/002/B 500000157268
		Type TB	Number 15970000500000			Rev. B
						Page 7/7