

Data sheet

15779.2 AQI/PRS/8 BK



External cross-connector insulated, for relay socket base PRS 1 and PRS 2/6-pole, can be shortened,
Voltage: 250 V, Current 10 A

Business data

Article number	15779.2
Article name	AQI/PRS/8 BK
GTIN (EAN)	4044211134006
Packaging unit	20
Quantity unit	PC
Weight per piece (not including packaging)	5.1 g
Weight per piece (including packaging)	5.22 g
Unit of weight	G
Customs number	85389099
Country of origin	PL
Product description	Insulated external cross-connector

Technical data

Connection data

No. of poles	8
--------------	---

Materials

Insulation housing	Polyamide 6.6
Flammability class UL 94	V-2
Working temperature, min.	-40 °C
Working temperature, max.	105 °C

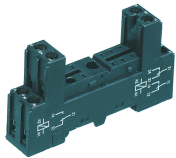
Environmental Product Compliance

REACH Conform	yes
REACH Reference date	2023-06-14
REACH Candidate Substance Note	No
RoHS Conform	yes

Media

Accessories

##INVERSE##CONTA-ELECTRONICS



Relay socket base PRS, for miniature power relay with 2 CO contacts, Screw connection, Plug-in option for input/suppression modules, Mounting type: Mounting rail TS 35

Article number	Article name	GTIN (EAN)	Packaging unit
<u>15136.2</u>	PRS 2	4044211046194	1 ST



Relay socket base PRS, for miniature power relay with 2 CO contacts, Screw connection, Plug-in option for input/suppression modules, Mounting type: Mounting rail TS 35

Article number	Article name	GTIN (EAN)	Packaging unit
<u>15320.2</u>	PRS 2 G	4044211047115	1 ST



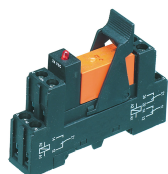
Pre-assembled relay module PRSXT, Screw connection, Consisting of: relay socket, holding clip and power contact relay with test button and status LED. 2 CO contacts, Input voltage: 24 VDC

Article number	Article name	GTIN (EAN)	Packaging unit
<u>16020.2</u>	PRSXT 2G/24V DC	4044211145255	10 ST



Pre-assembled relay module PRSXT, Screw connection, Consisting of: relay socket, holding clip and power contact relay with test button and status LED. 2 CO contacts, Input voltage: 230 VAC

Article number	Article name	GTIN (EAN)	Packaging unit
<u>16022.2</u>	PRSXT 2G/230V AC	4044211145279	10 ST



Pre-assembled relay module PRS..., Screw connection, Consisting of: relay socket base, power contact relay, pluggable display/suppression module and holding clip, 2 CO contacts, Input voltage: 24 VAC

Article number	Article name	GTIN (EAN)	Packaging unit
<u>15166.2</u>	PRSU 2/24V AC	4044211046453	10 ST

##INVERSE##CONTA-ELECTRONICS



Pre-assembled relay module PRSXT, Tension-spring connection, Consisting of: relay socket, holding clip and power contact relay with test button and status LED. 2 CO contacts, Input voltage: 24 VAC

Article number	Article name	GTIN (EAN)	Packaging unit
<u>16024.2</u>	PRSXT 2Z/24V AC	4044211145293	1 ST



Pre-assembled relay module PRSU..., Screw connection, Consisting of: relay socket base, power contact relay, pluggable display/suppression module and holding clip, 2 CO contacts, Input voltage: 24 VDC

Article number	Article name	GTIN (EAN)	Packaging unit
<u>15233.2</u>	PRSU 2G/24V DC	4044211046736	10 ST



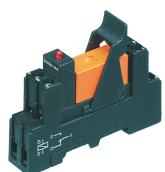
Pre-assembled relay module PRSU..., Screw connection, Consisting of: relay socket base, power contact relay, pluggable display/suppression module and holding clip, 2 CO contacts, Input voltage: 24 VAC

Article number	Article name	GTIN (EAN)	Packaging unit
<u>15166.2</u>	PRSU 2/24V AC	4044211046453	10 ST



Pre-assembled relay module PRSXT, Screw connection, Consisting of: relay socket, holding clip and power contact relay with test button and status LED. 2 CO contacts, Input voltage: 24 VDC

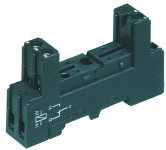
Article number	Article name	GTIN (EAN)	Packaging unit
<u>16017.2</u>	PRSXT 2/24V DC	4044211145224	10 ST



Pre-assembled relay module PRSU..., Screw connection, Consisting of: relay socket base, power contact relay, pluggable display/suppression module and holding clip, 1 CO contact, Input voltage: 12 VDC

Article number	Article name	GTIN (EAN)	Packaging unit
<u>15163.2</u>	PRSU 1/12V DC	4044211046422	10 ST

##INVERSE##CONTA-ELECTRONICS



Relay socket base PRS, for miniature power relay with 1 CO contact, Screw connection, Plug-in option for input/suppression modules, Mounting type: Mounting rail TS 35

Article number	Article name	GTIN (EAN)	Packaging unit
<u>15135.2</u>	PRS 1	4044211046187	1 ST



Pre-assembled relay module PRS..., Screw connection, Consisting of: relay socket base, power contact relay, pluggable display/suppression module and holding clip, 2 CO contacts, Input voltage: 115 VAC

Article number	Article name	GTIN (EAN)	Packaging unit
<u>15413.2</u>	PRSU 2/115V AC	4044211080792	10 ST



Pre-assembled relay module PRS..., Screw connection, Consisting of: relay socket base, power contact relay, pluggable display/suppression module and holding clip, 2 CO contacts, Input voltage: 48 VAC

Article number	Article name	GTIN (EAN)	Packaging unit
<u>15948.2</u>	PRSU 2/48V AC	4044211141905	10 ST



Pre-assembled relay module PRS..., Screw connection, Consisting of: relay socket base, power contact relay, pluggable display/suppression module and holding clip, 2 CO contacts, Input voltage: 48 VAC

Article number	Article name	GTIN (EAN)	Packaging unit
<u>15948.2</u>	PRSU 2/48V AC	4044211141905	10 ST



Pre-assembled relay module PRS..., Screw connection, Consisting of: relay socket base with multi-layer gold contact, pluggable display/suppression module and holding clip, 2 CO contacts, Input voltage: 24 VDC

Article number	Article name	GTIN (EAN)	Packaging unit
<u>16125.2</u>	PRSU 2/24V DC Au	4044211178192	1 ST

##INVERSE##CONTA-ELECTRONICS



Pre-assembled relay module PRS..., Screw connection, Consisting of: relay socket base, power contact relay, pluggable display/suppression module and holding clip, 2 CO contacts, Input voltage: 12 VDC

Article number	Article name	GTIN (EAN)	Packaging unit
<u>15165.2</u>	PRSU 2/12V DC	4044211046446	10 ST



Pre-assembled relay module PRS..., Screw connection, Consisting of: relay socket base, power contact relay, pluggable display/suppression module and holding clip, 2 CO contacts, Input voltage: 230 VAC

Article number	Article name	GTIN (EAN)	Packaging unit
<u>15172.2</u>	PRSU 2/230V AC	4044211046491	10 ST



Pre-assembled relay module PRS..., Screw connection, Consisting of: relay socket base, power contact relay, pluggable display/suppression module and holding clip, 2 CO contacts, Input voltage: 24 VAC

Article number	Article name	GTIN (EAN)	Packaging unit
<u>15385.2</u>	PRSU 2G/24V AC	4044211080815	1 ST



Pre-assembled relay module PRS..., Screw connection, Consisting of: relay socket base, power contact relay, pluggable display/suppression module and holding clip, 1 CO contact, Input voltage: 12 VDC

Article number	Article name	GTIN (EAN)	Packaging unit
<u>15163.2</u>	PRSU 1/12V DC	4044211046422	10 ST



Pre-assembled relay module PRS..., Screw connection, Consisting of: relay socket base, power contact relay, pluggable display/suppression module and holding clip, 2 CO contacts, Input voltage: 12 VDC

Article number	Article name	GTIN (EAN)	Packaging unit
<u>15414.2</u>	PRSU 2G/12V DC	4044211080808	1 ST

##INVERSE##CONTA-ELECTRONICS



Pre-assembled relay module PRS..., Screw connection, Consisting of: relay socket base, power contact relay, pluggable display/suppression module and holding clip, 2 CO contacts, Input voltage: 48 VDC

Article number	Article name	GTIN (EAN)	Packaging unit
<u>15415.2</u>	PRSU 2G/48V DC	4044211080822	1 ST



Pre-assembled relay module PRS..., Screw connection, Consisting of: relay socket base, power contact relay, pluggable display/suppression module and holding clip, 2 CO contacts, Input voltage: 110 VDC

Article number	Article name	GTIN (EAN)	Packaging unit
<u>15722.2</u>	PRSU 2/110V DC	4044211138424	1 ST



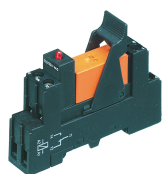
Pre-assembled relay module PRS..., Screw connection, Consisting of: relay socket base, power contact relay, pluggable display/suppression module and holding clip, 2 CO contacts, Input voltage: 110 VDC

Article number	Article name	GTIN (EAN)	Packaging unit
<u>15723.2</u>	PRSU 2G/110V DC	4044211138431	1 ST



Pre-assembled relay module PRS..., Screw connection, Consisting of: relay socket base, power contact relay, pluggable display/suppression module and holding clip, 1 CO contact, Input voltage: 12 VDC

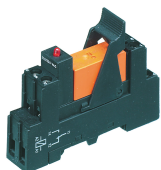
Article number	Article name	GTIN (EAN)	Packaging unit
<u>15163.2</u>	PRSU 1/12V DC	4044211046422	10 ST



Pre-assembled relay module PRS..., Screw connection, Consisting of: relay socket base, power contact relay, pluggable display/suppression module and holding clip, 1 CO contact, Input voltage: 24 VAC

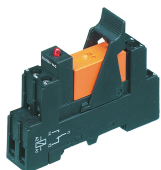
Article number	Article name	GTIN (EAN)	Packaging unit
<u>15164.2</u>	PRSU 1/24V AC	4044211046439	1 ST

##INVERSE##CONTA-ELECTRONICS



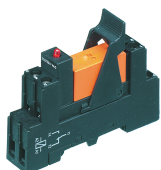
Pre-assembled relay module PRS..., Screw connection, Consisting of: relay socket base, power contact relay, pluggable display/suppression module and holding clip, 1 CO contact, Input voltage: 24 VAC

Article number	Article name	GTIN (EAN)	Packaging unit
<u>15164.2</u>	PRSU 1/24V AC	4044211046439	1 ST



Pre-assembled relay module PRS..., Screw connection, Consisting of: relay socket base, power contact relay, pluggable display/suppression module and holding clip, 1 CO contact, Input voltage: 24 VDC

Article number	Article name	GTIN (EAN)	Packaging unit
<u>15419.2</u>	PRSU 1L/24V DC	4044211080761	1 ST



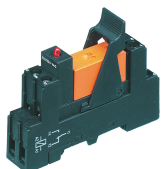
Pre-assembled relay module PRS..., Screw connection, Consisting of: relay socket base, power contact relay, pluggable display/suppression module and holding clip, 1 CO contact, Input voltage: 115 VAC

Article number	Article name	GTIN (EAN)	Packaging unit
<u>15418.2</u>	PRSU 1/115V AC	4044211080754	1 ST



Pre-assembled relay module PRS..., Screw connection, Consisting of: relay socket base, power contact relay, pluggable display/suppression module and holding clip, 2 CO contacts, Input voltage: 48 VDC

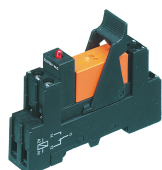
Article number	Article name	GTIN (EAN)	Packaging unit
<u>15415.2</u>	PRSU 2G/48V DC	4044211080822	1 ST



Pre-assembled relay module PRS..., Screw connection, Consisting of: relay socket base, power contact relay, pluggable display/suppression module and holding clip, 1 CO contact, Input voltage: 115 VAC

Article number	Article name	GTIN (EAN)	Packaging unit
<u>15418.2</u>	PRSU 1/115V AC	4044211080754	1 ST

##INVERSE##CONTA-ELECTRONICS

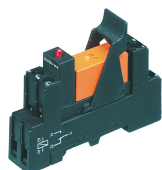


Pre-assembled relay module PRSU..., Screw connection, Consisting of: relay socket base, power contact relay, pluggable display/suppression module and holding clip, 1 CO contact, Input voltage: 110 VDC

Article number	Article name	GTIN (EAN)	Packaging unit
<u>15721.2</u>	PRSU 1/110V DC	4044211138417	1 ST

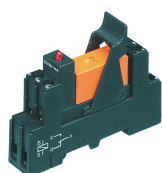
Pre-assembled relay module PRSU..., Screw connection, Consisting of: relay socket base, power contact relay, pluggable display/suppression module and holding clip, 1 CO contact, Input voltage: 24 VDC

Article number	Article name	GTIN (EAN)	Packaging unit
<u>16400.2</u>	PRSU 1G/24 V DC-16A	4044211216511	1 ST



Pre-assembled relay module PRSU..., Screw connection, Consisting of: relay socket base, power contact relay, pluggable display/suppression module and holding clip, 1 CO contact, Input voltage: 115 VAC

Article number	Article name	GTIN (EAN)	Packaging unit
<u>15418.2</u>	PRSU 1/115V AC	4044211080754	1 ST



Pre-assembled relay module PRSU..., Screw connection, Consisting of: relay socket base, power contact relay, pluggable display/suppression module and holding clip, 1 CO contact, Input voltage: 115 VAC

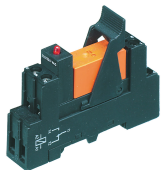
Article number	Article name	GTIN (EAN)	Packaging unit
<u>15418.2</u>	PRSU 1/115V AC	4044211080754	1 ST



Pre-assembled relay module PRSU..., Screw connection, Consisting of: relay socket base, power contact relay, pluggable display/suppression module and holding clip, 1 CO contact, Input voltage: 230 VAC

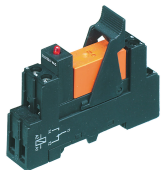
Article number	Article name	GTIN (EAN)	Packaging unit
<u>15170.2</u>	PRSU 1/230V AC	4044211046477	10 ST

##INVERSE##CONTA-ELECTRONICS



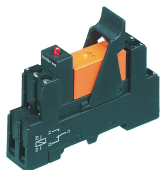
Pre-assembled relay module PRSU..., Screw connection, Consisting of: relay socket base, power contact relay, pluggable display/suppression module and holding clip, 1 CO contact, Input voltage: 24 VDC

Article number	Article name	GTIN (EAN)	Packaging unit
<u>15419.2</u>	PRSU 1L/24V DC	4044211080761	1 ST



Pre-assembled relay module PRSU..., Screw connection, Consisting of: relay socket base, power contact relay, pluggable display/suppression module and holding clip, 1 CO contact, Input voltage: 5 VDC

Article number	Article name	GTIN (EAN)	Packaging unit
<u>16077.2</u>	PRSU 1/5V DC	4044211171162	1 ST



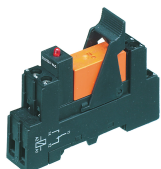
Pre-assembled relay module PRSU..., Screw connection, Consisting of: relay socket base, power contact relay, pluggable display/suppression module and holding clip, 1 CO contact, Input voltage: 24 VDC

Article number	Article name	GTIN (EAN)	Packaging unit
<u>15169.2</u>	PRSU 1/24V DC	4044211046460	10 ST



Pre-assembled relay module PRSU..., Screw connection, Consisting of: relay socket base, power contact relay, pluggable display/suppression module and holding clip, 1 CO contact, Input voltage: 60 VDC

Article number	Article name	GTIN (EAN)	Packaging unit
<u>15720.2</u>	PRSU 1/60V DC	4044211138400	1 ST



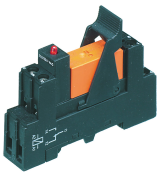
Pre-assembled relay module PRSU..., Screw connection, Consisting of: relay socket base, power contact relay, pluggable display/suppression module and holding clip, 1 CO contact, Input voltage: 110 VDC

Article number	Article name	GTIN (EAN)	Packaging unit
<u>15721.2</u>	PRSU 1/110V DC	4044211138417	1 ST

##INVERSE##CONTA-ELECTRONICS

Pre-assembled relay module PRS..., Screw connection, Consisting of: relay socket base, power contact relay, pluggable display/suppression module and holding clip, 1 CO contact, Input voltage: 24 VDC

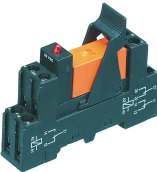
Article number	Article name	GTIN (EAN)	Packaging unit
<u>16400.2</u>	PRSU 1G/24 V DC-16A	4044211216511	1 ST



Pre-assembled relay module PRS..., Screw connection, Consisting of: relay socket base, power contact relay, pluggable display/suppression module and holding clip, 1 CO contact, Input voltage: 115 VAC

Article number	Article name	GTIN (EAN)	Packaging unit
<u>15418.2</u>	PRSU 1/115V AC	4044211080754	1 ST

##INVERSE##CONTA-ELECTRONICS



Pre-assembled relay module PRS..., Screw connection, Consisting of: relay socket base, power contact relay, pluggable display/suppression module and holding clip, 2 CO contacts, Input voltage: 230 VAC

Article number	Article name	GTIN (EAN)	Packaging unit
<u>15172.2</u>	PRSU 2/230V AC	4044211046491	10 ST