

JENNY-8X1-20

~20° beam. 8X1 variant.

SPECIFICATION:

Dimensions	280.0 x 35.0 mm
Height	14.5 mm
Fastening	glue, pin
ROHS compliant	yes ⓘ

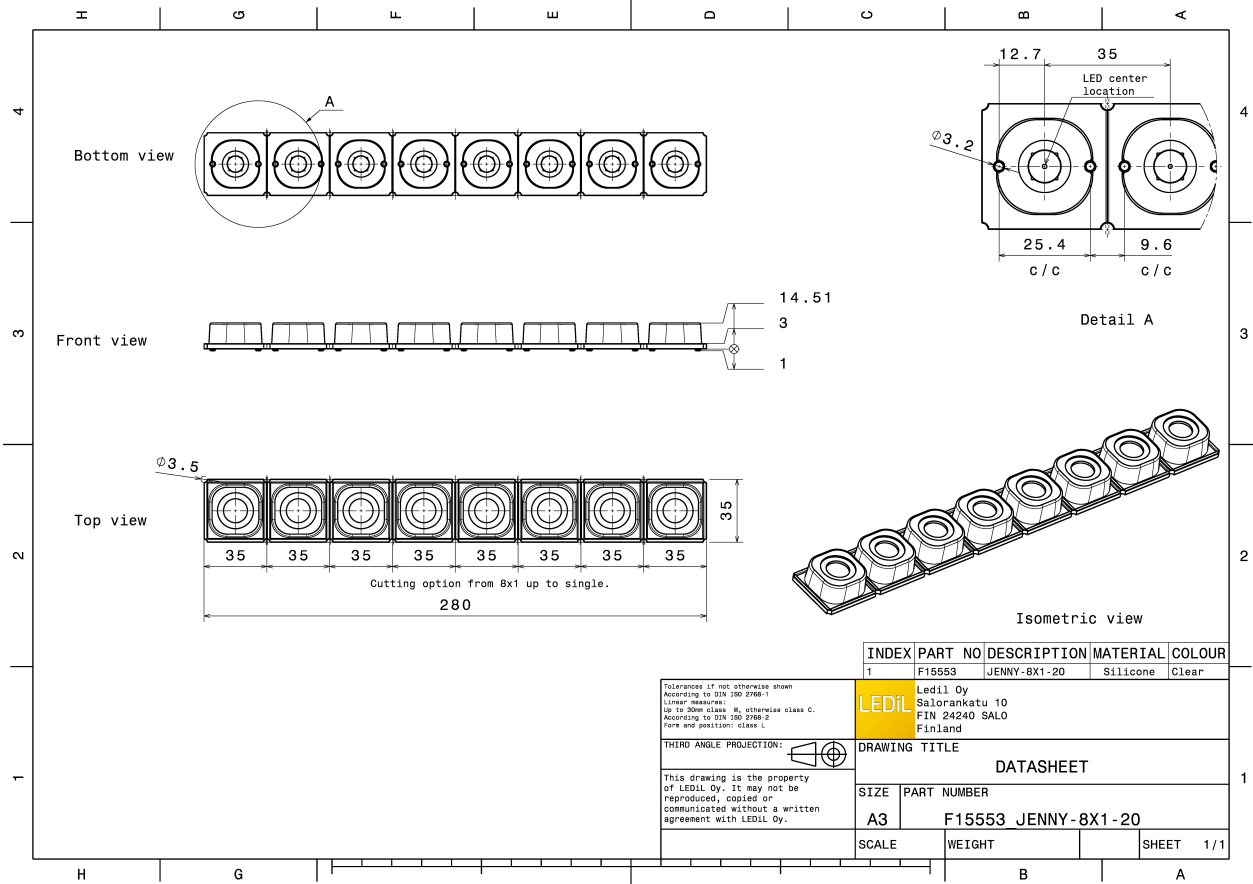
MATERIALS:

Component	Type	Material	Colour	Finish
JENNY-8X1-20	Multi-lens	Silicone	clear	



ORDERING INFORMATION:

Component	Qty in box	MOQ	MPQ	Box weight (kg)
F15553_JENNY-8X1-20 » Box size: 398 x 298 x 265 mm	150	20	10	10.9



INDEX	PART NO	DESCRIPTION	MATERIAL	COLOUR
1	F15553	JENNY-8X1-20	Silicone	Clear

Tolerances if not otherwise shown
According to DIN 150 2780-1
Linear measures:
Up to 20mm class M, otherwise class C.
According to DIN 150 2780-2
Form and position: class L

LEDiL	Ledil Oy Salorankatu 10 FIN 24240 SALO Finland
--------------	---

THIRD ANGLE PROJECTION:

DRAWING TITLE	
DATASHEET	

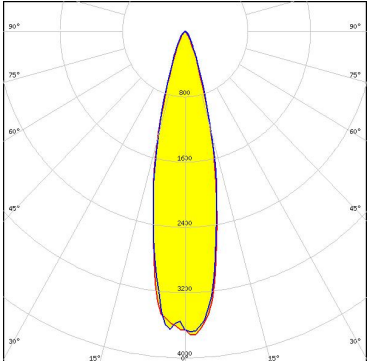
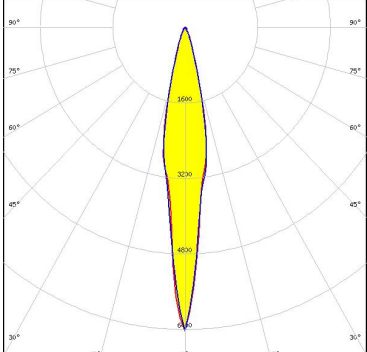
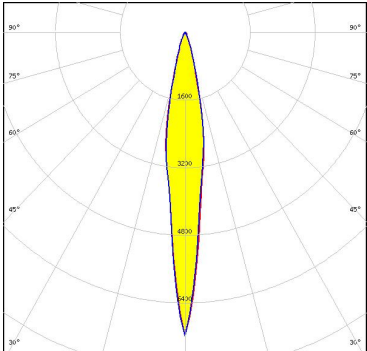
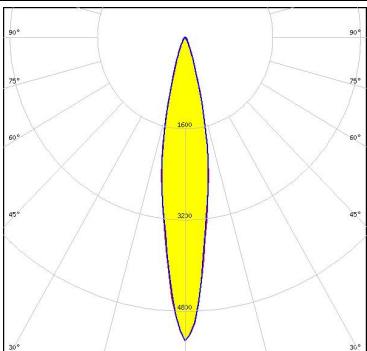
This drawing is the property of LEDiL Oy. It may not be reproduced, copied or communicated without a written agreement with LEDiL Oy.

SIZE	PART NUMBER
A3	F15553 JENNY-8X1-20

SCALE	WEIGHT	SHEET	1/1
-------	--------	-------	-----

See also our general installation guide: www.ledil.com/installation_guide

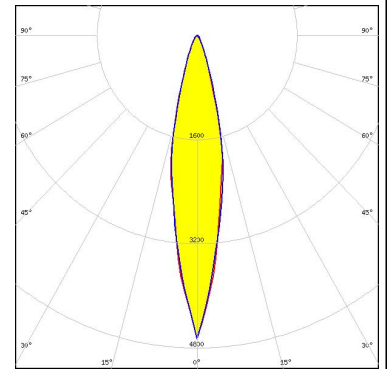
OPTICAL RESULTS (SIMULATED):

<p>CREE LEDs</p> <p>LED: MHD-E/G FWHM / FWTM: 24.0° / 47.0° Efficiency: 95 % Peak intensity: 3.7 cd/lm LEDs/each optic: 1 Light colour: White Required components:</p>	
<p>CREE LEDs</p> <p>LED: MK-R FWHM / FWTM: 14.0° / 36.0° Efficiency: 96 % Peak intensity: 6.4 cd/lm LEDs/each optic: 1 Light colour: White Required components:</p>	
<p>CREE LEDs</p> <p>LED: XHP50 FWHM / FWTM: 14.0° / 34.0° Efficiency: 91 % Peak intensity: 7.2 cd/lm LEDs/each optic: 1 Light colour: White Required components:</p>	
<p>CREE LEDs</p> <p>LED: XHP50.2 FWHM / FWTM: 18.0° / 38.0° Efficiency: 91 % Peak intensity: 5.3 cd/lm LEDs/each optic: 1 Light colour: White Required components:</p>	

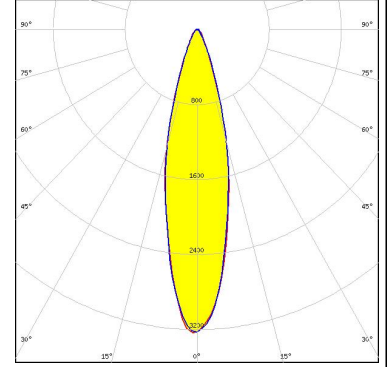
OPTICAL RESULTS (SIMULATED):



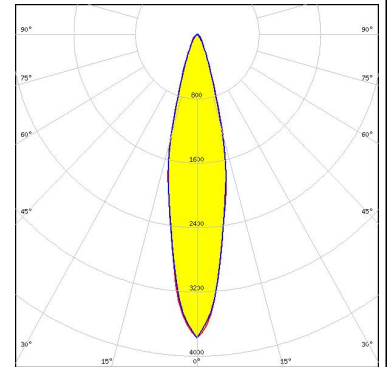
LED XHP70
 FWHM / FWTM 20.0° / 43.0°
 Efficiency 96 %
 Peak intensity 4.7 cd/lm
 LEDs/each optic 1
 Light colour White
 Required components:



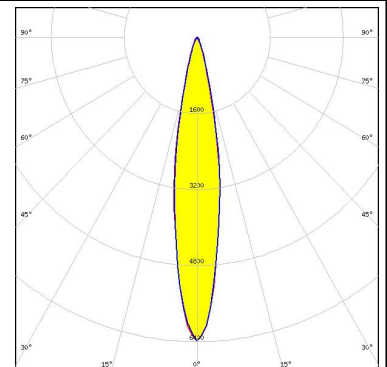
LED XHP70.2
 FWHM / FWTM 26.0° / 50.0°
 Efficiency 95 %
 Peak intensity 3.2 cd/lm
 LEDs/each optic 1
 Light colour White
 Required components:



LED XHP70.3 HD
 FWHM / FWTM 23.0° / 46.0°
 Efficiency 94 %
 Peak intensity 3.8 cd/lm
 LEDs/each optic 1
 Light colour White
 Required components:



LED XHP70.3 HI
 FWHM / FWTM 18.0° / 36.0°
 Efficiency 95 %
 Peak intensity 6.4 cd/lm
 LEDs/each optic 1
 Light colour White
 Required components:



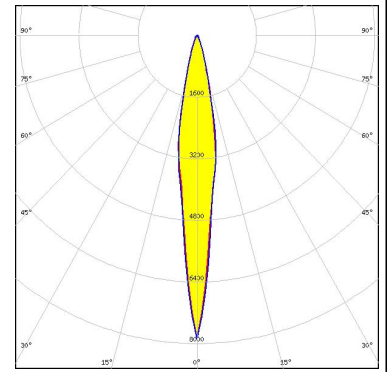
OPTICAL RESULTS (SIMULATED):

<p>LUMILEDS</p> <p>LED: LUXEON 7070 FWHM / FWTM: 24.0° / 44.0° Efficiency: 91 % Peak intensity: 4.1 cd/lm LEDs/each optic: 1 Light colour: White Required components:</p>	
<p>LUMILEDS</p> <p>LED: LUXEON M/MX FWHM / FWTM: 16.0° / 37.0° Efficiency: 96 % Peak intensity: 6.3 cd/lm LEDs/each optic: 1 Light colour: White Required components:</p>	
<p>NICHIA</p> <p>LED: NFMW48xA FWHM / FWTM: 18.0° / 34.0° Efficiency: 94 % Peak intensity: 7.1 cd/lm LEDs/each optic: 1 Light colour: White Required components: C14436_JENNY-HLD-A-BLK</p>	
<p>OSRAM <small>Opto Semiconductors</small></p> <p>LED: Duris S10 FWHM / FWTM: 21.0° / 41.0° Efficiency: 96 % Peak intensity: 5.1 cd/lm LEDs/each optic: 1 Light colour: White Required components:</p>	

OPTICAL RESULTS (SIMULATED):

OSRAM
Opto Semiconductors

LED	OSCONIQ P 7070
FWHM / FWTM	13.0° / 34.0°
Efficiency	96 %
Peak intensity	7.9 cd/lm
LEDs/each optic	1
Light colour	White
Required components:	



GENERAL INFORMATION:

NOTE: The typical beam angle will be changed by different color, chip size and chip position tolerance. The typical total beam angle is the full angle measured where the luminous intensity is half of the peak value.

MATERIALS:

As part of our continuous research and improvement processes, and to ensure the best possible quality and availability of our products, LEDiL reserves the right to change material grades without notice.

PRODUCT DATA USER AGREEMENT AND DISCLAIMER:

The measured data in the provided downloadable LEDiL Product Datasheets and Mechanical 2D-Drawings is rounded and provided as reference for planning. LEDiL Oy's optical specifications have been verified by conducting performance testing of the products in accordance with the company's quality system. The reported data are averaged results of multiple measurements with typical variation. LEDiL Oy reserves the right to without prior notification make changes and improvements to its products.

LEDiL Oy assumes neither warranty, nor guarantee nor any other liability of any kind for the contents and correctness of the provided data. The provided data has been generated with highest diligence but the provided data may in reality not represent the complete possible variation range of all intrinsic parameters. Therefore, in certain cases a deviation from the provided data could occur.

LEDiL Oy reserves the right to undertake technical changes of its products without further notification which could lead to changes in the provided data. LEDiL Oy assumes no liability of any kind for the possible deviation from any provided data or any other damage resulting from the usage of the provided data.

The user agrees to this disclaimer and user agreement with the download or usage of the provided files.

LEDiL Oy

Joensuunkatu 13
FI-24240 SALO
Finland

LEDiL Inc.

228 West Page Street
Suite D
Sycamore IL 60178
USA

Ledil Optics Technology (Shenzhen) Co., Ltd.

405 , Block B
Casic Motor Building
Shenzhen 518057
P.R.CHINA

Local sales and technical support

[www.ledil.com/
where_to_buy](http://www.ledil.com/where_to_buy)

Shipping locations

Salo, Finland
Hong Kong, China

Distribution Partners

[www.ledil.com/
where_to_buy](http://www.ledil.com/where_to_buy)