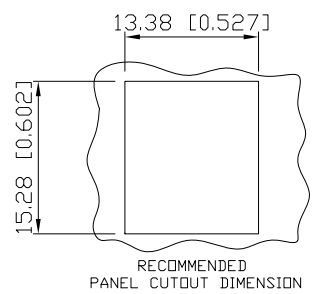
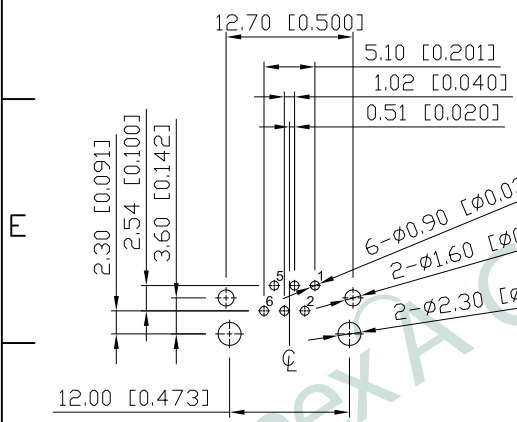
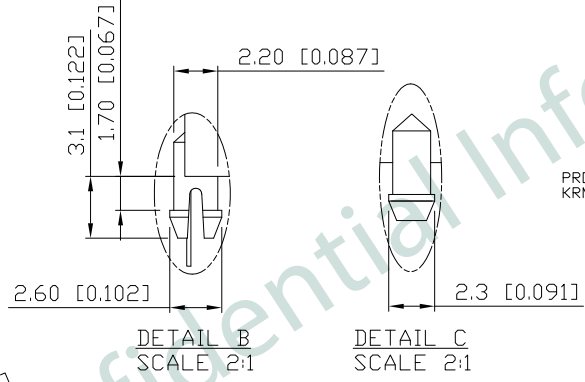
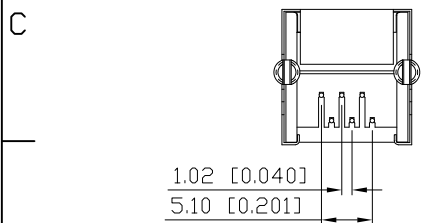
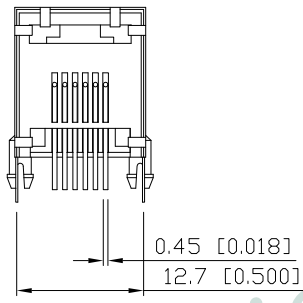
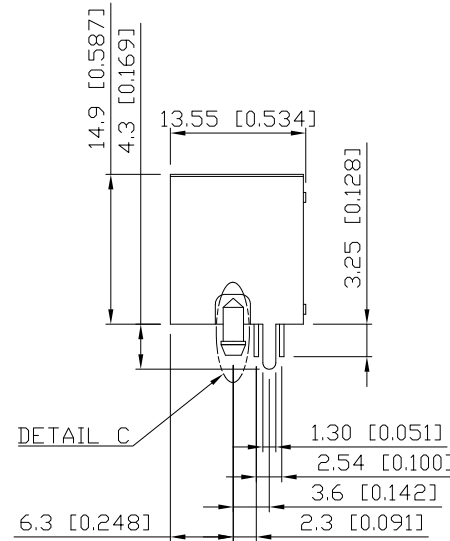
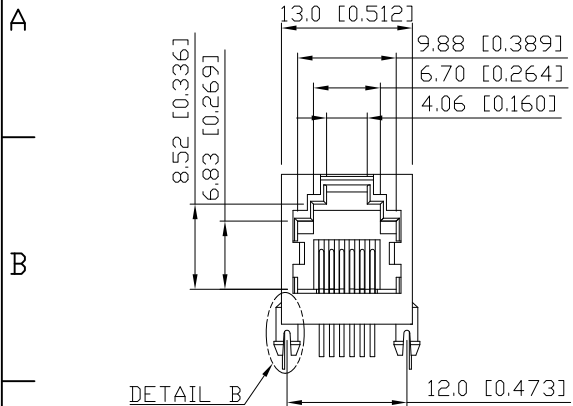
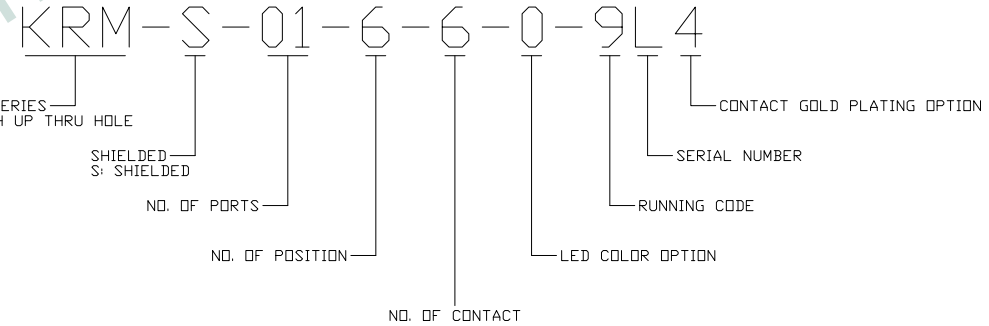


1. MECHANICAL DIMENSIONS :



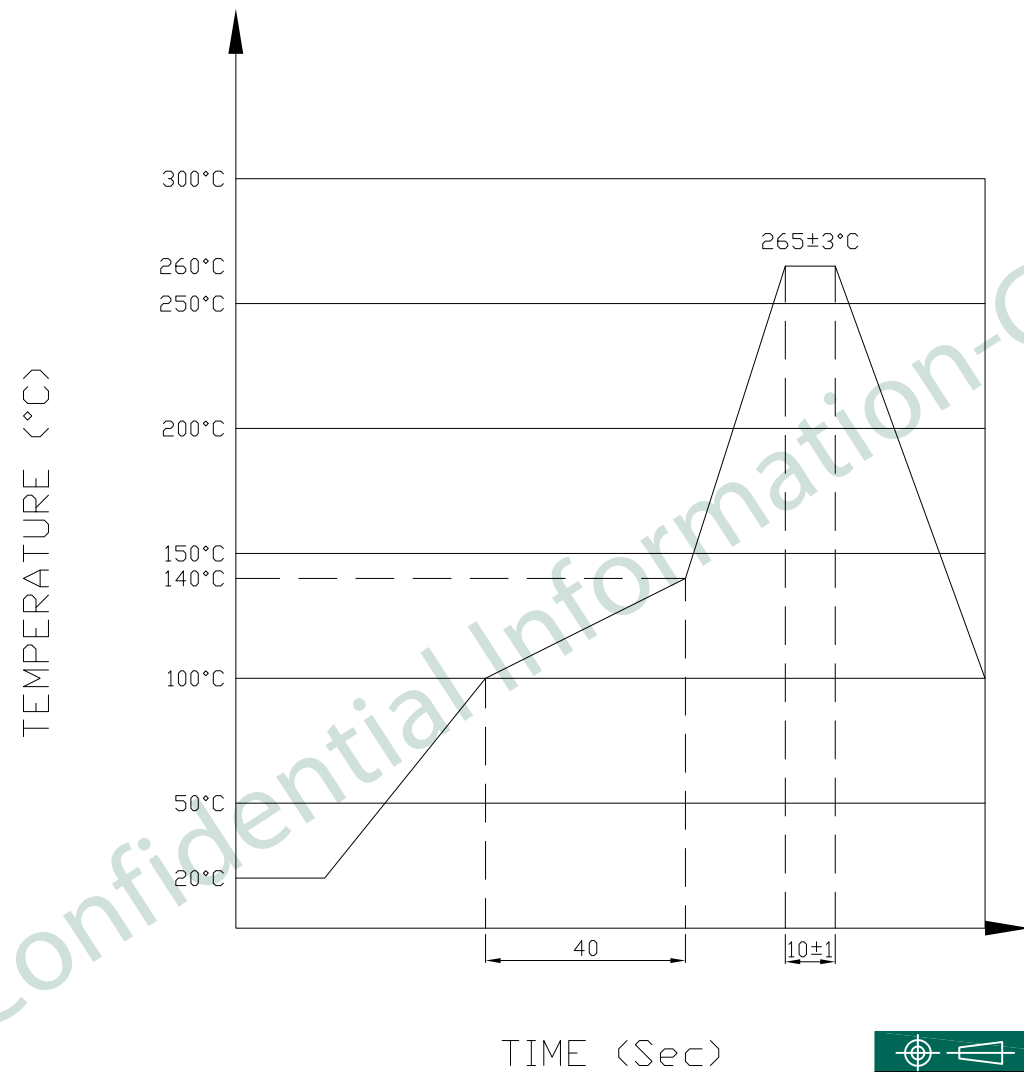
REV.	DATE	DESCRIPTION
02	Jan. 09, '18	1. UPDATE NOTES 2. UPDATE PROFILE OF WAVE SOLDER
01	Aug. 22, '16	1st RELEASE

- NOTES:
- MATERIAL:
HOUSING: HIGH THERMOPLASTIC, UL94V-0, BLACK
CONTACTS: T=0.35mm PHOS-BRONZE,
6u" GOLD PLATING ON CONTACT AREA,
TIN PLATING OVER NICKEL ON TAILS
SHIELD: COPPER ALLOY, NICKEL PLATING
 - OPERATING TEMPERATURE: -40°C~+85°C
 - INSERTION FORCE: 4 POUNDS MAX.
EXTRACTION FORCE: 4 POUNDS MAX.
 - DURABILITY: 750 MATING CYCLED MIN.
 - CAVITY CONFORMS TO FCC RULES AND REGULATIONS PART 68, SUBPART F.
 - UNSPECIFIED TOLERANCE: .XX ±0.25[0.010]
.X ±0.30[0.012]



PART NO		KRM-S-01-6-6-0-9L4		
TITLE	RJ25 6P6C, W/O LED, SHIELDED			
REV : 02				
UNIT	DRAWN	CHKD	DATE	SHEET
mm[inch]	CINDY	DANIEL	Jan. 09, '18	1 of 2

2. PROFILE OF WAVE SOLDER : \triangle 02



The measuring point for the specified temperature shall be on the soldered part of the lead

PART NO KRM-S-01-6-6-0-9L4				
TITLE	RJ25 6P6C, W/O LED, SHIELDED			
REV : 02				
UNIT	DRAWN	CHKD	DATE	SHEET
mm[inch]	CINDY	DANIEL	Jan. 09, '18	2 of 2