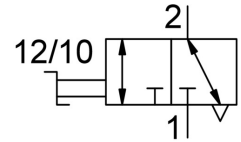


On off valve HE-3-QS-6

Part number: 153475

FESTO



Data sheet

| Feature | Value |
|--|--|
| Valve function | 3/2, bistable |
| Selection of additional function | with exhaust function |
| Pneumatic connection 1 | QS-6 |
| Pneumatic connection 2 | QS-6 |
| Actuation type | Manual |
| Type of mounting | Optionally: Direct mounting via through-hole Line installation |
| Standard nominal flow rate | 256.5 l/min |
| Nominal width | 3 mm |
| Operating pressure | -0.095 MPa ... 1 MPa |
| Operating pressure | -0.95 bar ... 10 bar |
| Ambient temperature | 0 °C ... 60 °C |
| Housing material | PBT-reinforced |
| Operating medium | Compressed air as per ISO 8573-1:2010 [7:::] |
| Exhaust air function | Without flow control option |
| Sealing principle | Soft |
| Mounting position | Any |
| Structural design | Piston gate valve |
| Type of control | Direct |
| Flow direction | Non-reversible |
| Symbol | 00997329 |
| Information on operating and pilot media | Operation with oil lubrication possible (required for further use) |
| Corrosion resistance class (CRC) | 2 - Moderate corrosion stress |
| LABS (PWIS) conformity | VDMA24364-B1/B2-L |
| Cleanroom class | Class 4 according to ISO 14644-1 |
| Temperature of medium | 0 °C ... 60 °C |
| Product weight | 23 g |
| Pneumatic connection 3 | Not ducted |
| Note on materials | RoHS-compliant |
| Seals material | NBR |