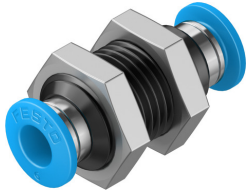


Push-in bulkhead connector QSS-6

Part number: 153158

FESTO



Data sheet

Feature	Value
Size	Standard
Nominal width	5 mm
Mounting position	Any
Design	Bulkhead
Pack size	10
Structural design	Push-pull principle
Operating pressure for entire temperature range	-0.095 MPa ... 0.6 MPa
Operating pressure for entire temperature range	-0.95 bar ... 6 bar
Operating pressure for entire temperature range	-13.775 psi ... 87 psi
Temperature-dependent operating pressure	-0.095 MPa ... 1.4 MPa
Temperature-dependent operating pressure	-0.95 bar ... 14 bar
Temperature-dependent operating pressure	-13.775 psi ... 203 psi
Maritime classification	See certificate
Operating medium	Compressed air as per ISO 8573-1:2010 [7:-:-] Water as per manufacturer's declaration at www.festo.com
Information on operating and pilot media	Operation with oil lubrication possible
Corrosion resistance class (CRC)	1 - Low corrosion stress
LABS (PWIS) conformity	VDMA24364-B1/B2-L
Ambient temperature	-10 °C ... 80 °C
Product weight	16 g
Type of mounting	External hexagon, AF 17
Pneumatic connection 1	For pneumatic tubing outside diameter 6 mm
Pneumatic connection 2	for pneumatic tubing outside diameter 6 mm
Releasing ring color	Blue
Note on materials	RoHS-compliant
Housing material	Aluminum, anodized
Releasing ring material	POM
Nut material	Brass, nickel-plated
Material of tubing seal	NBR
Material of tube retaining claw	High-alloy stainless steel