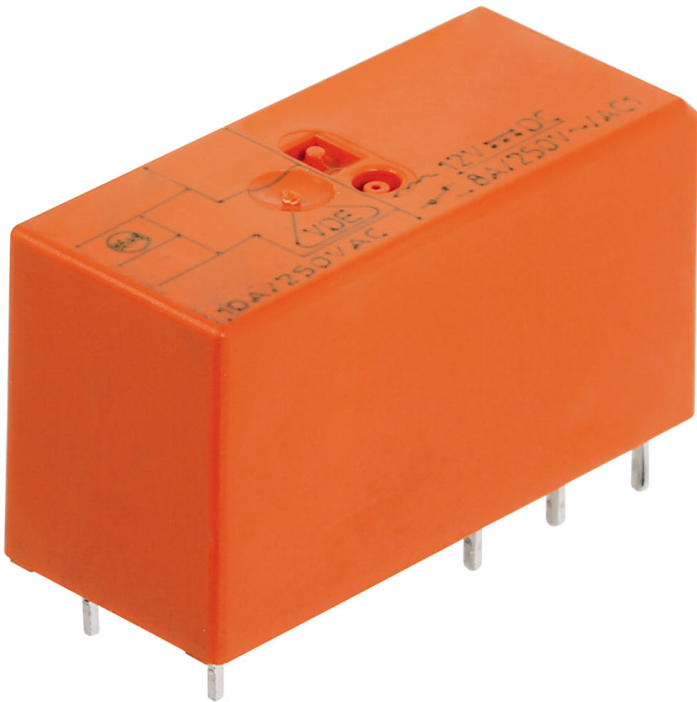


Data sheet

15229.2 PRS 2/115V AC



Plug-in miniature power relay, Encapsulated design with power contact, 2 CO contacts, Input voltage: 115 VAC

Business data

Article number	15229.2
Article name	PRS 2/115V AC
GTIN (EAN)	4044211046712
Packaging unit	1
Quantity unit	PC
Weight per piece (not including packaging)	12.7 g
Weight per piece (including packaging)	14.69 g
Unit of weight	G
Customs number	85364900
Country of origin	AT
Product description	Relay, encapsulated construction

Data sheet

15229.2 PRS 2/115V AC

Technical data

Dimensions

Length	29 mm
Width	12.7 mm
Height	15.7 mm

Ratings

Overvoltage category	III
Contamination degree	3 (250 VAC) / 2 (400 VAC)

Input data

Working voltage	>86,3 VAC -
Drop-out voltage	17,3 VAC
Coil voltage	115 VAC -
Power consumption	0,46 W
Coil resistance	8100 Ohm

Output data

Switching voltage / switching voltage max.	250 / 400 VAC
Continuous current max. / Inrush current max.	8 / 15 A
Contact configuration	2 CO contacts
Switching capacity, max.	2000 VA
Electrical lifespan (AC1)	1x10 ⁵
Mechanical lifespan	5x10 ⁶

Materials

Contact material	AgNi 90/10
Working temperature, min.	-40 °C
Working temperature, max.	70 °C

Further technical data

Degree of protection	RTII
Insulation voltage coil/contact	5 kV
Insulation voltage contact/contact	1 kV
Vibration resistance NO/NC	20/5 g
Pinning	5 mm

Data sheet

15229.2 PRS 2/115V AC



Technical data

Environmental Product Compliance

REACH Conform	yes
REACH Reference date	2023-06-14
REACH Candidate Substance Note	No
RoHS Conform	yes

Data sheet

15229.2 PRS 2/115V AC



Approvals

Standards and regulations

CE compliant	yes
--------------	-----

Media

Data sheet

15229.2 PRS 2/115V AC

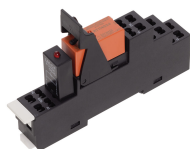
Accessories

##INVERSE##CONTA-ELECTRONICS



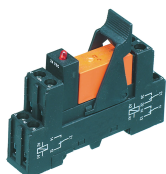
Pre-assembled relay module PRS..., Screw connection, Consisting of: relay socket base, power contact relay, pluggable display/suppression module and holding clip, 2 CO contacts, Input voltage: 115 VAC

Article number	Article name	GTIN (EAN)	Packaging unit
<u>15417.2</u>	PRSU 2G/115V AC	4044211080846	1 ST



Pre-assembled relay module PRS..., Tension-spring connection, Consisting of: relay socket base, power contact relay, pluggable display/suppression module and holding clip, 2 CO contact, Input voltage: 115 VAC

Article number	Article name	GTIN (EAN)	Packaging unit
<u>15796.2</u>	PRSU 2Z/115V AC	4044211135409	1 ST



Pre-assembled relay module PRS..., Screw connection, Consisting of: relay socket base, power contact relay, pluggable display/suppression module and holding clip, 2 CO contacts, Input voltage: 115 VAC

Article number	Article name	GTIN (EAN)	Packaging unit
<u>15413.2</u>	PRSU 2/115V AC	4044211080792	10 ST