



Relay holding clip, With eject, Suitable for relay socket base PRS 1 and PRS 2, for miniature power relays

**Business data**

Article number	<u>15138.2</u>
Article name	PRS C1/2
GTIN (EAN)	4044211046217
Packaging unit	1
Quantity unit	PC
Weight per piece (not including packaging)	1.8 g
Weight per piece (including packaging)	1.87 g
Unit of weight	G
Customs number	85389099
Country of origin	CN
Product description	Holding clip for encapsulated design

# Data sheet

## 15138.2 PRS C1/2



### Technical data

#### Materials

Working temperature, min.	-40 °C
Working temperature, max.	70 °C
Storage temperature, min.	-40 °C
Storage temperature, max.	85 °C

#### Further technical data

Holding clip suitable for relay base, type	PRS 1 / PRS 2
--	---------------

#### Environmental Product Compliance

REACH Conform	yes
REACH Reference date	2023-06-14
REACH Candidate Substance Note	No
RoHS Conform	yes

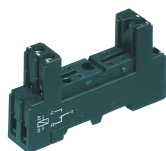
---

**Media**

---

### Accessories

#### ##INVERSE##CONTA-ELECTRONICS



Relay socket base PRS, for miniature power relay with 1 CO contact, Screw connection, Plug-in option for input/suppression modules, Mounting type: Mounting rail TS 35

Article number	Article name	GTIN (EAN)	Packaging unit
<u>15135.2</u>	PRS 1	4044211046187	1 ST



Relay socket base PRS, for miniature power relay with 2 CO contacts, Screw connection, Plug-in option for input/suppression modules, Mounting type: Mounting rail TS 35

Article number	Article name	GTIN (EAN)	Packaging unit
<u>15320.2</u>	PRS 2 G	4044211047115	1 ST



Relay socket base PRS, for miniature power relay with 2 CO contacts, Tension-spring connection, Plug-in option for input/suppression modules, Mounting type: Mounting rail TS 35

Article number	Article name	GTIN (EAN)	Packaging unit
<u>15789.2</u>	PRS 2 Z	4044211135256	1 ST



Relay socket base PRS, for miniature power relay with 2 CO contacts, Tension-spring connection, Plug-in option for input/suppression modules, Mounting type: Mounting rail TS 35

Article number	Article name	GTIN (EAN)	Packaging unit
<u>15789.2</u>	PRS 2 Z	4044211135256	1 ST



Pre-assembled relay module PRS..., Screw connection, Consisting of: relay socket base, power contact relay, pluggable display/suppression module and holding clip, 2 CO contacts, Input voltage: 24 VDC

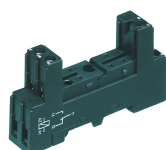
Article number	Article name	GTIN (EAN)	Packaging unit
<u>15233.2</u>	PRSU 2G/24V DC	4044211046736	10 ST

### ##INVERSE##CONTA-ELECTRONICS



Pre-assembled relay module PRS..., Screw connection, Consisting of: relay socket base, power contact relay, pluggable display/suppression module and holding clip, 2 CO contacts, Input voltage: 12 VDC

Article number	Article name	GTIN (EAN)	Packaging unit
<u>15165.2</u>	PRSU 2/12V DC	4044211046446	10 ST



Relay socket base PRS, for miniature power relay with 1 CO contact, Screw connection, Plug-in option for input/suppression modules, Mounting type: Mounting rail TS 35

Article number	Article name	GTIN (EAN)	Packaging unit
<u>15135.2</u>	PRS 1	4044211046187	1 ST



Pre-assembled relay module PRS..., Tension-spring connection, Consisting of: relay socket base, power contact relay, pluggable display/suppression module and holding clip, 2 CO contact, Input voltage: 24 VDC

Article number	Article name	GTIN (EAN)	Packaging unit
<u>15791.2</u>	PRSU 2Z/24V DC	4044211135355	10 ST



Pre-assembled relay module PRS..., Tension-spring connection, Consisting of: relay socket base, power contact relay, pluggable display/suppression module and holding clip, 2 CO contact, Input voltage: 24 VAC

Article number	Article name	GTIN (EAN)	Packaging unit
<u>15795.2</u>	PRSU 2Z/24V AC	4044211135393	1 ST



Pre-assembled relay module PRS..., Tension-spring connection, Consisting of: relay socket base, power contact relay, pluggable display/suppression module and holding clip, 2 CO contact, Input voltage: 115 VAC

Article number	Article name	GTIN (EAN)	Packaging unit
<u>15796.2</u>	PRSU 2Z/115V AC	4044211135409	1 ST

### ##INVERSE##CONTA-ELECTRONICS



Pre-assembled relay module PRS..., Tension-spring connection, Consisting of: relay socket base, power contact relay, pluggable display/suppression module and holding clip, 2 CO contact, Input voltage: 230 VAC

Article number	Article name	GTIN (EAN)	Packaging unit
<u>15797.2</u>	PRSU 2Z/230V AC	4044211135416	1 ST



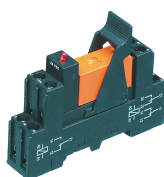
Pre-assembled relay module PRS..., Screw connection, Consisting of: relay socket base, power contact relay, pluggable display/suppression module and holding clip, 2 CO contacts, Input voltage: 48 VAC

Article number	Article name	GTIN (EAN)	Packaging unit
<u>15949.2</u>	PRSU 2G/48V AC	4044211141912	10 ST



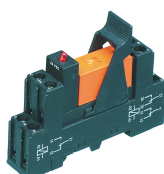
Pre-assembled relay module PRS..., Tension-spring connection, Consisting of: relay socket base, power contact relay, pluggable display/suppression module and holding clip, 2 CO contact, Input voltage: 48 VAC

Article number	Article name	GTIN (EAN)	Packaging unit
<u>15950.2</u>	PRSU 2Z/48V AC	4044211141929	10 ST



Pre-assembled relay module PRS..., Screw connection, Consisting of: relay socket base, power contact relay, pluggable display/suppression module and holding clip, 2 CO contacts, Input voltage: 24 VAC

Article number	Article name	GTIN (EAN)	Packaging unit
<u>15166.2</u>	PRSU 2/24V AC	4044211046453	10 ST



Pre-assembled relay module PRS..., Screw connection, Consisting of: relay socket base, power contact relay, pluggable display/suppression module and holding clip, 2 CO contacts, Input voltage: 24 VDC

Article number	Article name	GTIN (EAN)	Packaging unit
<u>15171.2</u>	PRSU 2/24V DC	4044211046484	10 ST

# Data sheet

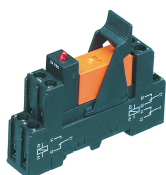
## 15138.2 PRS C1/2

### ##INVERSE##CONTA-ELECTRONICS



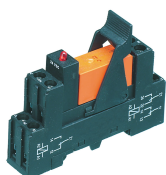
Pre-assembled relay module PRS..., Screw connection, Consisting of: relay socket base, power contact relay, pluggable display/suppression module and holding clip, 2 CO contacts, Input voltage: 230 VAC

Article number	Article name	GTIN (EAN)	Packaging unit
<u>15236.2</u>	PRSU 2G/230V AC	4044211046743	10 ST



Pre-assembled relay module PRS..., Screw connection, Consisting of: relay socket base, power contact relay, pluggable display/suppression module and holding clip, 2 CO contacts, Input voltage: 48 VDC

Article number	Article name	GTIN (EAN)	Packaging unit
<u>15411.2</u>	PRSU 2/48V DC	4044211080778	1 ST



Pre-assembled relay module PRS..., Screw connection, Consisting of: relay socket base, power contact relay, pluggable display/suppression module and holding clip, 2 CO contacts, Input voltage: 115 VAC

Article number	Article name	GTIN (EAN)	Packaging unit
<u>15413.2</u>	PRSU 2/115V AC	4044211080792	10 ST



Pre-assembled relay module PRS..., Tension-spring connection, Consisting of: relay socket base, power contact relay, pluggable display/suppression module and holding clip, 2 CO contact, Input voltage: 48 VDC

Article number	Article name	GTIN (EAN)	Packaging unit
<u>15792.2</u>	PRSU 2Z/48V DC	4044211135362	1 ST



Pre-assembled relay module PRS..., Tension-spring connection, Consisting of: relay socket base, power contact relay, pluggable display/suppression module and holding clip, 2 CO contact, Input voltage: 60 VDC

Article number	Article name	GTIN (EAN)	Packaging unit
<u>15793.2</u>	PRSU 2Z/60V DC	4044211135379	1 ST

# Data sheet

## 15138.2 PRS C1/2

### ##INVERSE##CONTA-ELECTRONICS



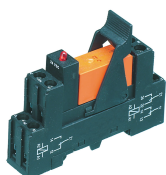
Pre-assembled relay module PRS..., Screw connection, Consisting of: relay socket base, power contact relay, pluggable display/suppression module and holding clip, 2 CO contacts, Input voltage: 230 VAC

Article number	Article name	GTIN (EAN)	Packaging unit
<u>15812.2</u>	PRSU 2G/230V AC Var.	4044211146511	1 ST



Pre-assembled relay module PRS..., Screw connection, Consisting of: relay socket base, power contact relay, pluggable display/suppression module and holding clip, 2 CO contacts, Input voltage: 48 VAC

Article number	Article name	GTIN (EAN)	Packaging unit
<u>15948.2</u>	PRSU 2/48V AC	4044211141905	10 ST



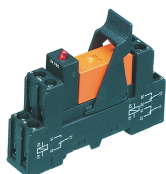
Pre-assembled relay module PRS..., Screw connection, Consisting of: relay socket base with multi-layer gold contact, pluggable display/suppression module and holding clip, 2 CO contacts, Input voltage: 24 VDC

Article number	Article name	GTIN (EAN)	Packaging unit
<u>16125.2</u>	PRSU 2/24V DC Au	4044211178192	1 ST



Pre-assembled relay module PRS..., Screw connection, Consisting of: relay socket base, power contact relay, pluggable display/suppression module and holding clip, 2 CO contacts, Input voltage: 12 VDC

Article number	Article name	GTIN (EAN)	Packaging unit
<u>15165.2</u>	PRSU 2/12V DC	4044211046446	10 ST



Pre-assembled relay module PRS..., Screw connection, Consisting of: relay socket base, power contact relay, pluggable display/suppression module and holding clip, 2 CO contacts, Input voltage: 230 VAC

Article number	Article name	GTIN (EAN)	Packaging unit
<u>15172.2</u>	PRSU 2/230V AC	4044211046491	10 ST



# Data sheet

## 15138.2 PRS C1/2

### ##INVERSE##CONTA-ELECTRONICS



Pre-assembled relay module PRS..., Screw connection, Consisting of: relay socket base, power contact relay, pluggable display/suppression module and holding clip, 2 CO contacts, Input voltage: 24 VAC

Article number	Article name	GTIN (EAN)	Packaging unit
<u>15385.2</u>	PRSU 2G/24V AC	4044211080815	1 ST



Pre-assembled relay module PRS..., Screw connection, Consisting of: relay socket base, power contact relay, pluggable display/suppression module and holding clip, 2 CO contacts, Input voltage: 60 VDC

Article number	Article name	GTIN (EAN)	Packaging unit
<u>15412.2</u>	PRSU 2/60V DC	4044211080785	1 ST



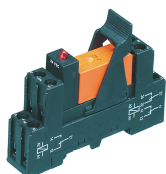
Pre-assembled relay module PRS..., Screw connection, Consisting of: relay socket base, power contact relay, pluggable display/suppression module and holding clip, 2 CO contacts, Input voltage: 12 VDC

Article number	Article name	GTIN (EAN)	Packaging unit
<u>15414.2</u>	PRSU 2G/12V DC	4044211080808	1 ST



Pre-assembled relay module PRS..., Screw connection, Consisting of: relay socket base, power contact relay, pluggable display/suppression module and holding clip, 2 CO contacts, Input voltage: 48 VDC

Article number	Article name	GTIN (EAN)	Packaging unit
<u>15415.2</u>	PRSU 2G/48V DC	4044211080822	1 ST



Pre-assembled relay module PRS..., Screw connection, Consisting of: relay socket base, power contact relay, pluggable display/suppression module and holding clip, 2 CO contacts, Input voltage: 110 VDC

Article number	Article name	GTIN (EAN)	Packaging unit
<u>15722.2</u>	PRSU 2/110V DC	4044211138424	1 ST

### ##INVERSE##CONTA-ELECTRONICS



Pre-assembled relay module PRS..., Screw connection, Consisting of: relay socket base, power contact relay, pluggable display/suppression module and holding clip, 2 CO contacts, Input voltage: 110 VDC

Article number	Article name	GTIN (EAN)	Packaging unit
<u>15723.2</u>	PRSU 2G/110V DC	4044211138431	1 ST



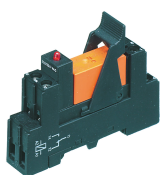
Relay socket base PRS, for miniature power relay with 1 CO contact, Tension-spring connection, Plug-in option for input/suppression modules, Mounting type: Mounting rail TS 35

Article number	Article name	GTIN (EAN)	Packaging unit
<u>15780.2</u>	PRS 1 Z	4044211135249	1 ST



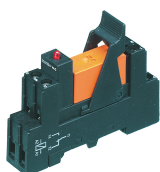
Pre-assembled relay module PRS..., Tension-spring connection, Consisting of: relay socket base, power contact relay, pluggable display/suppression module and holding clip, 2 CO contact, Input voltage: 110 VDC

Article number	Article name	GTIN (EAN)	Packaging unit
<u>15794.2</u>	PRSU 2Z/110V DC	4044211135386	1 ST



Pre-assembled relay module PRS..., Screw connection, Consisting of: relay socket base, power contact relay, pluggable display/suppression module and holding clip, 1 CO contact, Input voltage: 12 VDC

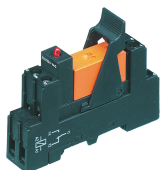
Article number	Article name	GTIN (EAN)	Packaging unit
<u>15163.2</u>	PRSU 1/12V DC	4044211046422	10 ST



Pre-assembled relay module PRS..., Screw connection, Consisting of: relay socket base, power contact relay, pluggable display/suppression module and holding clip, 1 CO contact, Input voltage: 24 VAC

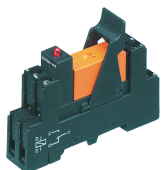
Article number	Article name	GTIN (EAN)	Packaging unit
<u>15164.2</u>	PRSU 1/24V AC	4044211046439	1 ST

### ##INVERSE##CONTA-ELECTRONICS



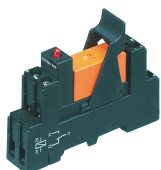
Pre-assembled relay module PRS..., Screw connection, Consisting of: relay socket base, power contact relay, pluggable display/suppression module and holding clip, 1 CO contact, Input voltage: 60 VDC

Article number	Article name	GTIN (EAN)	Packaging unit
<u>15720.2</u>	PRSU 1/60V DC	4044211138400	1 ST



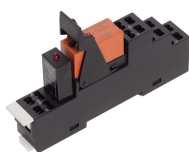
Pre-assembled relay module PRS..., Screw connection, Consisting of: relay socket base, power contact relay, pluggable display/suppression module and holding clip, 1 CO contact, Input voltage: 230 VAC

Article number	Article name	GTIN (EAN)	Packaging unit
<u>15170.2</u>	PRSU 1/230V AC	4044211046477	10 ST



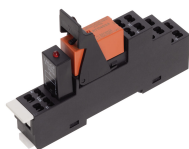
Pre-assembled relay module PRS..., Screw connection, Consisting of: relay socket base, power contact relay, pluggable display/suppression module and holding clip, 1 CO contact, Input voltage: 60 VDC

Article number	Article name	GTIN (EAN)	Packaging unit
<u>15720.2</u>	PRSU 1/60V DC	4044211138400	1 ST



Pre-assembled relay module PRS..., Tension-spring connection, Consisting of: relay socket base, power contact relay, pluggable display/suppression module and holding clip, 1 CO contact, Input voltage: 24 VDC

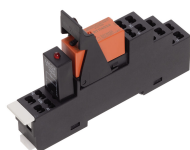
Article number	Article name	GTIN (EAN)	Packaging unit
<u>15782.2</u>	PRSU 1Z/24V DC	4044211135270	1 ST



Pre-assembled relay module PRS..., Tension-spring connection, Consisting of: relay socket base, power contact relay, pluggable display/suppression module and holding clip, 1 CO contact, Input voltage: 115 VAC

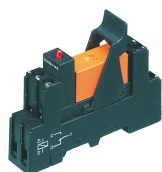
Article number	Article name	GTIN (EAN)	Packaging unit
<u>15786.2</u>	PRSU 1Z/115V AC	4044211135317	1 ST

### ##INVERSE##CONTA-ELECTRONICS



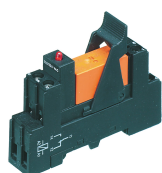
Pre-assembled relay module PRS..., Tension-spring connection, Consisting of: relay socket base, power contact relay, pluggable display/suppression module and holding clip, 1 CO contact, Input voltage: 230 VAC

Article number	Article name	GTIN (EAN)	Packaging unit
<u>15787.2</u>	PRSU 1Z/230V AC	4044211135324	1 ST



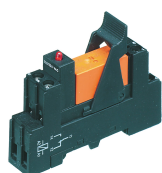
Pre-assembled relay module PRS..., Screw connection, Consisting of: relay socket base, power contact relay, pluggable display/suppression module and holding clip, 1 CO contact, Input voltage: 5 VDC

Article number	Article name	GTIN (EAN)	Packaging unit
<u>16077.2</u>	PRSU 1/5V DC	4044211171162	1 ST



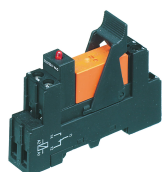
Pre-assembled relay module PRS..., Screw connection, Consisting of: relay socket base, power contact relay, pluggable display/suppression module and holding clip, 1 CO contact, Input voltage: 24 VDC

Article number	Article name	GTIN (EAN)	Packaging unit
<u>15169.2</u>	PRSU 1/24V DC	4044211046460	10 ST



Pre-assembled relay module PRS..., Screw connection, Consisting of: relay socket base, power contact relay, pluggable display/suppression module and holding clip, 1 CO contact, Input voltage: 60 VDC

Article number	Article name	GTIN (EAN)	Packaging unit
<u>15720.2</u>	PRSU 1/60V DC	4044211138400	1 ST



Pre-assembled relay module PRS..., Screw connection, Consisting of: relay socket base, power contact relay, pluggable display/suppression module and holding clip, 1 CO contact, Input voltage: 60 VDC

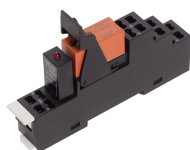
Article number	Article name	GTIN (EAN)	Packaging unit
<u>15720.2</u>	PRSU 1/60V DC	4044211138400	1 ST

### ##INVERSE##CONTA-ELECTRONICS



Pre-assembled relay module PRS..., Tension-spring connection, Consisting of: relay socket base, power contact relay, pluggable display/suppression module and holding clip, 1 CO contact, Input voltage: 24 VDC

Article number	Article name	GTIN (EAN)	Packaging unit
<u>15782.2</u>	PRSU 1Z/24V DC	4044211135270	1 ST



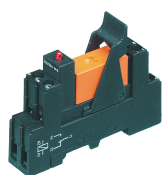
Pre-assembled relay module PRS..., Tension-spring connection, Consisting of: relay socket base, power contact relay, pluggable display/suppression module and holding clip, 1 CO contact, Input voltage: 24 VDC

Article number	Article name	GTIN (EAN)	Packaging unit
<u>15782.2</u>	PRSU 1Z/24V DC	4044211135270	1 ST



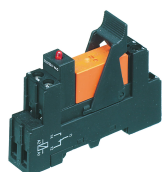
Pre-assembled relay module PRS..., Tension-spring connection, Consisting of: relay socket base, power contact relay, pluggable display/suppression module and holding clip, 1 CO contact, Input voltage: 24 VAC

Article number	Article name	GTIN (EAN)	Packaging unit
<u>15785.2</u>	PRSU 1Z/24V AC	4044211135300	1 ST



Pre-assembled relay module PRS..., Screw connection, Consisting of: relay socket base, power contact relay, pluggable display/suppression module and holding clip, 1 CO contact, Input voltage: 115 VAC

Article number	Article name	GTIN (EAN)	Packaging unit
<u>15418.2</u>	PRSU 1/115V AC	4044211080754	1 ST



Pre-assembled relay module PRS..., Screw connection, Consisting of: relay socket base, power contact relay, pluggable display/suppression module and holding clip, 1 CO contact, Input voltage: 115 VAC

Article number	Article name	GTIN (EAN)	Packaging unit
<u>15418.2</u>	PRSU 1/115V AC	4044211080754	1 ST

# Data sheet

## 15138.2 PRS C1/2

##INVERSE##CONTA-ELECTRONICS



Pre-assembled relay module PRS..., Tension-spring connection, Consisting of: relay socket base, power contact relay, pluggable display/suppression module and holding clip, 1 CO contact, Input voltage: 24 VDC

Article number	Article name	GTIN (EAN)	Packaging unit
<u>15788.2</u>	PRSU 1LZ/24V DC	4044211135331	1 ST



Pre-assembled relay module PRS..., Tension-spring connection, Consisting of: relay socket base, power contact relay, pluggable display/suppression module and holding clip, 1 CO contact, Input voltage: 24 VDC

Article number	Article name	GTIN (EAN)	Packaging unit
<u>15788.2</u>	PRSU 1LZ/24V DC	4044211135331	1 ST