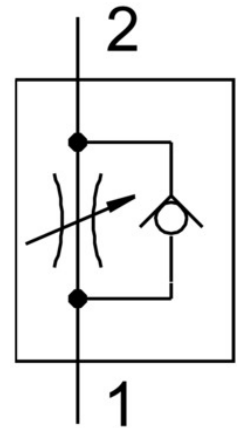


# One-way flow control valve GR-1/8-B

Part number: 151215

FESTO



## Data sheet

| Feature  | Value  |
|--|--|
| Valve function                                       | Flow control non-return function   |
| Pneumatic connection 1                               | G1/8   |
| Pneumatic connection 2                               | G1/8   |
| Adjusting element                                    | Knurled screw  |
| Type of mounting                                     | Optionally:<br>Front panel mounting<br>With through-hole   |
| Standard nominal flow rate in flow control direction | 210 l/min  |
| Standard nominal flow rate in non-return direction   | 180 l/min ... 275 l/min  |
| Operating pressure                                   | 0.5 bar ... 10 bar   |
| Ambient temperature                                  | -20 °C ... 60 °C   |
| Housing material                                     | Wrought aluminum alloy   |
| Explosion prevention and protection                  | Observe the information on the certificate<br>Zone 1 (ATEX)<br>Zone 2 (ATEX)<br>Zone 21 (ATEX)<br>Zone 22 (ATEX) |
| Mounting position                                    | Any  |
| Symbol   | 00991453   |
| Operating medium                                     | Compressed air as per ISO 8573-1:2010 [7:4:4]  |
| Information on operating and pilot media             | Operation with oil lubrication possible (required for further use)   |
| LABS (PWIS) conformity                               | VDMA24364-B1/B2-L  |
| Temperature of medium                                | -20 °C ... 60 °C   |
| Nominal width  | 3 mm   |
| Product weight                                       | 31 g   |
| Note on materials                                    | RoHS-compliant   |
| Seals material                                       | NBR  |
| Sleeve material                                      | POM  |
| Material of adjusting screw                          | High-alloy steel   |
| Nut material   | Wrought aluminum alloy   |