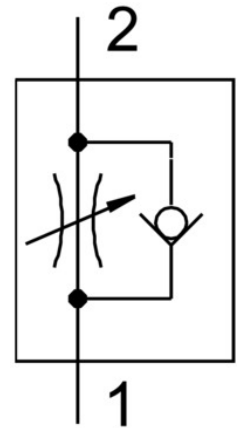


# One-way flow control valve GRLA-1/2-B

Part number: 151179

**FESTO**



## Data sheet

Feature	Value
Valve function	Exhaust air flow control non-return function
Pneumatic connection 1	G1/2
Pneumatic connection 2	G1/2
Adjusting element	Slotted screw
Type of mounting	Screw-in
Standard nominal flow rate in flow control direction	2100 l/min
Standard nominal flow rate in non-return direction	1550 l/min ... 2200 l/min
Operating pressure	0.3 bar ... 10 bar
Ambient temperature	-10 °C ... 60 °C
Maritime classification	See certificate
Explosion prevention and protection	Observe the information on the certificate Zone 1 (ATEX) Zone 2 (ATEX) Zone 21 (ATEX) Zone 22 (ATEX)
Mounting position	Any
Symbol	00991452
Standard flow rate in flow control direction 6 -> 0 bar	4000 l/min
Standard flow rate in non-return direction at 6 -> 0 bar	2950 l/min ... 4190 l/min
Operating medium	Compressed air as per ISO 8573-1:2010 [7:4:4]
Information on operating and pilot media	Operation with oil lubrication possible (required for further use)
LABS (PWIS) conformity	VDMA24364-B1/B2-L
Temperature of medium	-10 °C ... 60 °C
Max. tightening torque	40 Nm
Product weight	204 g
Note on materials	RoHS-compliant
Seals material	NBR
Hollow bolt material	Wrought aluminum alloy
Material of adjusting screw	Brass

Feature	Value
Nut material	Wrought aluminum alloy
Swivel joint material	Die-cast zinc