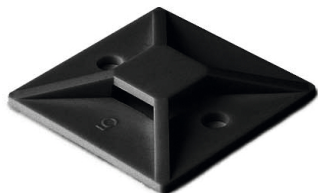


Specification Sheet

Part Number: MB50C2



Compact size fits most mounting applications.

Simple to install with a screw or rivet.

Single hole attachment with two-way entry for cable tie.

Screw Mount Cable Tie Base, 1.49" x 1.49", 0.35" Max Tie Width, 0.19" Hole Dia, PA66, Black, 100/pkg

Article Number 151-28500

Type MB5

Color Black (BK)

Quantity Per bag

Product Description These cable tie mounts are compact in size. They are designed for simple yet robust installation. They pair with a cable tie for mounting applications including telecom equipment, switchgear and control cabinets.

Short Description Screw Mount Cable Tie Base, 1.49" x 1.49", 0.35" Max Tie Width, 0.19" Hole Dia, PA66, Black, 100/pkg

Global Part Name MB5-PA66-BK

Length L (Imperial)	1.49
Length L (Metric)	37.7
Fixation Method	Screw Mounting and Rivet
Width W (Imperial)	1.49
Width W (Metric)	37.7
Cable Ties	T18 - T150
Height H (Imperial)	.25
Height H (Metric)	6.20
Cable Tie Width Max (Imperial)	0.35
Cable Tie Width Max (Metric)	8.9
Mounting Hole Diameter D (Imperial)	0.19
Mounting Hole Diameter D (Metric)	4.8 mm
Mounting Hole Diameter D Max (Metric)	4.8
Mounting Hole Centers (Imperial)	1.0
Material	Polyamide 6.6 (PA66)

Material Shortcut	PA66
Flammability	UL 94 V-2
UV Resistant (Yes/No)	No
Operating Temperature	-40°F to +185°F (-40°C to +85°C)
Reach Compliant (Article 33)	No
ROHS Compliant	Yes
Certification/Specification	UL
UL Recognized (US)	Yes
UL Recognized (US and Canada)	Yes
Package Quantity (Imperial)	100
Package Quantity (Metric)	100
Customs Number	3926909988

About HellermannTyton

HellermannTyton is a global manufacturer of cable management and identification solutions for automotive, solar, electrical, construction, industrial automation, broadband and other OEM markets. The company's integrated approach to product design, sustainability, production, quality assurance and delivery is optimized to benefit local and global customers. HellermannTyton operates in 39 countries, with North American headquarters in Milwaukee, Wisconsin. (www.hellermann.tyton.com).

