

Data sheet

1485.2 RK 240 Ex BG



Ex feed-through terminal ATEX-certified, Screw connection, Mounting type: Mounting rail TS 35/7.5 and TS 32, Rated cross-section: 240 mm², Width: 36 mm, Colour: Beige

Business data

Article number	1485.2
Article name	RK 240 Ex BG
GTIN (EAN)	4044211107888
Explosion-proof version (EEx e)	yes
Packaging unit	5
Quantity unit	PC
Weight per piece (not including packaging)	352.4 g
Weight per piece (including packaging)	373.6 g
Unit of weight	G
Customs number	85369010
Country of origin	DE
Prio-Article	1485.2
Product description	Ex feed-through terminal ATEX-certified

Data sheet

1485.2 RK 240 Ex BG

Technical data

Dimensions

Length	93 mm
Width	36 mm
Height TS 35/7.5	126.3 mm
Height TS 32	132 mm

Ratings

Rated voltage	1000 V
Rated current	415 A
Rated cross-section	240 mm ²
Rated impulse voltage	8 kV
Overvoltage category	III
Contamination degree	3
Maximum power dissipation for nominal condition	12.16 W

Connection data

Connection principle	Screw connection
Connection position	Lateral
Connections	2
Number of terminals per level	2
Number of levels	1
Wire cross-section single-core (rigid) / stranded, min.	50 mm ²
Wire cross-section single core (rigid)/stranded, max.	240 mm ²
Wire cross-section stranded, min.	35 mm ²
Wire cross-section stranded, max.	150 mm ²
Wire cross-section stranded with wire-end ferrules, min.	70 mm ²
Wire cross-section stranded with wire-end ferrules, max.	240 mm ²
Wire cross-section AWG, min.	2/0
Wire cross-section AWG, max.	500 Kcmil
Stripping length	38 mm
Screw head	Inner hex (Allen)
Screw threading	M 10
Tightening torque, min.	14 Nm
Tightening torque, max.	20 Nm

Data sheet

1485.2 RK 240 Ex BG



Technical data

Materials

Insulation housing	Polyamide 6.6
Flammability class UL 94	V-2
Working temperature, min.	-40 °C
Working temperature, max.	105 °C

Further technical data

Mounting type	Mounting rail TS 35/7.5 and TS 32
Gauge plug acc. to EN 60 947-1	B16

Environmental Product Compliance

REACH Candidate Substance Note	No
--------------------------------	----

Approvals

Standards and regulations

ATEX certification number	TÜV ATEX 7092 U
EAC approval	TR ZU 004/2011
EAC approval granted	yes

CSA approval

CSA approval	C22.2 No 158
CSA approval granted	yes
CSA Usegroup C: rated voltage	600 V
CSA Usegroup C: rated current	370 A
CSA wire cross-section AWG, min.	2/0
CSA wire cross-section AWG, max.	500 Kcmil
CSA stripping length	38 mm
CSA File Number	042110_0_000

CSAus approval

CSAus approval	UL 1059
CSAus approval granted	yes
CSAus Usegroup C: rated voltage	600 V
CSAus Usegroup C: rated current	370 A
CSAus wire cross-section AWG, min.	2/0
CSAus wire cross-section AWG, max.	500 Kcmil
CSAus stripping length	38 mm
CSAus File Number	042110_0_000

KEMA KEUR approval

KEMA KEUR approval	EN 60947-7-1:2009
KEMA KEUR approval granted	yes
KEMA rated voltage	1000 V
KEMA rated current	415 A
KEMA rated impulse voltage	12 kV
KEMA wire cross-section single core (rigid), min.	50 mm ²
KEMA wire cross-section single-core (rigid), max.	240 mm ²
KEMA wire cross-section stranded, min.	70 mm ²
KEMA wire cross-section stranded, max.	240 mm ²
KEMA stripping length	38 mm
KEMA torque, min.	14 Nm
KEMA torque, max.	20 Nm

Approvals

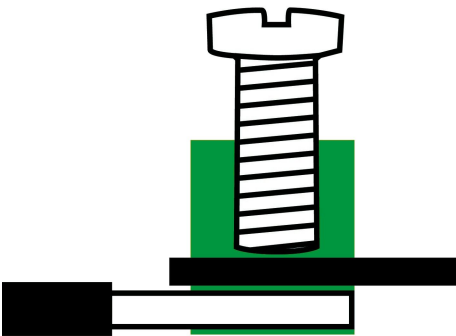
UL Recognized

UL approval	UL 1059
UL Usegroup B: rated voltage	600 V
UL Usegroup B: rated current	370 A
UL Usegroup C: rated voltage	600 V
UL Usegroup C: rated current	370 A
UL wire cross-section single-core (rigid) AWG, min.	2/0
UL wire cross-section single-core (rigid) AWG, max.	500 Kcmil
UL wire cross-section stranded AWG, min.	2/0
UL wire cross-section stranded AWG, max.	500 Kcmil
UL torque	142 Lb In
UL wire material	Cu
UL factory wiring	1
UL File Number	E95701
UL Recognized	1

German Lloyd approval

DNV GL Certificate number	TAE000014T
DNV GL Location Classes	Temperature: B, Humidity: B, Vibration: A
DNV GL approval granted	1
DNV GL rated cross-section	240 mm ²
DNV GL rated current	370 A
DNV GL rated voltage	600 V
DNV GL test standard	IEC 60947-7-1:2002

Media



Accessories

Cover



Cover, Length: 60 mm, Width: 25.5 mm, Colour: Yellow

Article number	Article name	GTIN (EAN)	Packaging unit
<u>2808.0</u>	AD 1/240/B YE	4044211055370	20 ST

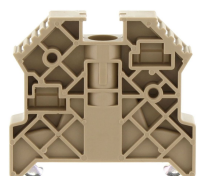
Inlay profile



Inlay plate, Colour: natural

Article number	Article name	GTIN (EAN)	Packaging unit
<u>2360.0</u>	EP 240	4044211051495	10 ST

End stop



End stop, Mounting type: Mounting rail TS 35/7.5, Width: 9.5 mm, Colour: Beige

Article number	Article name	GTIN (EAN)	Packaging unit
<u>2828.0</u>	ES 35/K/ST BG	4044211055547	50

Allen key socket wrench



Inner hex key with bare blade

Article number	Article name	GTIN (EAN)	Packaging unit
<u>2773.0</u>	ISKS 8	4044211055035	1 ST

Measurement pick-off terminal

Data sheet

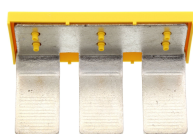
1485.2 RK 240 Ex BG



Measurement pick-off terminal, Screw connection, Mounting type: On base, Rated cross-section: 10 mm², Width: 10 mm, Colour: Beige

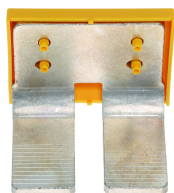
Article number	Article name	GTIN (EAN)	Packaging unit
<u>1125.2</u>	MAG 150/240 BG	4044211080921	10 ST

Insulated cross-connector



External insulated cross-connector, No. of poles: 3, Mounting type: Plug in, Width: 103.12 mm, Rated current: 380 A; Colour: Yellow

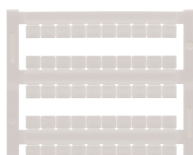
Article number	Article name	GTIN (EAN)	Packaging unit
<u>2770.2</u>	AQI 3/240 YE	4044211055004	5



External insulated cross-connector, No. of poles: 2, Mounting type: Plug in, Width: 66.28 mm, Rated current: 380 A; Colour: Yellow

Article number	Article name	GTIN (EAN)	Packaging unit
<u>2769.2</u>	AQI 2/240 YE	4044211054991	5

Quick marking



Terminal marker / Pocket Maxicard, Length: 5 mm, Width: 6 mm, Colour: White

Article number	Article name	GTIN (EAN)	Packaging unit
<u>4702.7</u>	PMC SB 6/50 WH	4044211089986	500 ST