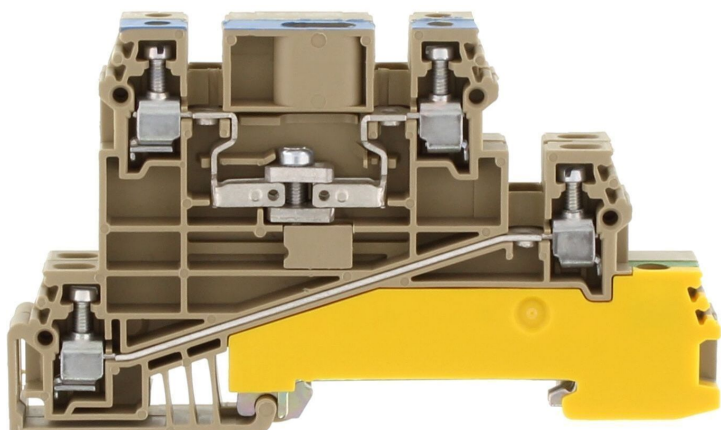


Data sheet

1449.2 DLI 2,5 B-D BG



Three-wire installation terminal, Screw connection, Mounting type: Mounting rail TS 35/7.5, Rated cross-section: 2.5 mm², Width: 12 mm, Colour: Beige

Business data

Article number	1449.2
Article name	DLI 2,5 B-D BG
GTIN (EAN)	4044211044985
Packaging unit	25
Quantity unit	PC
Weight per piece (not including packaging)	42 g
Weight per piece (including packaging)	44.63 g
Unit of weight	G
Customs number	85369010
Country of origin	CZ
Product description	Three-wire installation terminals
Colour	Beige

Technical data

Dimensions

Length	90.5 mm
Width	12 mm
Height TS 35/7.5	53 mm

Ratings

Rated voltage	400 V
Rated current	24 A
Rated cross-section	2.5 mm ²
Rated impulse voltage	4 kV
Overvoltage category	III
Contamination degree	3
Maximum power dissipation for nominal condition	3.07 W

Connection data

Connection principle	Screw connection
Connection position	Lateral
Connections	9
Number of potentials	5
Wire cross-section single-core (rigid) / stranded, min.	0.2 mm ²
Wire cross-section single core (rigid)/stranded, max.	4 mm ²
Wire cross-section stranded, min.	0.2 mm ²
Wire cross-section stranded, max.	4 mm ²
Wire cross-section stranded with wire-end ferrules, min.	0.2 mm ²
Wire cross-section stranded with wire-end ferrules, max.	2.5 mm ²
Wire cross-section AWG, min.	22
Wire cross-section AWG, max.	14
Stripping length	8 mm
Screw head	Slotted
Screw threading	M 2,5
Tightening torque, min.	0.4 Nm
Tightening torque, max.	0.8 Nm
N-function possible	✓
PE function is possible	✓
N partition slides available	✓

Technical data

Materials

Insulation housing	Polyamide 6.6
Flammability class UL 94	V-2
Working temperature, min.	-40 °C
Working temperature, max.	105 °C

Further technical data

Mounting type	Mounting rail TS 35/7,5
Gauge plug acc. to EN 60 947-1	A3
End plate required	✓

Environmental Product Compliance

REACH Conform	yes
REACH Reference date	2023-06-14
REACH Candidate Substance Note	No
RoHS Conform	yes

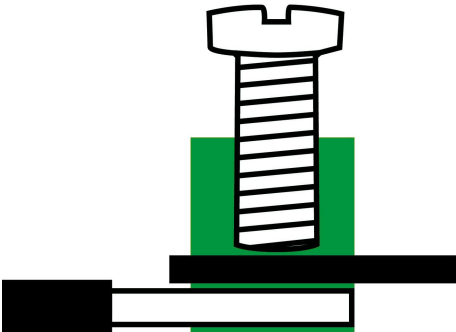
Approvals

Standards and regulations

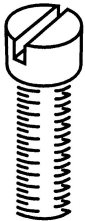
EAC approval	TR ZU 004/2011
EAC approval granted	yes

Media

EAC



M2.5



Data sheet

1449.2 DLI 2,5 B-D BG

Accessories

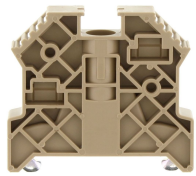
End plate



End plate, Width: 1.5 mm, Colour: Beige

Article number	Article name	GTIN (EAN)	Packaging unit
<u>2831.2</u>	AP 2,5/D BG	4044211055561	20 ST

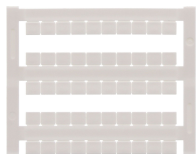
End stop



End stop, Mounting type: Mounting rail TS 35/7.5, Width: 9.5 mm, Colour: Beige

Article number	Article name	GTIN (EAN)	Packaging unit
<u>2828.0</u>	ES 35/K/ST BG	4044211055547	50

Quick marking



Terminal marker / Pocket Maxicard, Length: 5 mm, Width: 6 mm, Colour: White

Article number	Article name	GTIN (EAN)	Packaging unit
<u>4702.7</u>	PMC SB 6/50 WH	4044211089986	500 ST

Insulation plate



Insulation plate, Colour: Beige

Article number	Article name	GTIN (EAN)	Packaging unit
<u>2566.2</u>	TRS 3 BG	4044211053567	100 ST

Screwdriver

Data sheet

1449.2 DLI 2,5 B-D BG



Screwdriver with bare blade, Colour: Black-grey



Article number	Article name	GTIN (EAN)	Packaging unit
<u>1085.0</u>	SDB 0,5x3,0	4044211014643	1 ST