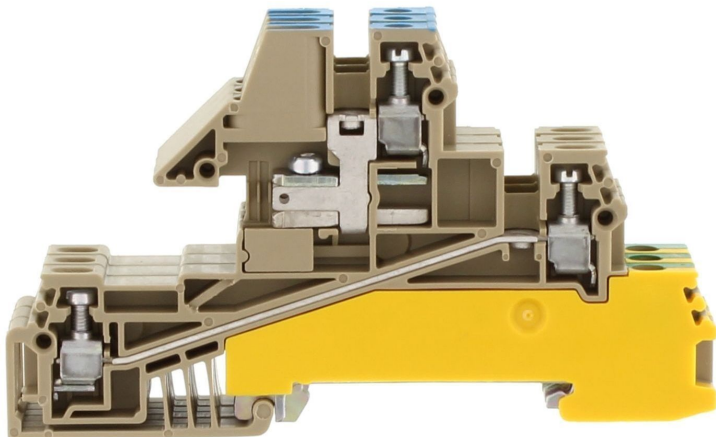


Data sheet

1446.2 DLIS 2,5 B-W BG



Three-wire installation terminal, Screw connection, Mounting type: Mounting rail TS 35/7.5, Rated cross-section: 2.5 mm², Width: 18 mm, Colour: Beige

Business data

Article number	<u>1446.2</u>
Article name	DLIS 2,5 B-W BG
GTIN (EAN)	4044211044954
Packaging unit	16
Quantity unit	PC
Weight per piece (not including packaging)	76 g
Weight per piece (including packaging)	80.43 g
Unit of weight	G
Customs number	85369010
Country of origin	CZ
Product description	Three-wire installation terminals
Colour	Beige

Technical data

Dimensions

Length	90.5 mm
Width	18 mm
Height TS 35/7.5	53 mm

Ratings

Rated voltage	400 V
Rated current	24 A
Rated cross-section	2.5 mm ²
Rated impulse voltage	4 kV
Overvoltage category	III
Contamination degree	3
Maximum power dissipation for nominal condition	4.61 W

Connection data

Connection principle	Screw connection
Connection position	Lateral
Connections	12
Number of potentials	9
Special connection	Busbar 10 x 3 mm
Wire cross-section single-core (rigid) / stranded, min.	0.2 mm ²
Wire cross-section single core (rigid)/stranded, max.	4 mm ²
Wire cross-section stranded, min.	0.2 mm ²
Wire cross-section stranded, max.	4 mm ²
Wire cross-section stranded with wire-end ferrules, min.	0.2 mm ²
Wire cross-section stranded with wire-end ferrules, max.	2.5 mm ²
Wire cross-section AWG, min.	22
Wire cross-section AWG, max.	14
Stripping length	8 mm
Screw head	Slotted
Screw threading	M 2,5
Tightening torque, min.	0.4 Nm
Tightening torque, max.	0.8 Nm
N-function possible	✓
PE function is possible	✓
N partition slides available	✓

Technical data

Materials

Insulation housing	Polyamide 6.6
Flammability class UL 94	V-2
Working temperature, min.	-40 °C
Working temperature, max.	105 °C

Further technical data

Mounting type	Mounting rail TS 35/7,5
Gauge plug acc. to EN 60 947-1	A3
End plate required	✓

Environmental Product Compliance

REACH Conform	yes
REACH Reference date	2023-06-14
REACH Candidate Substance Note	No
RoHS Conform	yes

Media



Accessories

End plate



End plate, Width: 1.5 mm, Colour: Beige

Article number

Article name

GTIN (EAN)

Packaging unit

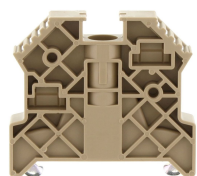
2829.2

AP 2,5/S BG

4044211055554

20 ST

End stop



End stop, Mounting type: Mounting rail TS 35/7.5, Width: 9.5 mm, Colour: Beige

Article number

Article name

GTIN (EAN)

Packaging unit

2828.0

ES 35/K/ST BG

4044211055547

50

Fixing plate



Retaining plate, Width: 1.5 mm, Colour: Blue

Article number

Article name

GTIN (EAN)

Packaging unit

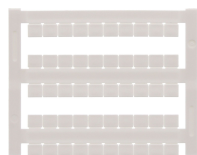
2890.5

HP DLIS BU

4044211056155

20 ST

Quick marking



Terminal marker / Pocket Maxicard, Length: 5 mm, Width: 6 mm, Colour: White

Article number

Article name

GTIN (EAN)

Packaging unit

4702.7

PMC SB 6/50 WH

4044211089986

500 ST

Neutral busbar

Data sheet

1446.2 DLIS 2,5 B-W BG



Busbar, Material: Copper, Colour: natural

Article number	Article name	GTIN (EAN)	Packaging unit
<u>2129.0</u>	Ssch 10x3 CU	4044211049485	1 M

Screwdriver

Screwdriver with bare blade, Colour: Black-grey



Article number	Article name	GTIN (EAN)	Packaging unit
<u>1085.0</u>	SDB 0,5x3,0	4044211014643	1 ST