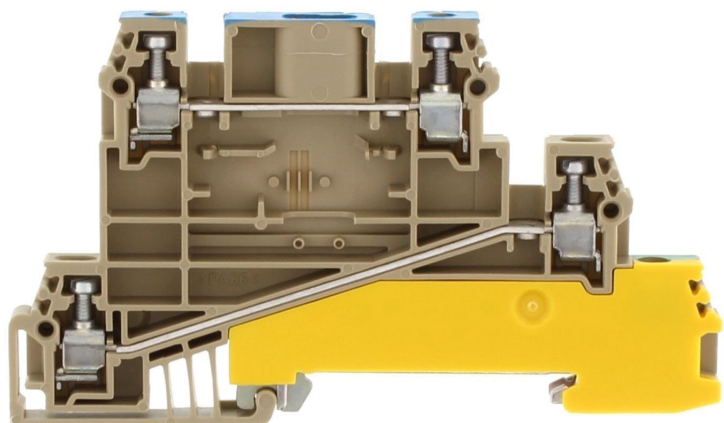


Data sheet

1418.2 DLI 2,5 PE/L/N BG



Three-wire installation terminal, Screw connection, Mounting type: Mounting rail TS 35/7.5, Rated cross-section: 2.5 mm², Width: 6 mm, Colour: Beige

Business data

Article number	1418.2
Article name	DLI 2,5 PE/L/N BG
GTIN (EAN)	4044211044633
Packaging unit	50
Quantity unit	PC
Weight per piece (not including packaging)	24.6 g
Weight per piece (including packaging)	26.08 g
Unit of weight	G
Customs number	85369010
Country of origin	CZ
Product description	Three-wire installation terminals
Colour	Beige

Technical data

Dimensions

Length	90.5 mm
Width	6 mm
Height TS 35/7.5	53 mm

Ratings

Rated voltage	400 V
Rated current	24 A
Rated cross-section	2.5 mm ²
Rated impulse voltage	4 kV
Overvoltage category	III
Contamination degree	3
Maximum power dissipation for nominal condition	1.54 W

Connection data

Connection principle	Screw connection
Connection position	Lateral
Connections	5
Number of potentials	3
Wire cross-section single-core (rigid) / stranded, min.	0.2 mm ²
Wire cross-section single core (rigid)/stranded, max.	4 mm ²
Wire cross-section stranded, min.	0.2 mm ²
Wire cross-section stranded, max.	4 mm ²
Wire cross-section stranded with wire-end ferrules, min.	0.2 mm ²
Wire cross-section stranded with wire-end ferrules, max.	2.5 mm ²
Wire cross-section AWG, min.	22
Wire cross-section AWG, max.	14
Stripping length	8 mm
Screw head	Slotted
Screw threading	M 2,5
Tightening torque, min.	0.4 Nm
Tightening torque, max.	0.8 Nm
N-function possible	✓
PE function is possible	✓

Technical data

Materials

Insulation housing	Polyamide 6.6
Flammability class UL 94	V-2
Working temperature, min.	-40 °C
Working temperature, max.	105 °C

Further technical data

Mounting type	Mounting rail TS 35/7,5
Gauge plug acc. to EN 60 947-1	A3
Number of cross-connection channels	3
End plate required	✓

Environmental Product Compliance

REACH Conform	yes
REACH Reference date	2023-06-14
REACH Candidate Substance Note	No
RoHS Conform	yes

Approvals

Standards and regulations

EAC approval	TR ZU 004/2011
EAC approval granted	yes

CSA approval

CSA approval	C22.2 No 158
CSA approval granted	yes
CSA Usegroup B: rated voltage	300 V
CSA Usegroup B: rated current	15 A
CSA wire cross-section AWG, min.	22
CSA wire cross-section AWG, max.	14
CSA stripping length	8 mm

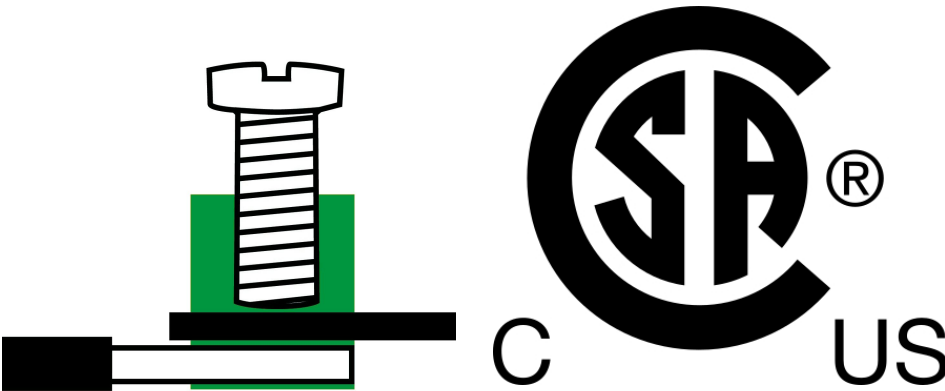
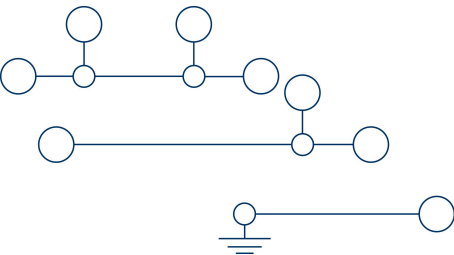
CSAus approval

CSAus approval	UL 1059
CSAus approval granted	yes
CSAus Usegroup B: rated voltage	300 V
CSAus Usegroup B: rated current	15 A
CSAus wire cross-section AWG, min.	22
CSAus wire cross-section AWG, max.	14
CSAus stripping length	8 mm

KEMA KEUR approval

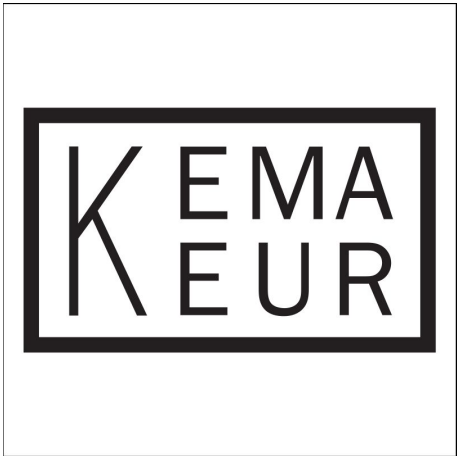
KEMA KEUR approval	EN 60947-7-1:2009, EN 60947-7-2:2009
KEMA KEUR approval granted	yes
KEMA rated voltage	400 V
KEMA rated current	24 A
KEMA rated impulse voltage	6 kV
KEMA wire cross-section single core (rigid), min.	0.2 mm ²
KEMA wire cross-section single-core (rigid), max.	4 mm ²
KEMA wire cross-section stranded, min.	0.2 mm ²
KEMA wire cross-section stranded, max.	4 mm ²
KEMA torque, min.	0.4 Nm
KEMA torque, max.	0.8 Nm

Media



M2.5 

EAC



Accessories

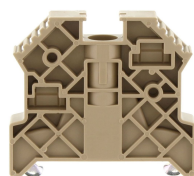
End plate



End plate, Width: 1.5 mm, Colour: Beige

Article number	Article name	GTIN (EAN)	Packaging unit
<u>2831.2</u>	AP 2,5/D BG	4044211055561	20 ST

End stop



End stop, Mounting type: Mounting rail TS 35/7.5, Width: 9.5 mm, Colour: Beige

Article number	Article name	GTIN (EAN)	Packaging unit
<u>2828.0</u>	ES 35/K/ST BG	4044211055547	50

Cross-connector



Cross-connector, No. of poles: 3, Mounting type: Can be screwed on, Width: 16.6 mm, Rated cross-section: 2.5 mm², Colour: natural

Article number	Article name	GTIN (EAN)	Packaging unit
<u>2833.0</u>	Q 3	4044211055585	50 ST



Cross-connector, No. of poles: 4, Mounting type: Can be screwed on, Width: 22.7 mm, Rated cross-section: 2.5 mm², Colour: natural

Article number	Article name	GTIN (EAN)	Packaging unit
<u>2834.0</u>	Q 4	4044211055592	20 ST



Cross-connector, No. of poles: 10, Mounting type: Can be screwed on, Width: 59.3 mm, Rated cross-section: 2.5 mm², Colour: natural

Article number	Article name	GTIN (EAN)	Packaging unit
<u>2835.0</u>	Q 10	4044211055608	10 ST

Cross-connector

Cross-connector, No. of poles: 20, Mounting type: Can be screwed on, Width: 120.3 mm, Rated cross-section: 2.5 mm², Colour: natural



Article number	Article name	GTIN (EAN)	Packaging unit
<u>2836.0</u>	Q 20	4044211055615	10 ST

Cross-connector, No. of poles: 82, Mounting type: Screwable, Width: 500 mm, Rated cross-section: 2.5 mm², Colour: natural



Article number	Article name	GTIN (EAN)	Packaging unit
<u>2154.0</u>	Q 0,5 m/82 Pole	4044211049751	1 ST

Cross-connector, No. of poles: 2, Mounting type: Can be screwed on, Width: 10.5 mm, Rated cross-section: 2.5 mm², Colour: natural



Article number	Article name	GTIN (EAN)	Packaging unit
<u>2832.0</u>	Q 2	4044211055578	50 ST

Insulation plate

Insulation plate, Colour: Beige



Article number	Article name	GTIN (EAN)	Packaging unit
<u>2566.2</u>	TRS 3 BG	4044211053567	100 ST

Screwdriver

Screwdriver with bare blade, Colour: Black-grey



Article number	Article name	GTIN (EAN)	Packaging unit
<u>1085.0</u>	SDB 0,5x3,0	4044211014643	1 ST