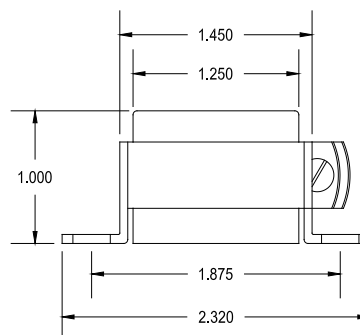
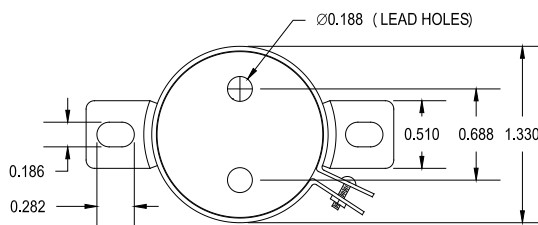


140MEX

CHASSIS MOUNT – SHIELDED
IMPEDANCE MATCHING TRANSFORMER

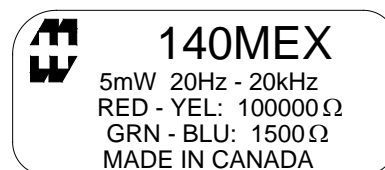
This transformer operates in the 20 Hz to 20 KHz range. The metal can provides excellent shielding from a broad range of external sources. The nickel core provides high permeability combined with low losses.

Typical applications Input/output Isolation, Line Matching, Driver, Hybrid applications.

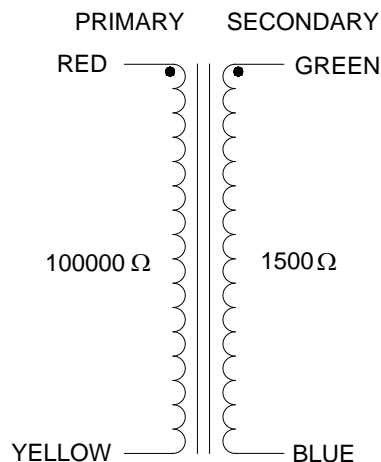


ELECTRICAL SPECIFICATIONS

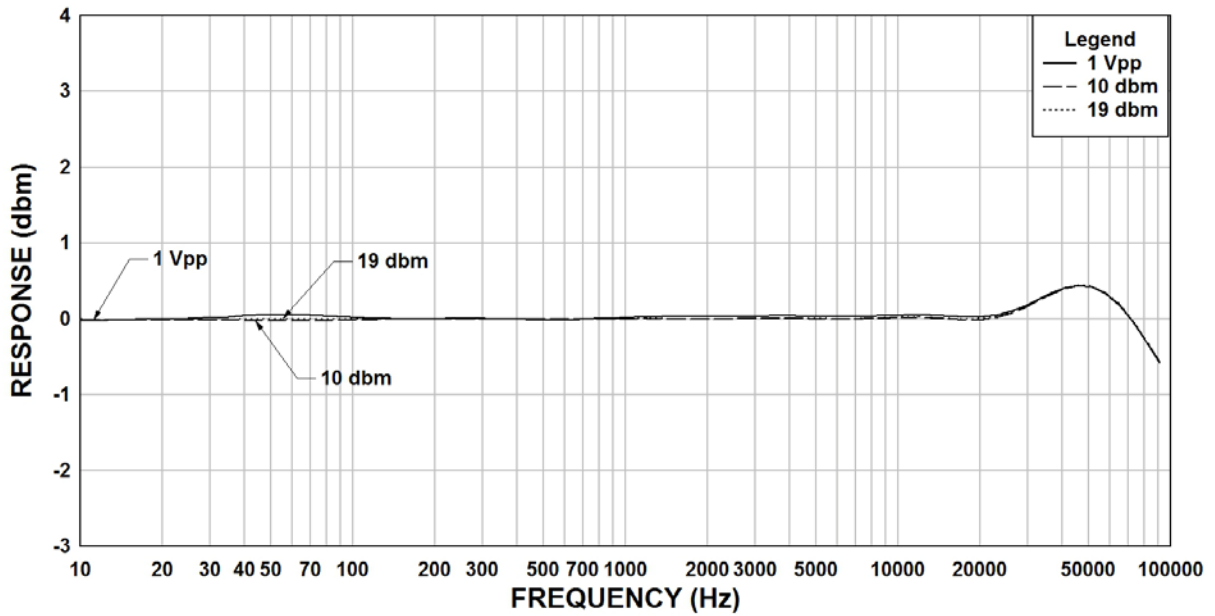
Characteristic	Typical
Input Impedance	100,000 Ω
Output Impedance	1500 Ω
Output Power	10.0 dbm
DCR	
Primary	5430 Ω
Secondary	159 Ω
Inductance	@ 1.0 kHz, 1.0 V OC
Primary	2100 H
Secondary	34 H
Impedance	@ 1.0 kHz, 1.0 V OC
Primary	13.7 k Ω
Secondary	810 k Ω
Frequency Response	± 1 db from 20 Hz to 20KHz
Turns ratio	8.13:1
Insertion Loss	<1.2 db
Return Loss	30.0 db
Longitudinal balance	-70 db
Dielectric Strength	500 Vrms



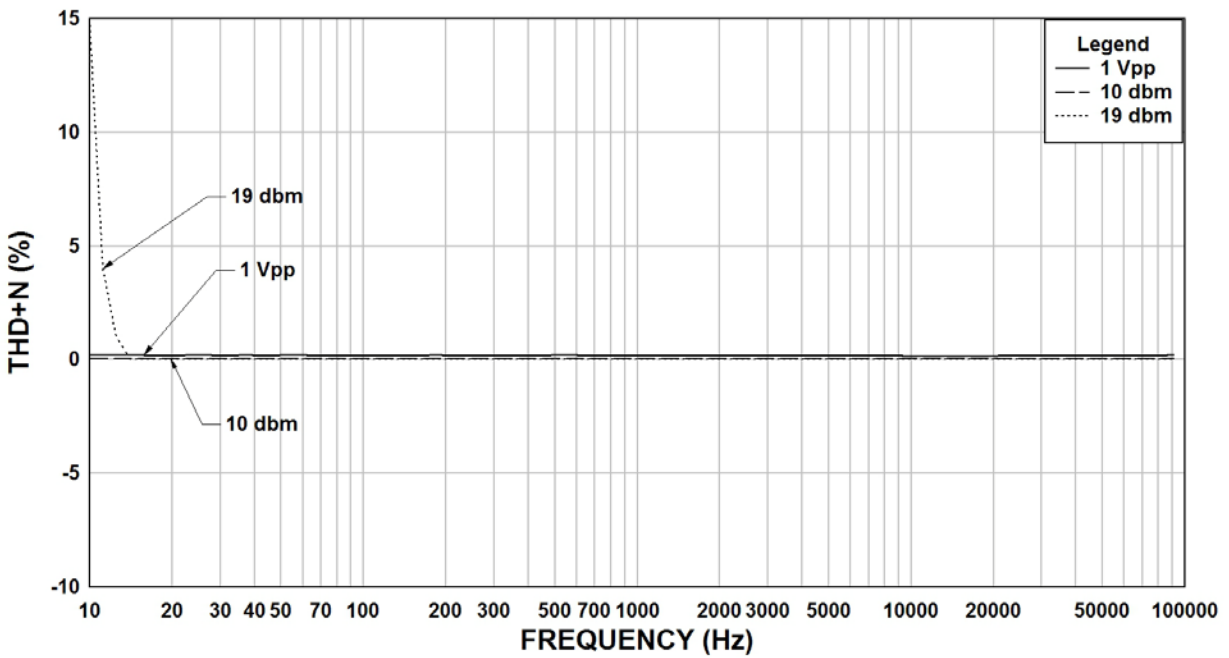
SCHEMATIC DIAGRAM



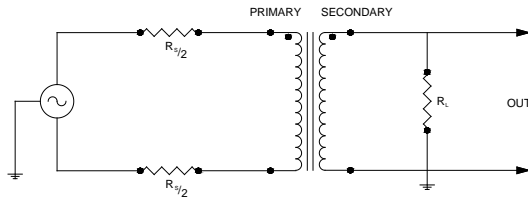
140MEX Rs=100000 RI=1500 Frequency Response



140MEX Rs=100K, RI=1500 THD+N



TYPICAL TEST CIRCUIT



Measurement instruments
 Hp4192a impedance analyzer
 Hp3456a DVM
 Keithley 2002 DVM
 D scope series iii audio analyzer

This drawing and the information in it is the property of Hammond Manufacturing. It may not be reproduced, transmitted or used in any manner whatsoever without the written permission of Hammond Manufacturing. Data subject to change without notice.