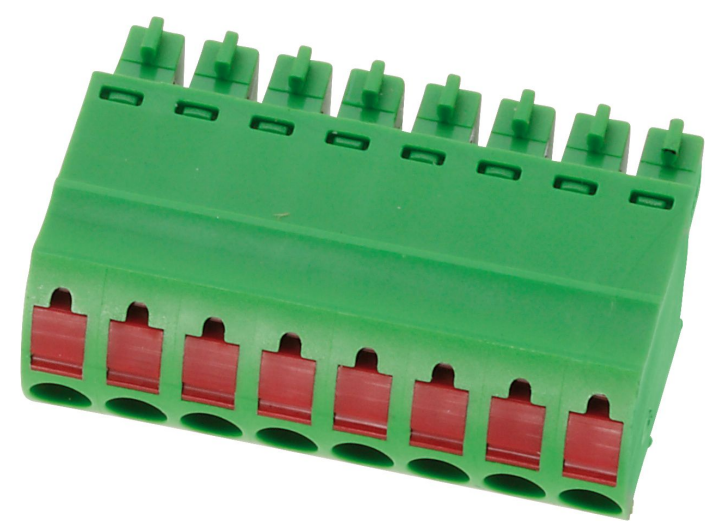


## 14012.1 PFBZ 4551/14/3,81-KD GN



Female socket block, Push-in connection, No. of poles: 14, Width: 53.34 mm, Colour: Green

### Business data

|  |                         |
|--|-------------------------|
| Article number                             | 14012.1                 |
| Article name                               | PFBZ 4551/14/3,81-KD GN |
| GTIN (EAN)                                 | 4044211143893           |
| Connector version                          | Free connector          |
| Packaging unit                             | 50                      |
| Quantity unit                              | PC                      |
| Packaging type                             | Carton                  |
| Type of banding                            | Without                 |
| Weight per piece (not including packaging) | 10.36 g                 |
| Weight per piece (including packaging)     | 11.06 g                 |
| Unit of weight                             | G                       |
| Customs number                             | 85366930                |
| Country of origin                          | QU                      |
| Colour                                     | Green                   |

### Technical data

#### Dimensions

|             |          |
|-------------|----------|
| Length      | 11.3 mm  |
| Width       | 53.34 mm |
| Width left  | 1.905 mm |
| Width right | 1.905 mm |
| Height      | 21.1 mm  |
| Pitch       | 3.81 mm  |

#### Ratings

|                       |                     |
|-----------------------|---------------------|
| Rated voltage         | 160 V               |
| Rated current         | 10 A                |
| Rated cross-section   | 1.5 mm <sup>2</sup> |
| Rated impulse voltage | 2.5 kV              |
| Overvoltage category  | III                 |
| Contamination degree  | 3                   |

#### Connection data

|  |                      |
|--|----------------------|
| Connection principle                                     | Push-in connection   |
| Angle of wire connection/contact                         | 0°/180° (horizontal) |
| Number of plug-in rows                                   | 1                    |
| No. of poles   | 14                   |
| Contact version  | Female connector     |
| Wire cross-section single-core (rigid) / stranded, min.  | 0.14 mm <sup>2</sup> |
| Wire cross-section single core (rigid)/stranded, max.    | 2.5 mm <sup>2</sup>  |
| Wire cross-section stranded, min.                        | 0.14 mm <sup>2</sup> |
| Wire cross-section stranded, max.                        | 1.5 mm <sup>2</sup>  |
| Wire cross-section stranded with wire-end ferrules, min. | 0.25 mm <sup>2</sup> |
| Wire cross-section stranded with wire-end ferrules, max. | 1 mm <sup>2</sup>    |
| Wire cross-section AWG, min.                             | 26                   |
| Wire cross-section AWG, max.                             | 16                   |
| Stripping length   | 11 mm                |

### Technical data

#### Materials

|                           |                 |
|---------------------------|-----------------|
| Insulation housing        | Polyamide 6.6   |
| Flammability class UL 94  | V-0             |
| Working temperature, min. | -30 °C          |
| Working temperature, max. | 105 °C          |
| Contact spring            | Copper alloy    |
| Terminal spring           | Stainless steel |

#### Further technical data

|  |                             |
|--|-----------------------------|
| Storage temperature, min.                      | -40 °C                      |
| Storage temperature, max.                      | 105 °C                      |
| Insulation resistance                          | 1*10 <sup>13</sup> Ohm x cm |
| Creepage-current resistance                    | CTI 600                     |
| Glow wire flammability index GWFI              | GWFI 850                    |
| GWFI after-glow time                           | 30 Sek.                     |
| Glow wire ignition temperature GWIT            | GWIT 775 °C                 |
| GWIT exposure time                             | 5 Sek.                      |
| Connection cycles, in compliance with standard | 5                           |
| Plug-in cycles acc. to standard                | 100                         |

#### Environmental Product Compliance

|                                |            |
|--------------------------------|------------|
| REACH Conform                  | yes        |
| REACH Reference date           | 2023-06-14 |
| REACH Candidate Substance Note | No         |
| RoHS Conform                   | yes        |

### Approvals

#### cUL Recognized

|  |                 |
|--|-----------------|
| cUL approval   | CSA 22.2 No.158 |
| cUL Usegroup B: rated voltage                        | 300 V           |
| cUL Usegroup B: rated current                        | 10 A            |
| cUL Usegroup D: rated voltage                        | 300 V           |
| cUL Usegroup D: rated current                        | 10 A            |
| cUL wire cross-section single-core (rigid) AWG, min. | 26              |
| cUL wire cross-section single-core (rigid) AWG, max. | 16              |
| cUL wire cross-section stranded AWG, min.            | 26              |
| cUL wire cross-section stranded AWG, max.            | 16              |
| cUL wire material                                    | Cu              |
| cUL Recognized                                       | 1               |

#### UL Recognized

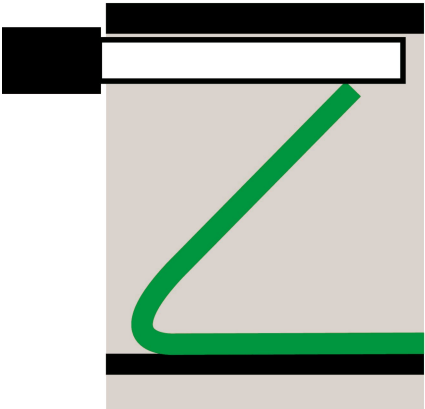
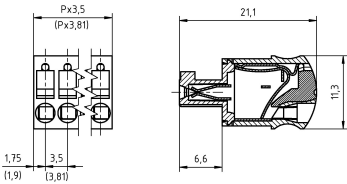
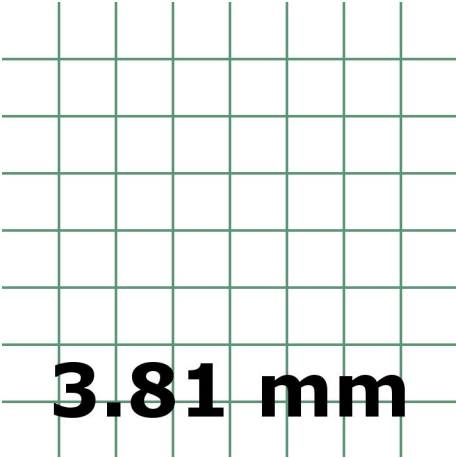
|   |         |
|---|---------|
| UL approval   | UL 1059 |
| UL Usegroup B: rated voltage                        | 300 V   |
| UL Usegroup B: rated current                        | 10 A    |
| UL Usegroup D: rated voltage                        | 300 V   |
| UL Usegroup D: rated current                        | 10 A    |
| UL wire cross-section single-core (rigid) AWG, min. | 26      |
| UL wire cross-section single-core (rigid) AWG, max. | 16      |
| UL wire cross-section stranded AWG, min.            | 26      |
| UL wire cross-section stranded AWG, max.            | 16      |
| UL wire material                                    | Cu      |
| UL factory wiring                                   | 1       |
| UL field wiring                                     | 1       |
| UL Recognized                                       | 1       |

### Approvals

#### VDE approval

|   |                      |
|---|----------------------|
| VDE approval  | DIN EN 61984         |
| VDE approval granted                                | yes                  |
| VDE rated voltage                                   | 160 V                |
| VDE rated current                                   | 10 A                 |
| VDE rated current wire cross-section rigid, min.    | 3 A                  |
| VDE rated current wire cross-section rigid, max.    | 10 A                 |
| VDE rated current wire cross-section stranded, min. | 3 A                  |
| VDE rated current wire cross-section stranded, max. | 10 A                 |
| VDE rated impulse voltage                           | 2,5 kV               |
| VDE wire cross-section rigid, min.                  | 0.14 mm <sup>2</sup> |
| VDE wire cross-section rigid, max.                  | 2.5 mm <sup>2</sup>  |
| VDE wire cross-section stranded, min.               | 0.14 mm <sup>2</sup> |
| VDE wire cross-section stranded, max.               | 1.5 mm <sup>2</sup>  |
| VDE overvoltage category                            | III                  |
| VDE contamination degree                            | 3                    |

Media



---

### Accessories

---