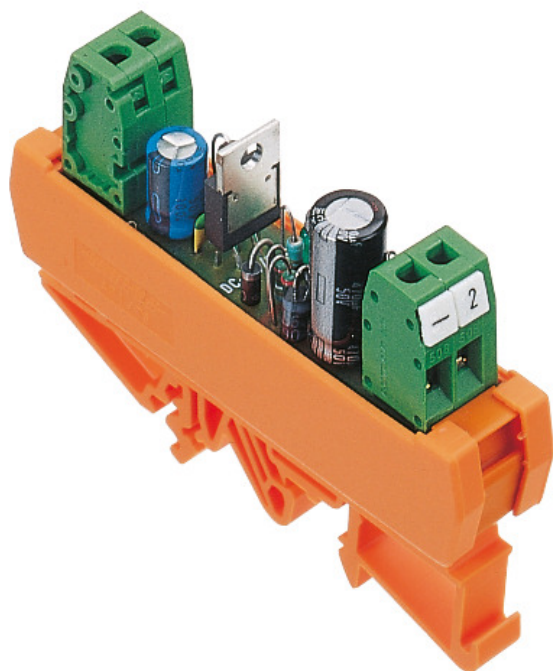


# Data sheet

## 1343.9 DC-DC/24-0,5



DC/DC converter module, regulated, Screw connection, Mounting type: Mounting rail TS 35, Input: 1-phase, Output: 24 VDC/0.5 A

### Business data

Article number	1343.9
Article name	DC-DC/24-0,5
GTIN (EAN)	4044211135942
Packaging unit	1
Quantity unit	PC
Weight per piece (not including packaging)	42 g
Weight per piece (including packaging)	100 g
Unit of weight	G
Customs number	85423990
Country of origin	NL
Product description	Converter module

### Technical data

#### Dimensions

Length	18 mm
Width	87 mm
Height TS 35/7.5	57 mm

#### Ratings

Overvoltage category	III
Contamination degree	2

#### Connection data

Connection principle	Screw connection
Wire cross-section single core (rigid), min.	0.2 mm <sup>2</sup>
Wire cross-section single-core (rigid), max.	4 mm <sup>2</sup>
Wire cross-section stranded, min.	0.2 mm <sup>2</sup>
Wire cross-section stranded, max.	2.5 mm <sup>2</sup>
Wire cross-section stranded with wire-end ferrules, min.	0.2 mm <sup>2</sup>
Wire cross-section stranded with wire-end ferrules, max.	2.5 mm <sup>2</sup>
Stripping length	7 mm
Torque	0.6 Nm

#### Input data

Input voltage DC min.	26,8 V
Input voltage DC max.	40 V
Zero-load current	5 mA
Power consumption	6 W

#### Output data

Output voltage DC	24 V
Regulated DC voltage	✓
Output current	0.25 A
Short-circuit current	0,9 A
Residual ripple	<125 mV

#### Materials

Working temperature, min.	-20 °C
Working temperature, max.	50 °C

# Data sheet

## 1343.9 DC-DC/24-0,5



### Technical data

#### Further technical data

Protection class	IP00
Status display	✓
Efficiency	85 %
Switching frequency	50000 kHz
Short-circuit resistant	✓

#### Environmental Product Compliance

REACH Conform	yes
REACH Reference date	2023-06-14
REACH Candidate Substance Note	No
RoHS Conform	yes

# Data sheet

## 1343.9 DC-DC/24-0,5



---

### Approvals

---

#### Standards and regulations

---

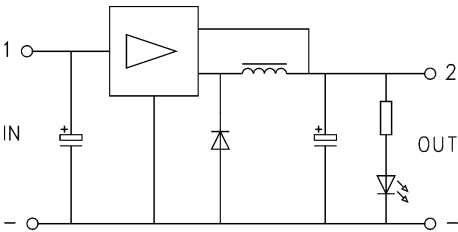
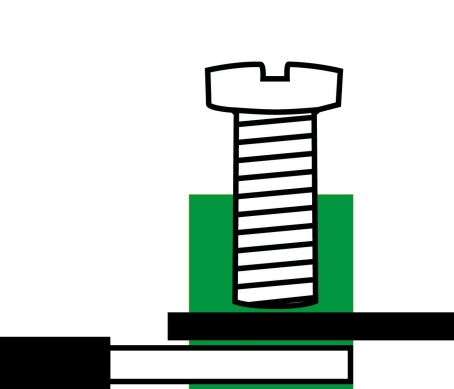
CE compliant	yes
Standards / specifications	DIN EN 50178 / DIN VDE 0110

---

# Data sheet

## 1343.9 DC-DC/24-0,5

### Media



---

**Accessories**

---