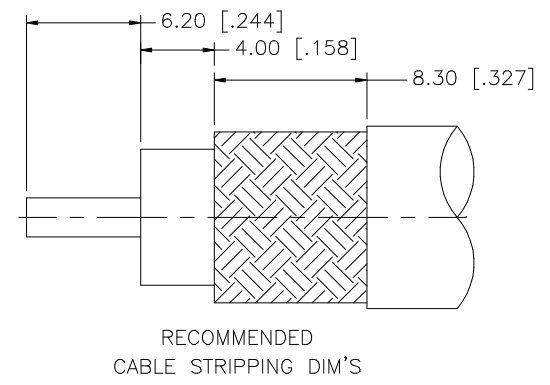
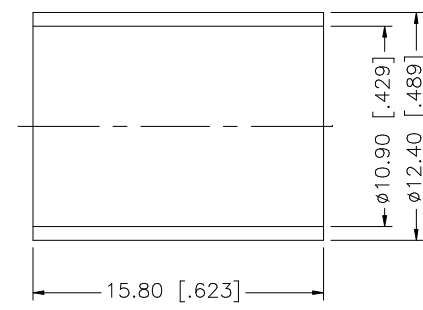
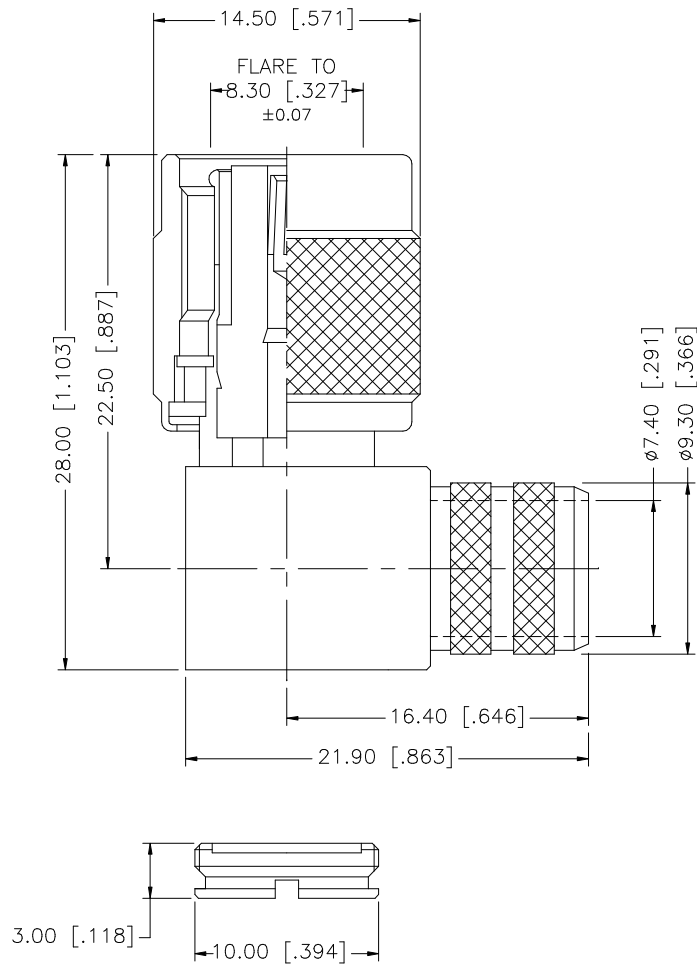


REV.	DATE	DESCRIPTION
NC	04/25/06	INITIAL RELEASE



NOTE:  
1. CRIMPED FERRULE – HEX CRIMP SIZE .429"

NO.	DESCRIPTION	MATERIAL	FINISH	QTY	UNLESS OTHERWISE SPECIFIED DIMENSIONS ARE IN MILLIMETERS. DIMENSIONS IN [ ] ARE IN INCHES AND FOR CUSTOMER REFERENCE ONLY.	APPROVALS	DATE	PART DESCRIPTION							
8					UNLESS OTHERWISE SPECIFIED TOLERANCES FOR MILLIMETERS ARE: 0.5 – 8mm ± 0.20mm 8 – 30mm ± 0.40mm 30 – 120mm ± 0.50mm  UNLESS OTHERWISE SPECIFIED TOLERANCES FOR INCHES ARE: .020 – .315 = ± 0.007" .315 – 1.180 = ± 0.015" 1.180 – 4.724 = ± 0.020"	DRAWN	G.R.S.	04/25/06	<h1 style="color: blue; margin: 0;">Amphenol Connex</h1> <p style="text-align: center; margin: 0;">TNC REVERSE POLARITY R/A CRIMP PLUG (FOR RG-8/U, 213/U, LMR400, BELDEN 9913,9914)</p>						
7				CHECKED											
6						ISSUED									
5	COVER	BRASS	NICKEL	1		SHEET	1 OF 1								
4	FERRULE	COPPER	NICKEL	1				PART NO.							
3	CONTACT PIN	PHOS. BRONZE	GOLD	1				122416RP							
2	INSULATOR	TEFLON	NATURAL	1				DWG. NO.	122416RP.DWG	REV.	NC	SIZE	A	SCALE	NA
1	BODY	BRASS	NICKEL	1				CAD FILE							
					DO NOT SCALE DRAWING			C:/122/122416RP.DWG							