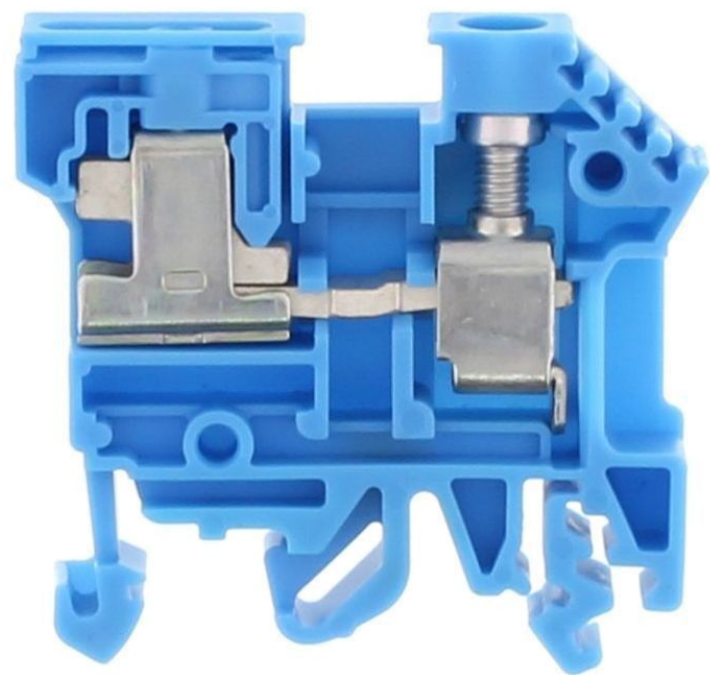


Data sheet

1215.5 NT 6-10 | 10x3 BU



Neutral-disconnect terminal, Screw connection, Mounting type:Mounting rail TS 35/7.5 and TS 32, Rated cross-section: 10 mm², Width: 8 mm, Colour: Blue

RAL: Ähnlich 5005

Business data

Article number	1215.5
Article name	NT 6-10 10x3 BU
GTIN (EAN)	4044211028862
Packaging unit	50
Quantity unit	PC
Weight per piece (not including packaging)	16.8 g
Weight per piece (including packaging)	18.04 g
Unit of weight	G
Customs number	85369010
Country of origin	CZ
Product description	Neutral disconnect terminal
Colour	Blue

Technical data

Dimensions

Length	48 mm
Width	8 mm
Height TS 35/7.5	47 mm
Height TS 32	51.5 mm

Ratings

Rated voltage	400 V
Rated current	57 A
Rated cross-section	10 mm ²
Rated impulse voltage	4 kV
Overvoltage category	III
Contamination degree	3
Maximum power dissipation for nominal condition	1.82 W

Connection data

Connection principle	Screw connection
Connection position	Lateral
Connections	1
Special connection	Busbar 10 x 3 mm
Number of terminals per level	1
Number of levels	1
Wire cross-section single-core (rigid) / stranded, min.	0.2 mm ²
Wire cross-section single core (rigid)/stranded, max.	10 mm ²
Wire cross-section stranded, min.	0.2 mm ²
Wire cross-section stranded, max.	10 mm ²
Wire cross-section stranded with wire-end ferrules, min.	0.2 mm ²
Wire cross-section stranded with wire-end ferrules, max.	10 mm ²
Wire cross-section AWG, min.	22
Wire cross-section AWG, max.	10
Stripping length	12 mm
Screw head	Slotted
Screw threading	M 4
Tightening torque, min.	1.2 Nm
Tightening torque, max.	2 Nm

Data sheet

1215.5 NT 6-10 | 10x3 BU



Technical data

Materials

Insulation housing	Polyamide 6.6
Flammability class UL 94	V-2
Working temperature, min.	-40 °C
Working temperature, max.	105 °C

Further technical data

Mounting type	Mounting rail TS 35/7.5 and TS 32
Gauge plug acc. to EN 60 947-1	A5
End plate required	✓
Version of lengthwise partition	Sliding

Environmental Product Compliance

REACH Conform	yes
REACH Reference date	2023-06-14
REACH Candidate Substance Note	No
RoHS Conform	yes

Approvals

Standards and regulations

EAC approval	TR ZU 004/2011
EAC approval granted	yes

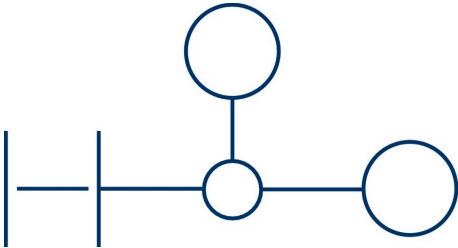
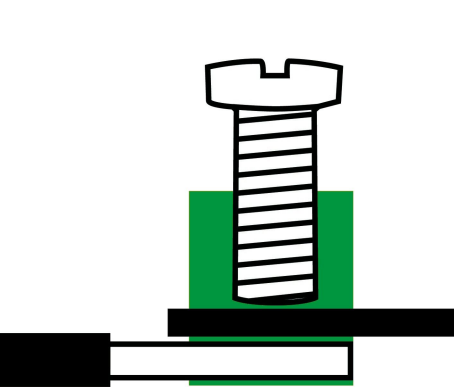
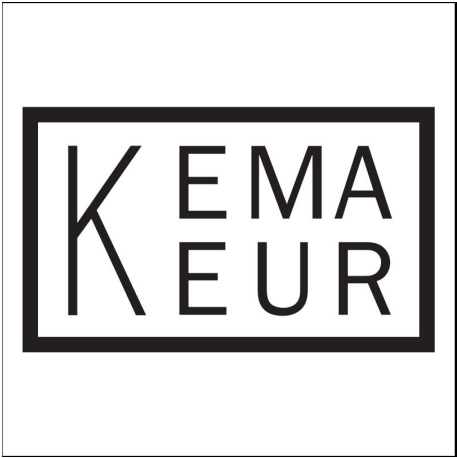
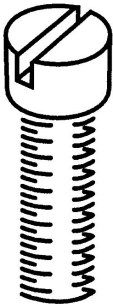
KEMA KEUR approval

KEMA KEUR approval	EN 60947-7-1:2009
KEMA KEUR approval granted	yes
KEMA rated voltage	400 V
KEMA rated current	57 A
KEMA rated impulse voltage	4 kV
KEMA wire cross-section single core (rigid), min.	0.2 mm ²
KEMA wire cross-section single-core (rigid), max.	10 mm ²
KEMA wire cross-section stranded, min.	0.2 mm ²
KEMA wire cross-section stranded, max.	10 mm ²
KEMA torque, min.	1.2 Nm
KEMA torque, max.	2 Nm
KEMA torque busbar, min.	0.5 Nm
KEMA torque busbar, max.	1 Nm

Media

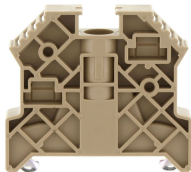
EAC

M4



Accessories

End stop



End stop, Mounting type: Mounting rail TS 35/7.5, Width: 9.5 mm, Colour: Beige

Article number	Article name	GTIN (EAN)	Packaging unit
<u>2828.0</u>	ES 35/K/ST BG	4044211055547	50

Fixing plate



Plate for busbar, Colour: Blue

Article number	Article name	GTIN (EAN)	Packaging unit
<u>2576.5</u>	HP 10x3 BU	4044211053703	20 ST

Test plug



Test plug, Colour: Red

Article number	Article name	GTIN (EAN)	Packaging unit
<u>2007.0</u>	PS 2,3	4044211048105	20 ST

Neutral busbar



Busbar, Material: Brass, Colour: natural

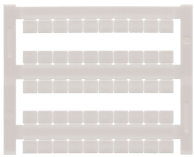
Article number	Article name	GTIN (EAN)	Packaging unit
<u>2128.0</u>	Ssch 10x3 MS	4044211049478	1 M



Busbar, Material: Copper, Colour: natural

Article number	Article name	GTIN (EAN)	Packaging unit
<u>2129.0</u>	Ssch 10x3 CU	4044211049485	1 M

Quick marking



Terminal marker / Pocket Maxicard, Length: 5 mm, Width: 6 mm, Colour: White

Article number	Article name	GTIN (EAN)	Packaging unit
<u>4702.7</u>	PMC SB 6/50 WH	4044211089986	500 ST

Screwdriver

Screwdriver with bare blade, Colour: Black-grey



Article number	Article name	GTIN (EAN)	Packaging unit
<u>1087.0</u>	SDB 0,8x4,0	4044211014803	1 ST