

ANNA-40-6-S

~15° spot beam with 6 optics

SPECIFICATION:

Dimensions	Ø 40.0 mm
Height	10.7 mm
Fastening	glue, pin
ROHS compliant	yes ⓘ

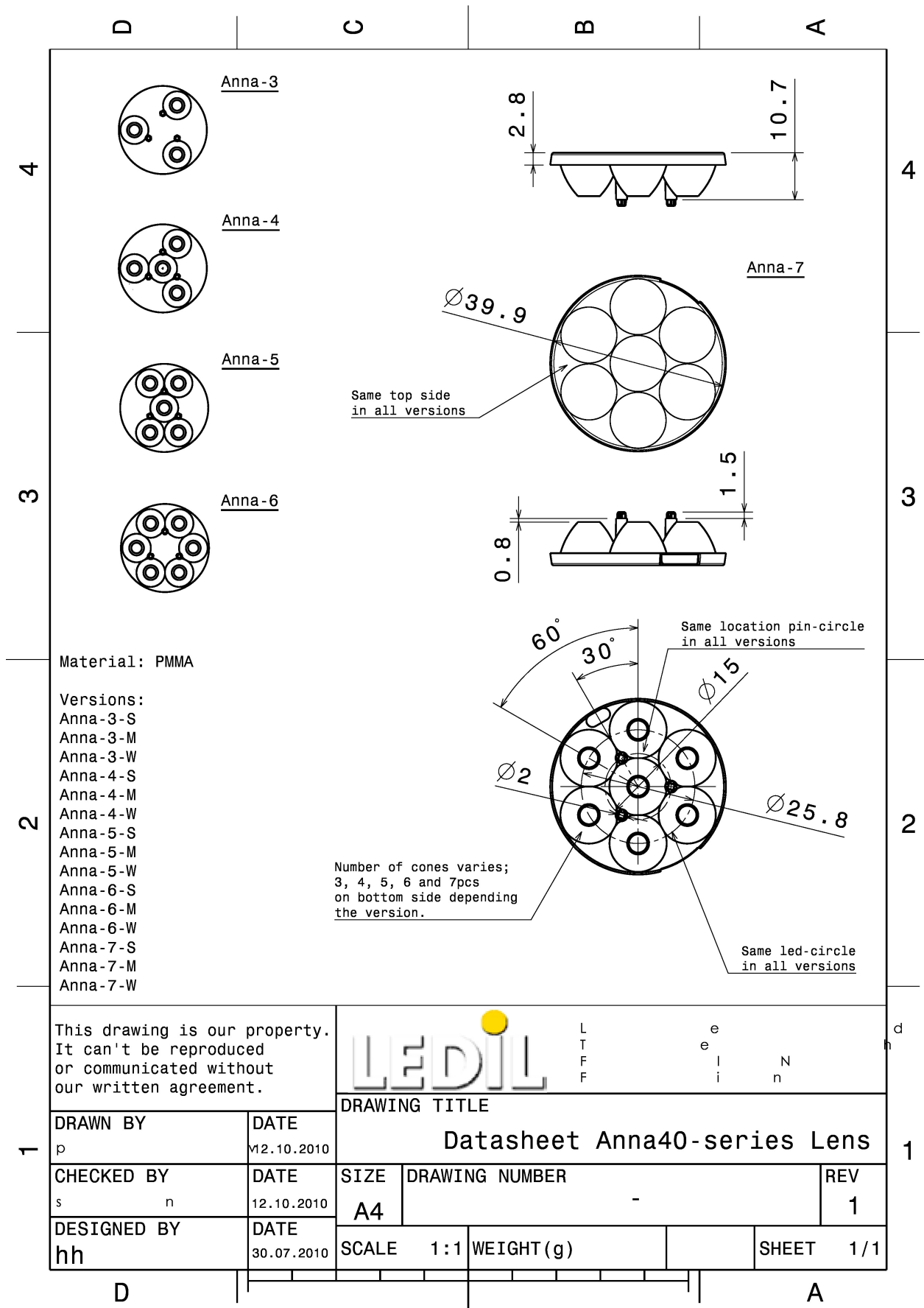


MATERIALS:

Component	Type	Material	Colour	Finish
ANNA-40-6-S	Multi-lens	PMMA	clear	

ORDERING INFORMATION:

Component	Qty in box	MOQ	MPQ	Box weight (kg)
C11805_ANNA-40-6-S » Box size: 480 x 280 x 300 mm	760	120	40	7.7



See also our general installation guide: www.ledil.com/installation_guide

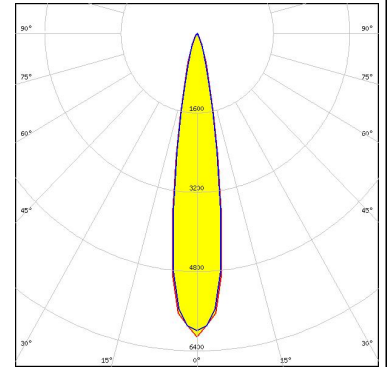
OPTICAL RESULTS (MEASURED):

<p>CREE → LED</p> <p>LED XP-E FWHM / FWTM 12.0° / 38.0° Efficiency 93 % Peak intensity 12.7 cd/lm LEDs/each optic 1 Light colour White Required components:</p>	
<p>CREE → LED</p> <p>LED XP-G FWHM / FWTM 18.0° / 39.0° Efficiency 93 % Peak intensity 5.9 cd/lm LEDs/each optic 1 Light colour White Required components:</p>	
<p>LUMILEDS</p> <p>LED LUXEON A FWHM / FWTM 19.0° / 40.0° Efficiency 87 % Peak intensity 5.7 cd/lm LEDs/each optic 1 Light colour White Required components:</p>	
<p>LUMILEDS</p> <p>LED LUXEON Rebel FWHM / FWTM 13.0° / 28.0° Efficiency 92 % Peak intensity 9.3 cd/lm LEDs/each optic 1 Light colour White Required components:</p>	

OPTICAL RESULTS (MEASURED):

LUMILEDS

LED LUXEON Rebel ES
 FWHM / FWTM 18.0° / 36.0°
 Efficiency 93 %
 Peak intensity 6.1 cd/lm
 LEDs/each optic 1
 Light colour White
 Required components:



NICHIA

LED NCSxx19A
 FWHM / FWTM 16.0° / 35.0°
 Efficiency 91 %
 Peak intensity 6.7 cd/lm
 LEDs/each optic 1
 Light colour White
 Required components:

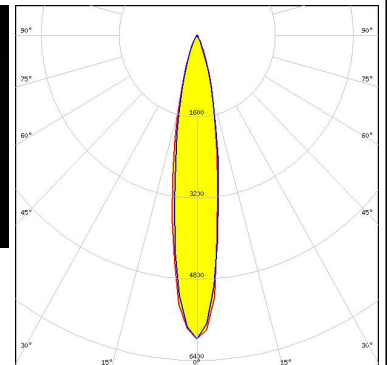
NICHIA

LED NVSxx19A
 FWHM / FWTM 19.0° / 42.0°
 Efficiency 91 %
 Peak intensity 4.9 cd/lm
 LEDs/each optic 1
 Light colour White
 Required components:

OSRAM

Opto Semiconductors

LED Duris S5 (2 chip)
 FWHM / FWTM 18.0° / 41.0°
 Efficiency 90 %
 Peak intensity 6 cd/lm
 LEDs/each optic 1
 Light colour White
 Required components:

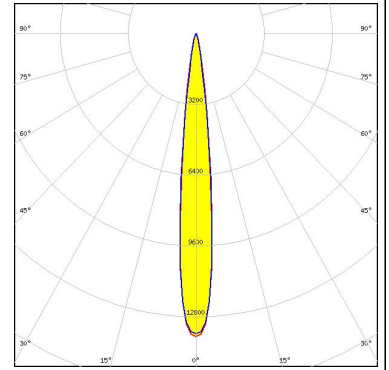


OPTICAL RESULTS (MEASURED):

OSRAM

Opto Semiconductors

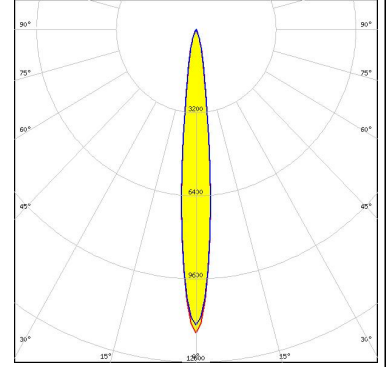
LED OSLOM SSL 150
 FWHM / FWTM 12.0° / 22.0°
 Efficiency 90 %
 Peak intensity 13.7 cd/lm
 LEDs/each optic 1
 Light colour White
 Required components:



OSRAM

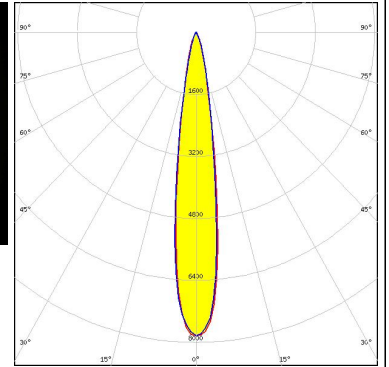
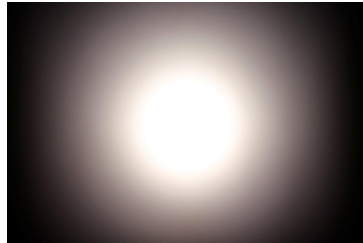
Opto Semiconductors

LED OSLOM SSL 80
 FWHM / FWTM 11.0° / 26.0°
 Efficiency 90 %
 Peak intensity 11.7 cd/lm
 LEDs/each optic 1
 Light colour White
 Required components:

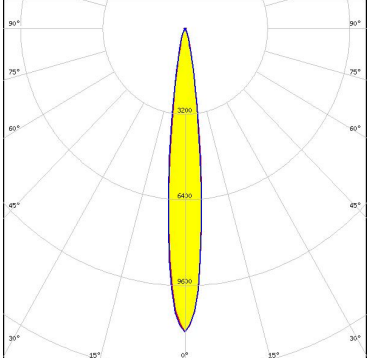
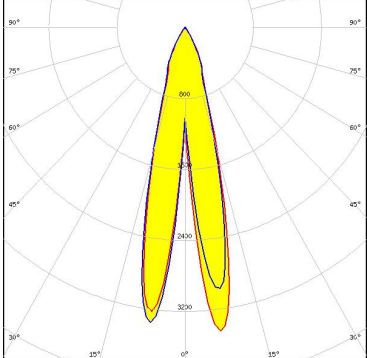


SEOUL SEMICONDUCTOR

LED Z5M
 FWHM / FWTM 15.0° / 32.0°
 Efficiency 92 %
 Peak intensity 7.8 cd/lm
 LEDs/each optic 1
 Light colour White
 Required components:



OPTICAL RESULTS (SIMULATED):

<p>CREE LED</p> <p>LED: XD16 FWHM / FWTM: 13.0° / 26.0° Efficiency: 94 % Peak intensity: 11.3 cd/lm LEDs/each optic: 1 Light colour: White Required components:</p>	
<p>LUMILEDS</p> <p>LED: LUXEON CZ FWHM / FWTM: 28.0° / 55.0° Efficiency: 96 % Peak intensity: 3.5 cd/lm LEDs/each optic: 1 Light colour: Red Required components:</p>	
<p>SHARP</p> <p>LED: Double Dome (GM2BB) FWHM / FWTM: 12.0° Efficiency: % LEDs/each optic: 1 Light colour: White Required components:</p>	

GENERAL INFORMATION:

NOTE: The typical beam angle will be changed by different color, chip size and chip position tolerance. The typical total beam angle is the full angle measured where the luminous intensity is half of the peak value.

MATERIALS:

As part of our continuous research and improvement processes, and to ensure the best possible quality and availability of our products, LEDiL reserves the right to change material grades without notice.

PRODUCT DATA USER AGREEMENT AND DISCLAIMER:

The measured data in the provided downloadable LEDiL Product Datasheets and Mechanical 2D-Drawings is rounded and provided as reference for planning. LEDiL Oy's optical specifications have been verified by conducting performance testing of the products in accordance with the company's quality system. The reported data are averaged results of multiple measurements with typical variation. LEDiL Oy reserves the right to without prior notification make changes and improvements to its products.

LEDiL Oy assumes neither warranty, nor guarantee nor any other liability of any kind for the contents and correctness of the provided data. The provided data has been generated with highest diligence but the provided data may in reality not represent the complete possible variation range of all intrinsic parameters. Therefore, in certain cases a deviation from the provided data could occur.

LEDiL Oy reserves the right to undertake technical changes of its products without further notification which could lead to changes in the provided data. LEDiL Oy assumes no liability of any kind for the possible deviation from any provided data or any other damage resulting from the usage of the provided data.

The user agrees to this disclaimer and user agreement with the download or usage of the provided files.

LEDiL Oy

Joensuunkatu 13
FI-24240 SALO
Finland

LEDiL Inc.

228 West Page Street
Suite D
Sycamore IL 60178
USA

Ledil Optics Technology (Shenzhen) Co., Ltd.

405 , Block B
Casic Motor Building
Shenzhen 518057
P.R.CHINA

Local sales and technical support

[www.ledil.com/
where_to_buy](http://www.ledil.com/where_to_buy)

Shipping locations

Salo, Finland
Hong Kong, China

Distribution Partners

[www.ledil.com/
where_to_buy](http://www.ledil.com/where_to_buy)