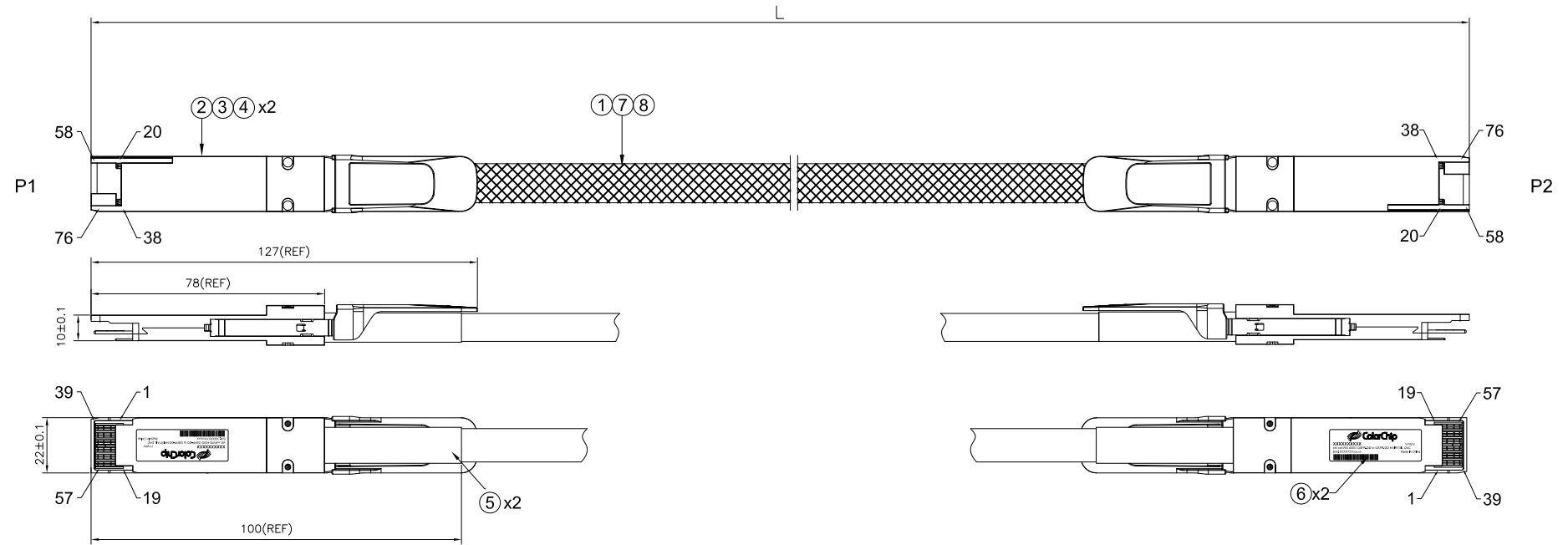


NOTICE: ALL PARTS MUST MEET TO RoHS REQUIREMENTS

REV.	DESCRIPTION	DRAWN	APPROVED	DATE
X1	NEW DRAWING	ZHI YANG	RYAN	2022.04.20



NOTE:
 1. RAW CABLE IMPEDANCE: 100_{-5}^{+10} ohm,
 MATED CONNECTOR IMPEDANCE: 100_{-15}^{+10} ohm,RISE TIME: 25ps(20%~80%).
 2. 100% CONDUCTOR TEST;
 TEST CONDITION:VOLTAGE 5V,INSULATION RESISTANCE 10 Mohm;
 CONDUCTION RESISTANCE MAX 3 ohm .
 3. HIGH-FREQUENCY TEST ACCORDING TO IEEE802.3cd STANDARD.
 4. ALL MATERIAL MUST COMPLY WITH ROHS2.0.

8	BRAID SHIELD	COPPER, BRAID	A/R
7	PLASTIC BRAIDED MESH	PET, BLACK	A/R
6	BACK SHELL LABEL	BACK SHELL LABEL, 29.5*10mm	2
5	HEAT SHINK	BLACK	A/R
4	SR	TPU BLACK	2
3	QSFP DD CONN ASSEMBLY	Zn ALLOY, PLATED Ni OVER Cu +STAINLESS STEEL LATCH+PULLTAB+SPRING+RIVET	2
2	PCBA	QSFP-DD DAC PCB, 76P, Au 30u"Min	2
1	SAS CABLE	SAS CABLE, 56G, ROHS2.0	A/R
ITEM	NAME	DESCRIPTION	Q'TY

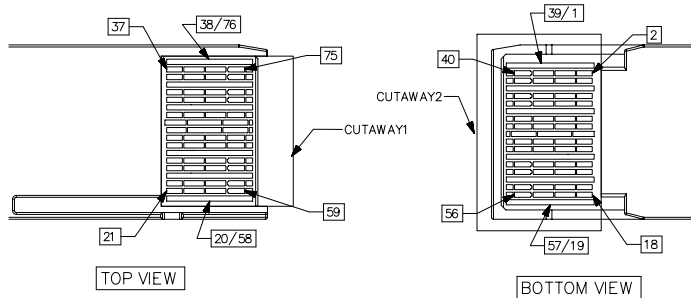
1. * ±0.1 2. ** ±0.1 3. *** ±0.05 4. FRACT.±1/32" 5. ANGULAR ±1/2"	Customer P/N: N/A						
	Customer REV.: N/A						
	PART NO.	SEE TABLE 1	TITLE QSFP-DD TO QSFP-DD 400G ,HAIRTAIL DAC				
	APPROVED	Ryan, Lei	DRAWING NO. SD_P-50-QD-QD-XXXB				
	CHECKED	Xichun,Tan					
DRAWN	Zhi,Yang						
DATE	2022-04-20						
				UNIT	SCALE	SHEET	REV.
				MM	NONE	1/3	A

NOTICE: ALL PARTS MUST MEET TO RoHS REQUIREMENTS

LOW SPEED SIGNALS P1 & P2	
PAD	SIGNAL
8	MODSELL
9	RESETL
10	VCCR_X
11	SCL
12	SDA
27	MODPRSL
28	INTL
29	VCCTX
30	VCC1
31	INIT_MODE
46	OPEN
47	OPEN
48	OPEN
49	OPEN
50	OPEN
65	OPEN
66	OPEN
67	OPEN
68	OPEN
69	OPEN

WIRING DIAGRAM				
P1 END		P2 END		
Pad	Signal	Pad	Signal	
1	GND	20	GND	
2	TX2n	21	RX2n	
3	TX2p	22	RX2p	
4	GND	23	GND	
5	TX4n	24	RX4n	
6	TX4p	25	RX4p	
7	GND	26	GND	
13	GND	32	GND	
14	RX3p	33	TX3p	
15	RX3n	34	TX3n	
16	GND	35	GND	
17	RX1p	36	TX1p	
18	RX1n	37	TX1n	
19	GND	38	GND	
20	GND	1	GND	
21	RX2n	2	TX2n	
22	RX2p	3	TX2p	
23	GND	4	GND	
24	RX4n	5	TX4n	
25	RX4p	6	TX4p	
26	GND	7	GND	
32	GND	13	GND	
33	TX3p	14	RX3p	
34	TX3n	15	RX3n	
35	GND	16	GND	
36	TX1p	17	RX1p	
37	TX1n	18	RX1n	
38	GND	19	GND	

WIRING DIAGRAM				
P1 END		P2 END		
Pad	Signal	Pad	Signal	
39	GND	58	GND	
40	TX6n	59	RX6n	
41	TX6p	60	RX6p	
42	GND	61	GND	
43	TX8n	62	RX8n	
44	TX8p	63	RX8p	
45	GND	64	GND	
51	GND	70	GND	
52	RX7p	71	TX7p	
53	RX7n	72	TX7n	
54	GND	73	GND	
55	RX5p	74	TX5p	
56	RX5n	75	TX5n	
57	GND	76	GND	
58	GND	39	GND	
59	RX6n	40	TX6n	
60	RX6p	41	TX6p	
61	GND	42	GND	
62	RX8n	43	TX8n	
63	RX8p	44	TX8p	
64	GND	45	GND	
70	GND	51	GND	
71	TX7p	52	RX7p	
72	TX7n	53	RX7n	
73	GND	54	GND	
74	TX5p	55	RX5p	
75	TX5n	56	RX5n	
76	GND	57	GND	



1. * ±0.1 2. ** ±0.1 3. *** ±0.05 4. FRACT. ±1/32" 5. ANGULAR ±1/2°	Customer P/N: N/A		TITLE QSFP-DD TO QSFP-DD 400G_HAIRTAIL DAC						
	Customer REV.: N/A								
	PART NO. SEE TABLE 1	APPROVED Ryan, Lei	DRAWING NO. SD_P-50-QD-QD-XXXB						
	CHECKED Xichun, Tan	DRAWN Zhi, Yang							
	DATE 2022-04-20	<table border="1"> <tr> <td>UNIT</td> <td>SCALE</td> <td>SHEET</td> <td>REV.</td> </tr> <tr> <td>MM</td> <td>NONE</td> <td>2/3</td> <td>A</td> </tr> </table>		UNIT	SCALE	SHEET	REV.	MM	NONE
UNIT	SCALE	SHEET	REV.						
MM	NONE	2/3	A						

NOTICE: ALL PARTS MUST MEET TO RoHS REQUIREMENTS

QSFP-DD BACKSHELL LABEL INFORMATION

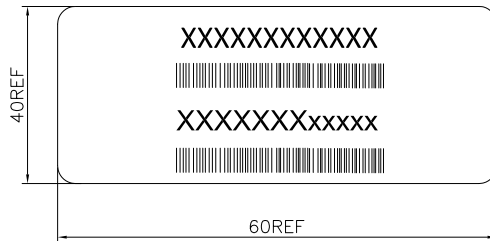


- ← ColorChip LOGO
- ← CUSTOMER P/N: SEE PO FOR DETAIL; WEEK OF MANUFACTURE
- ← DESCRIPTION
- ← SN:SEE SN NOTE;
- ← 128CODE SN: XXXXXXXXxxxxxx

SN NOTE:
XXXXXXXXxxxxxx

00001~99999
PO NO.

ANTI-STATIC BAG LABEL INFORMATION



- ← CUSTOMER P/N: SEE PO FOR DETAIL
- ← 128CODE CUSTOMER P/N
- ← SN:SEE SN NOTE
- ← 128CODE SN:XXXXXXXXxxxxxx

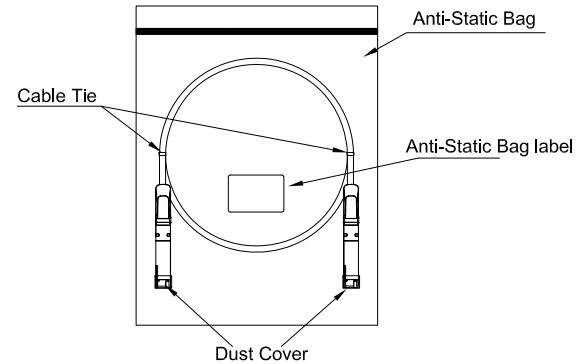


TABLE 1

ITEM	MODEL NUMBER	WDT PN	CUSTOMER PN	L	AWG
1	P-50-QD-QD-005B	1180109603011	TBD	500±50	30
2	P-50-QD-QD-010B	1180109603012	TBD	1000±50	30
3	P-50-QD-QD-015B	1180109603013	TBD	1500±80	30
4	P-50-QD-QD-020B	1180109603014	TBD	2000±80	30
5	P-50-QD-QD-025B	1180109603015	TBD	2500±80	27
6	P-50-QD-QD-030B	1180109603016	TBD	3000±80	27

1. * ±0.1 2. ** ±0.1 3. *** ±0.05 4. FRACT.±1/32" 5. ANGULAR ±1/2"	Customer P/N: N/A		TITLE QSFP-DD TO QSFP-DD 400G ,HAIRTAIL DAC										
	Customer REV.: N/A												
	PART NO. SEE TABLE 1	DRAWING NO. SD_P-50-QD-QD-XXXB											
	APPROVED Ryan, Lei	<table border="1"> <tr> <th>UNIT</th> <th>SCALE</th> <th>SHEET</th> <th>REV.</th> </tr> <tr> <td>MM</td> <td>NONE</td> <td>3/3</td> <td>A</td> </tr> </table>				UNIT	SCALE	SHEET	REV.	MM	NONE	3/3	A
	UNIT	SCALE	SHEET	REV.									
MM	NONE	3/3	A										
CHECKED Xichun,Tan	DATE 2022-04-20												