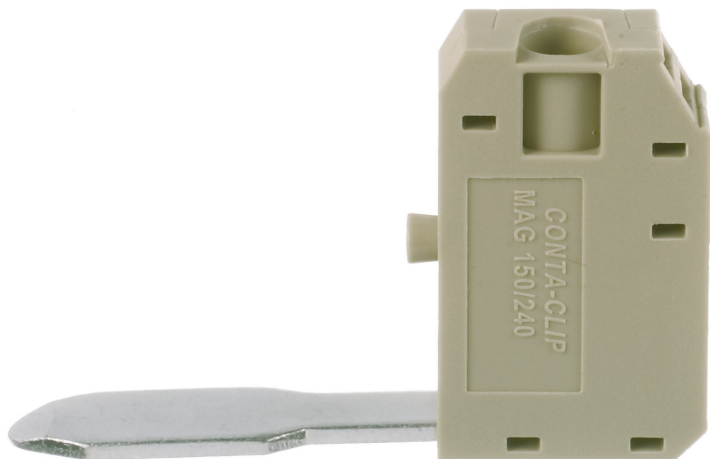


Data sheet

1125.2 MAG 150/240 BG



Measurement pick-off terminal, Screw connection, Mounting type: On base, Rated cross-section: 10 mm², Width: 10 mm, Colour: Beige

Business data

Article number	<u>1125.2</u>
Article name	MAG 150/240 BG
GTIN (EAN)	4044211080921
Packaging unit	10
Quantity unit	PC
Weight per piece (not including packaging)	12.6 g
Weight per piece (including packaging)	12.61 g
Unit of weight	G
Customs number	85369010
Country of origin	DE
Product description	Measurement pick-off terminal
Colour	Beige

Technical data

Dimensions

Length	54.5 mm
Width	10 mm
Height	34 mm

Ratings

Rated voltage	1000 V
Rated current	57 A
Rated cross-section	10 mm ²
Rated impulse voltage	6 kV
Overvoltage category	III
Contamination degree	3

Connection data

Connection principle	Screw connection
Connections	1
Wire cross-section single-core (rigid) / stranded, min.	0.2 mm ²
Wire cross-section single core (rigid)/stranded, max.	10 mm ²
Wire cross-section stranded, min.	0.2 mm ²
Wire cross-section stranded, max.	10 mm ²
Wire cross-section stranded with wire-end ferrules, min.	0.2 mm ²
Wire cross-section stranded with wire-end ferrules, max.	10 mm ²
Wire cross-section AWG, min.	22
Wire cross-section AWG, max.	8
Stripping length	12 mm
Screw head	Slotted
Screw threading	M 4
Tightening torque, min.	1.2 Nm
Tightening torque, max.	2 Nm

Materials

Insulation housing	Polyamide 6.6
Flammability class UL 94	V-2
Working temperature, min.	-40 °C
Working temperature, max.	105 °C

Technical data

Further technical data

Mounting type	On base
Gauge plug acc. to EN 60 947-1	A5

Approvals

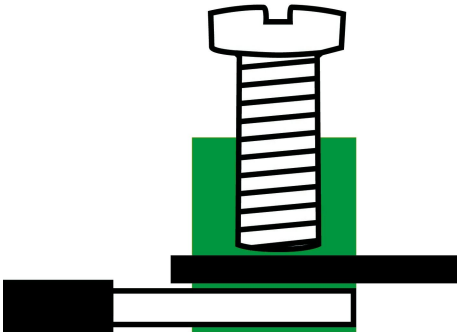
Standards and regulations

EAC approval	TR ZU 004/2011
EAC approval granted	yes

Media



EAC



Accessories

Terminal blocks



Feed-through terminal to mounting surface, Screw connection, Mounting type: Mounting surface, Rated cross-section: 150 mm², Width: 31 mm, Colour: Beige

Article number	Article name	GTIN (EAN)	Packaging unit
<u>1584.2</u>	RK 150-D BG	4044211047740	5



Feed-through terminal, Screw connection, Mounting type: Mounting rail TS 35/7.5 and TS 32, Rated cross-section: 150 mm², Width: 31 mm, Colour: Beige

Article number	Article name	GTIN (EAN)	Packaging unit
<u>1124.2</u>	RK 150 BG	4044211019198	5



Feed-through terminal, Screw connection, Mounting type: Mounting rail TS 35/7.5 and TS 32, Rated cross-section: 240 mm², Width: 36 mm, Colour: Beige

Article number	Article name	GTIN (EAN)	Packaging unit
<u>1126.2</u>	RK 240 BG	4044211019419	5



Feed-through terminal for direct mount, Screw connection, Mounting surface, Rated cross-section: 240 mm², Width: 36 mm, Colour: Beige

Article number	Article name	GTIN (EAN)	Packaging unit
<u>1585.2</u>	RK 240-D BG	4044211047764	5

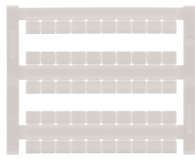
Screwdriver

Screwdriver with bare blade, Colour: Black-grey



Article number	Article name	GTIN (EAN)	Packaging unit
<u>1087.0</u>	SDB 0,8x4,0	4044211014803	1 ST

Quick marking



Terminal marker / Pocket Maxicard, Length: 5 mm, Width: 6 mm, Colour: White

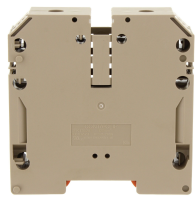
Article number	Article name	GTIN (EAN)	Packaging unit
<u>4702.7</u>	PMC SB 6/50 WH	4044211089986	500 ST

##INVERSE##CONTA-CONNECT



Feed-through terminal, Screw connection, Mounting type: Mounting rail TS 35/7.5, Rated cross-section: 120 mm², Width: 27 mm, Colour: Black-yellow

Article number	Article name	GTIN (EAN)	Packaging unit
<u>17167.2</u>	SRK 120/2A/PE BKYE	4044211189396	5 ST



Feed-through terminal, Screw connection, Mounting type: Mounting rail TS 35/7.5, Rated cross-section: 120 mm², Width: 27 mm, Colour: Beige

Article number	Article name	GTIN (EAN)	Packaging unit
<u>17165.2</u>	SRK 120/2A BG	4044211189372	5



Feed-through terminal to mounting surface, Screw connection, Mounting type: Mounting surface, Rated cross-section: 150 mm², Width: 31 mm, Colour: Beige

Article number	Article name	GTIN (EAN)	Packaging unit
<u>1584.2</u>	RK 150-D BG	4044211047740	5



Ex feed-through terminal ATEX-certified, Screw connection, Mounting type: Mounting rail TS 35/7.5 and TS 32, Rated cross-section: 150 mm², Width: 31 mm, Colour: Beige

Article number	Article name	GTIN (EAN)	Packaging unit
<u>1477.2</u>	RK 150 Ex BG	4044211107864	5



Feed-through terminal, Screw connection, Mounting type: Mounting rail TS 35/7.5 and TS 32, Rated cross-section: 150 mm², Width: 31 mm, Colour: Beige

Article number	Article name	GTIN (EAN)	Packaging unit
<u>1124.2</u>	RK 150 BG	4044211019198	5

##INVERSE##CONTA-CONNECT



Feed-through terminal, Screw connection, Mounting type: Mounting rail TS 35/7.5 and TS 32, Rated cross-section: 240 mm², Width: 36 mm, Colour: Beige

Article number	Article name	GTIN (EAN)	Packaging unit
<u>1126.2</u>	RK 240 BG	4044211019419	5



Ex feed-through terminal ATEX-certified, Screw connection, Mounting type: Mounting rail TS 35/7.5 and TS 32, Rated cross-section: 240 mm², Width: 36 mm, Colour: Beige

Article number	Article name	GTIN (EAN)	Packaging unit
<u>1485.2</u>	RK 240 Ex BG	4044211107888	5



Feed-through terminal for direct mount, Screw connection, Mounting surface, Rated cross-section: 240 mm², Width: 36 mm, Colour: Beige

Article number	Article name	GTIN (EAN)	Packaging unit
<u>1585.2</u>	RK 240-D BG	4044211047764	5