

## STRADA-S

Side emitter beam

### SPECIFICATION:

Dimensions	19.6 x 15.5 mm
Height	6.9 mm
Fastening	pin, screw
ROHS compliant	yes ⓘ

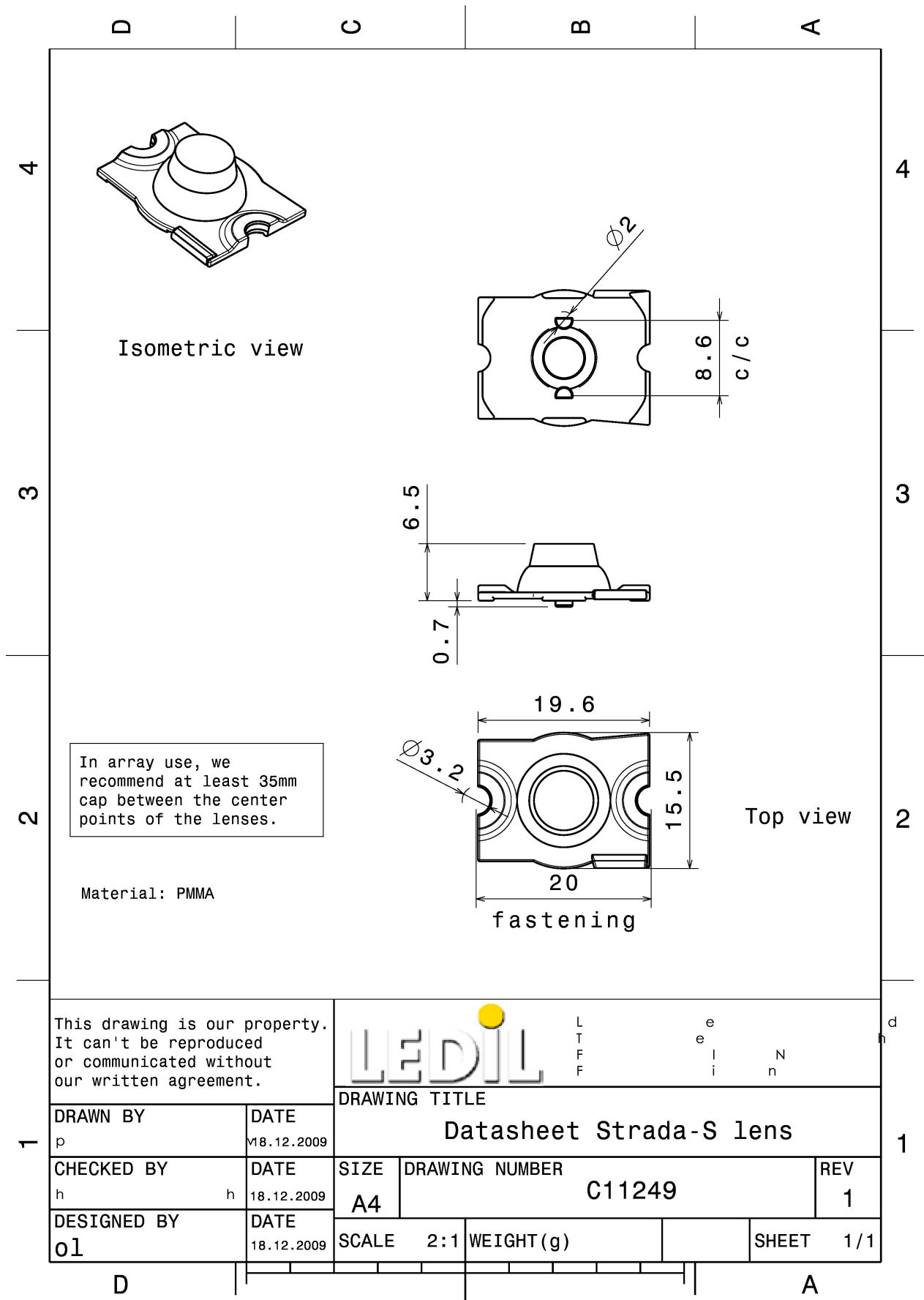
### MATERIALS:

Component	Type	Material	Colour	Finish
STRADA-S	Single lens	PMMA	clear	

### ORDERING INFORMATION:

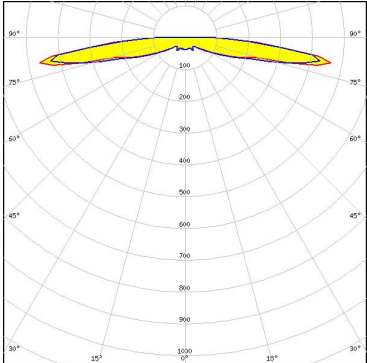
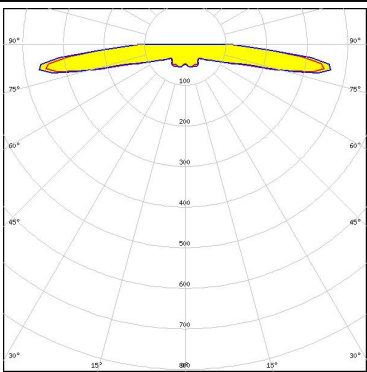
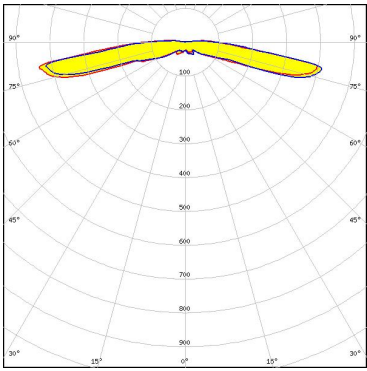
Component	Qty in box	MOQ	MPQ	Box weight (kg)
C11249_STRADA-S » Box size: 480 x 280 x 300 mm	2880	288	144	3.5





See also our general installation guide: [www.ledil.com/installation\\_guide](http://www.ledil.com/installation_guide)

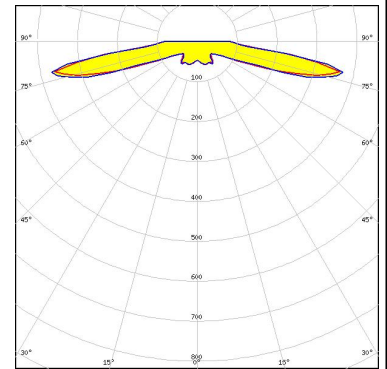
### OPTICAL RESULTS (MEASURED):

<p><b>CREE</b> → <b>LED</b></p> <p>LED                    XP-E            FWHM / FWTM      144.0 + 168.0°            Efficiency            93 %            Peak intensity       0.5 cd/lm            LEDs/each optic    1            Light colour         White            Required components:</p>	
<p><b>CREE</b> → <b>LED</b></p> <p>LED                    XP-G            FWHM / FWTM      144.0 + 176.0°            Efficiency            93 %            Peak intensity       0.4 cd/lm            LEDs/each optic    1            Light colour         White            Required components:</p>	
<p><b>CREE</b> → <b>LED</b></p> <p>LED                    XP-G2            FWHM / FWTM      169.0° / 190.0°            Efficiency            94 %            Peak intensity       0.5 cd/lm            LEDs/each optic    1            Light colour         White            Required components:</p>	
<p><b>LUMILEDS</b></p> <p>LED                    LUXEON Rebel            FWHM / FWTM      162.0 + 138.0°            Efficiency            93 %            Peak intensity       0.4 cd/lm            LEDs/each optic    1            Light colour         White            Required components:</p>	

### OPTICAL RESULTS (MEASURED):

#### LUMILEDS

LED LUXEON Rebel ES  
FWHM / FWTM 137.0 + 166.0°  
Efficiency 93 %  
Peak intensity 0.3 cd/lm  
LEDs/each optic 1  
Light colour White  
Required components:



#### NICHIA

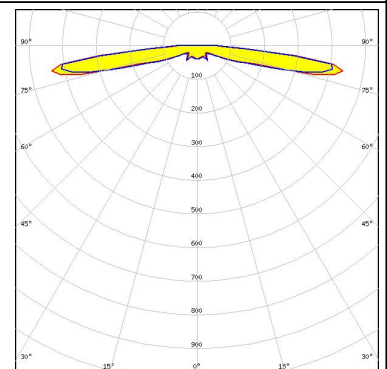
LED NCSxx19A  
FWHM / FWTM 168.0 + 138.0°  
Efficiency 93 %  
Peak intensity 0.4 cd/lm  
LEDs/each optic 1  
Light colour White  
Required components:

#### NICHIA

LED NVSxx19A  
FWHM / FWTM 162.0 + 138.0°  
Efficiency 93 %  
LEDs/each optic 1  
Light colour White  
Required components:

#### OSRAM Opto Semiconductors

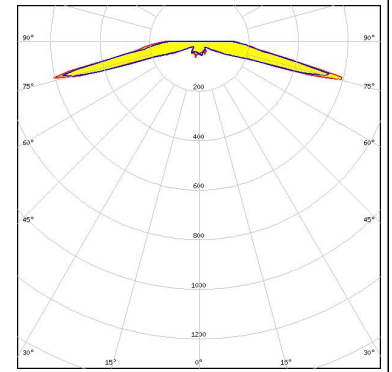
LED OSLOM SSL 150  
FWHM / FWTM 146.0 + 170.0°  
Efficiency 93 %  
Peak intensity 0.4 cd/lm  
LEDs/each optic 1  
Light colour White  
Required components:



### OPTICAL RESULTS (MEASURED):

**OSRAM**  
Opto Semiconductors

LED	OSLON SSL 80
FWHM / FWTM	161.0° / 180.0°
Efficiency	93 %
Peak intensity	0.6 cd/lm
LEDs/each optic	1
Light colour	White
Required components:	



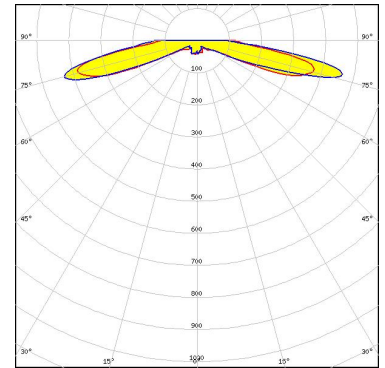
### OPTICAL RESULTS (SIMULATED):

#### LUMILEDS

LED LUXEON A  
FWHM / FWTM 144.0 + 176.0°  
Efficiency %  
LEDs/each optic 1  
Light colour White  
Required components:

#### NICHIA

LED NF2W757G-MT (Tunable White)  
FWHM / FWTM 167.0 + 168.0° / 181.0 + 182.0°  
Efficiency 91 %  
Peak intensity 0.5 cd/lm  
LEDs/each optic 1  
Light colour Tunable White  
Required components:



#### SEMI SEOUL SEMICONDUCTOR

LED Z5  
FWHM / FWTM 144.0 + 176.0°  
Efficiency %  
LEDs/each optic 1  
Light colour White  
Required components:

#### SHARP

LED Double Dome (GM2BB)  
FWHM / FWTM 144.0 + 176.0°  
Efficiency %  
LEDs/each optic 1  
Light colour White  
Required components:

### GENERAL INFORMATION:

NOTE: The typical beam angle will be changed by different color, chip size and chip position tolerance. The typical total beam angle is the full angle measured where the luminous intensity is half of the peak value.

### MATERIALS:

As part of our continuous research and improvement processes, and to ensure the best possible quality and availability of our products, LEDiL reserves the right to change material grades without notice.

### PRODUCT DATA USER AGREEMENT AND DISCLAIMER:

The measured data in the provided downloadable LEDiL Product Datasheets and Mechanical 2D-Drawings is rounded and provided as reference for planning. LEDiL Oy's optical specifications have been verified by conducting performance testing of the products in accordance with the company's quality system. The reported data are averaged results of multiple measurements with typical variation. LEDiL Oy reserves the right to without prior notification make changes and improvements to its products.

LEDiL Oy assumes neither warranty, nor guarantee nor any other liability of any kind for the contents and correctness of the provided data. The provided data has been generated with highest diligence but the provided data may in reality not represent the complete possible variation range of all intrinsic parameters. Therefore, in certain cases a deviation from the provided data could occur.

LEDiL Oy reserves the right to undertake technical changes of its products without further notification which could lead to changes in the provided data. LEDiL Oy assumes no liability of any kind for the possible deviation from any provided data or any other damage resulting from the usage of the provided data.

The user agrees to this disclaimer and user agreement with the download or usage of the provided files.

#### LEDiL Oy

Joensuunkatu 13  
FI-24240 SALO  
Finland

#### LEDiL Inc.

228 West Page Street  
Suite D  
Sycamore IL 60178  
USA

#### Ledil Optics Technology (Shenzhen) Co., Ltd.

# 405 , Block B  
Casic Motor Building  
Shenzhen 518057  
P.R.CHINA

#### Local sales and technical support

[www.ledil.com/  
where\\_to\\_buy](http://www.ledil.com/where_to_buy)

#### Shipping locations

Salo, Finland  
Hong Kong, China

#### Distribution Partners

[www.ledil.com/  
where\\_to\\_buy](http://www.ledil.com/where_to_buy)