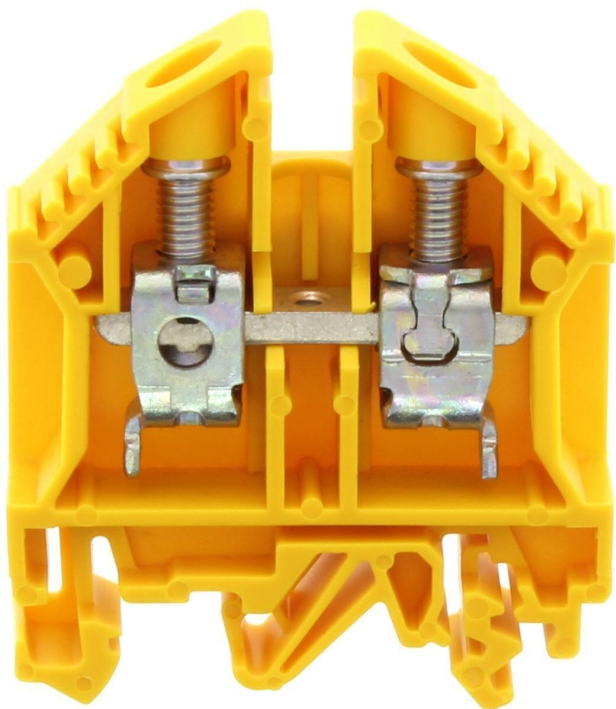


# Data sheet

## 1050.8 RK 16 YE



Feed-through terminal, Screw connection, Mounting type:Mounting rail TS 35/7.5 and TS 32, Rated cross-section: 16 mm², Width: 12 mm, Colour: Yellow

**RAL:** 1026

### Business data

|  |                       |
|--|-----------------------|
| Article number                             | 1050.8                |
| Article name                               | RK 16 YE              |
| GTIN (EAN)                                 | 4044211010683         |
| Packaging unit                             | 50                    |
| Quantity unit                              | PC                    |
| Weight per piece (not including packaging) | 28 g                  |
| Weight per piece (including packaging)     | 29.7 g                |
| Unit of weight                             | G                     |
| Customs number                             | 85369010              |
| Country of origin                          | CZ                    |
| Prio-Article                               | 1050.2                |
| Product description                        | Feed-through terminal |

# Data sheet

## 1050.8 RK 16 YE



### Technical data

#### Dimensions

|                  |         |
|------------------|---------|
| Length           | 50 mm   |
| Width            | 12 mm   |
| Height TS 35/7.5 | 58.5 mm |
| Height TS 32     | 63 mm   |

#### Ratings

|   |                    |
|---|--------------------|
| Rated voltage                                   | 800 V              |
| Rated current                                   | 76 A               |
| Rated cross-section                             | 16 mm <sup>2</sup> |
| Rated impulse voltage                           | 8 kV               |
| Overvoltage category                            | III                |
| Contamination degree                            | 3                  |
| Maximum power dissipation for nominal condition | 2.43 W             |

### Technical data

#### Connection data

|  |                     |
|--|---------------------|
| Connection principle   | Screw connection    |
| Connection position  | Lateral             |
| Connections  | 2                   |
| Number of terminals per level                                | 2                   |
| Number of levels   | 1                   |
| Wire cross-section single-core (rigid) / stranded, min.      | 2.5 mm <sup>2</sup> |
| Wire cross-section single core (rigid)/stranded, max.        | 25 mm <sup>2</sup>  |
| Wire cross-section stranded, min.                            | 2.5 mm <sup>2</sup> |
| Wire cross-section stranded, max.                            | 16 mm <sup>2</sup>  |
| Wire cross-section stranded with wire-end ferrules,min.      | 2.5 mm <sup>2</sup> |
| Wire cross-section stranded with wire-end ferrules,max.      | 16 mm <sup>2</sup>  |
| Wire cross-section AWG, min.                                 | 10                  |
| Wire cross-section AWG, max.                                 | 6                   |
| Stripping length   | 15 mm               |
| Screw head   | Slotted             |
| Screw threading  | M 5                 |
| Tightening torque, min.                                      | 2 Nm                |
| Tightening torque, max.                                      | 4 Nm                |
| Wire cross-section single-core (rigid) / stranded, AWGmax.   | 6                   |
| Wire cross-section single-core (rigid) / stranded, AWGmin.   | 10                  |
| Wire cross-section stranded, AWG max.                        | 6                   |
| Wire cross-section stranded, AWG min.                        | 10                  |
| Wire cross-section stranded with wire-end ferrules, AWG min. | 10                  |

#### Materials

|                           |               |
|---------------------------|---------------|
| Insulation housing        | Polyamide 6.6 |
| Flammability class UL 94  | V-2           |
| Working temperature, min. | -40 °C        |
| Working temperature, max. | 105 °C        |

#### Further technical data

|                                     |                                   |
|-------------------------------------|-----------------------------------|
| Mounting type                       | Mounting rail TS 35/7.5 and TS 32 |
| Gauge plug acc. to EN 60 947-1      | B7                                |
| Number of cross-connection channels | 1                                 |
| End plate required                  | ✓                                 |

# Data sheet

## 1050.8 RK 16 YE



---

### Technical data

---

#### Environmental Product Compliance

---

|                                |    |
|--------------------------------|----|
| REACH Candidate Substance Note | No |
|--------------------------------|----|

---

# Data sheet

## 1050.8 RK 16 YE

### Approvals

#### Standards and regulations

|                      |                |
|----------------------|----------------|
| EAC approval         | TR ZU 004/2011 |
| EAC approval granted | yes            |

#### CSA approval

|                                  |              |
|----------------------------------|--------------|
| CSA approval                     | C22.2 No 158 |
| CSA approval granted             | yes          |
| CSA Usegroup C: rated voltage    | 600 V        |
| CSA Usegroup C: rated current    | 70 A         |
| CSA wire cross-section AWG, min. | 10           |
| CSA wire cross-section AWG, max. | 6            |
| CSA stripping length             | 15 mm        |
| CSA torque, max.                 | 4 Nm         |
| CSA torque, min.                 | 2 Nm         |
| CSA File Number                  | 042110_0_000 |

#### KEMA KEUR approval

|   |                     |
|---|---------------------|
| KEMA KEUR approval                                | EN 60947-7-1:2009   |
| KEMA KEUR approval granted                        | yes                 |
| KEMA rated voltage                                | 800 V               |
| KEMA rated current                                | 76 A                |
| KEMA rated impulse voltage                        | 8 kV                |
| KEMA wire cross-section single core (rigid), min. | 2.5 mm <sup>2</sup> |
| KEMA wire cross-section single-core (rigid), max. | 25 mm <sup>2</sup>  |
| KEMA wire cross-section stranded, min.            | 2.5 mm <sup>2</sup> |
| KEMA wire cross-section stranded, max.            | 16 mm <sup>2</sup>  |

# Data sheet

## 1050.8 RK 16 YE

### Approvals

#### UL Recognized

|   |            |
|---|------------|
| UL approval   | UL 1059    |
| UL Usegroup C: rated voltage                        | 600 V      |
| UL Usegroup C: rated current                        | 65 A       |
| UL wire cross-section single-core (rigid) AWG, min. | 10         |
| UL wire cross-section single-core (rigid) AWG, max. | 6          |
| UL wire cross-section stranded AWG, min.            | 10         |
| UL wire cross-section stranded AWG, max.            | 6          |
| UL torque   | 10.5 Lb In |
| UL wire material                                    | Cu         |
| UL factory wiring                                   | 1          |
| UL field wiring                                     | 1          |
| UL File Number                                      | E95701     |
| UL Recognized                                       | 1          |

#### German Lloyd approval

|                            |   |
|----------------------------|---|
| DNV GL Certificate number  | TAE000014T                                |
| DNV GL Location Classes    | Temperature: B, Humidity: B, Vibration: A |
| DNV GL approval granted    | 1   |
| DNV GL rated cross-section | 16 mm <sup>2</sup>                        |
| DNV GL rated current       | 82 A                                      |
| DNV GL rated voltage       | 750 V                                     |
| DNV GL test standard       | IEC 60947-7-1:2002                        |

Media



### Accessories

#### Cover



Cover, Length: 30 mm, Width: 10.7 mm, Colour: Yellow

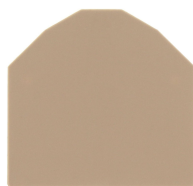
| Article number | Article name | GTIN (EAN)    | Packaging unit |
|----------------|--------------|---------------|----------------|
| <u>2819.0</u>  | AD 1/12/B YE | 4044211055455 | 20 ST          |



Cover, Length: 26.5 mm, Width: 12 mm, Colour: White

| Article number | Article name | GTIN (EAN)    | Packaging unit |
|----------------|--------------|---------------|----------------|
| <u>2969.0</u>  | AD 1/12 WH   | 4044211056988 | 20 ST          |

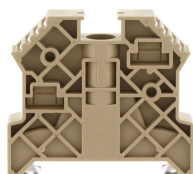
#### End plate



End plate, Width: 1.5 mm, Colour: Beige

| Article number | Article name | GTIN (EAN)    | Packaging unit |
|----------------|--------------|---------------|----------------|
| <u>2104.2</u>  | AP 16 BG     | 4044211049164 | 20             |

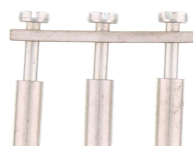
#### End stop



End stop, Mounting type: Mounting rail TS 35/7.5, Width: 9.5 mm, Colour: Beige

| Article number | Article name  | GTIN (EAN)    | Packaging unit |
|----------------|---------------|---------------|----------------|
| <u>2828.0</u>  | ES 35/K/ST BG | 4044211055547 | 50             |

#### Cross-connector



Cross-connector, No. of poles: 3, Mounting type: Can be screwed on, Width: 32 mm, Rated cross-section: 16 mm², Colour: natural

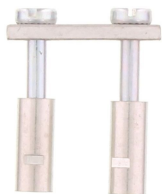
| Article number | Article name | GTIN (EAN)    | Packaging unit |
|----------------|--------------|---------------|----------------|
| <u>2113.0</u>  | Q 3          | 4044211049270 | 20 ST          |



# Data sheet

## 1050.8 RK 16 YE

### Cross-connector



Cross-connector, No. of poles: 2, Mounting type: Can be screwed on, Width: 20.1 mm, Rated cross-section: 16 mm<sup>2</sup>, Colour: natural

| Article number | Article name | GTIN (EAN)    | Packaging unit |
|----------------|--------------|---------------|----------------|
| <u>2112.0</u>  | Q 2          | 4044211049263 | 20 ST          |



Cross-connector, No. of poles: 10, Mounting type: Can be screwed on, Width: 115.3 mm, Rated cross-section: 16 mm<sup>2</sup>, Colour: natural

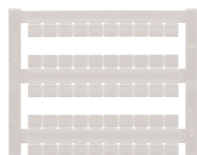
| Article number | Article name | GTIN (EAN)    | Packaging unit |
|----------------|--------------|---------------|----------------|
| <u>2115.0</u>  | Q 10         | 4044211049294 | 10 ST          |



Cross-connector, No. of poles: 4, Mounting type: Can be screwed on, Width: 43.9 mm, Rated cross-section: 16 mm<sup>2</sup>, Colour: natural

| Article number | Article name | GTIN (EAN)    | Packaging unit |
|----------------|--------------|---------------|----------------|
| <u>2114.0</u>  | Q 4          | 4044211049287 | 10 ST          |

### Quick marking



Terminal marker / Pocket Maxicard, Length: 5 mm, Width: 6 mm, Colour: White

| Article number | Article name   | GTIN (EAN)    | Packaging unit |
|----------------|----------------|---------------|----------------|
| <u>4702.7</u>  | PMC SB 6/50 WH | 4044211089986 | 500 ST         |

### Screwdriver



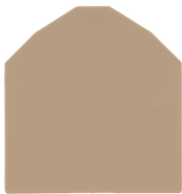
Screwdriver with bare blade, Colour: Black-grey

| Article number | Article name | GTIN (EAN)    | Packaging unit |
|----------------|--------------|---------------|----------------|
| <u>1087.0</u>  | SDB 0,8x4,0  | 4044211014803 | 1 ST           |

### Partition plate

# Data sheet

## 1050.8 RK 16 YE



Partition plate, Width: 1.5 mm, Colour: Beige

| Article number | Article name | GTIN (EAN)    | Packaging unit |
|----------------|--------------|---------------|----------------|
| <u>2105.2</u>  | TW 16 BG     | 4044211049195 | 20             |