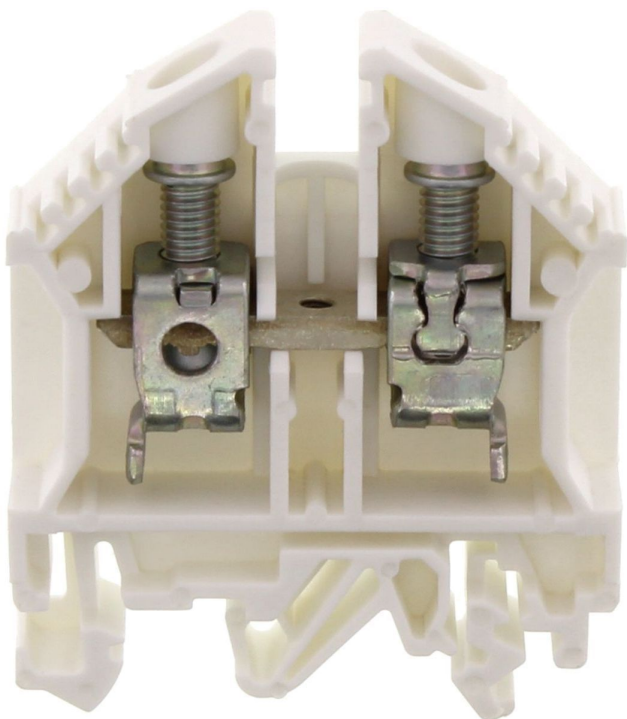


Data sheet

1050.7 RK 16 WH



Feed-through terminal, Screw connection, Mounting type:Mounting rail TS 35/7.5 and TS 32, Rated cross-section: 16 mm², Width: 12 mm, Colour: White

RAL: 9010

Business data

Article number	1050.7
Article name	RK 16 WH
GTIN (EAN)	4044211080297
Packaging unit	50
Quantity unit	PC
Weight per piece (not including packaging)	28 g
Weight per piece (including packaging)	29.7 g
Unit of weight	G
Customs number	85369010
Country of origin	CZ
Prio-Article	1050.2
Product description	Feed-through terminal

Data sheet

1050.7 RK 16 WH



Technical data

Dimensions

Length	50 mm
Width	12 mm
Height TS 35/7.5	58.5 mm
Height TS 32	63 mm

Ratings

Rated voltage	800 V
Rated current	76 A
Rated cross-section	16 mm ²
Rated impulse voltage	8 kV
Overvoltage category	III
Contamination degree	3
Maximum power dissipation for nominal condition	2.43 W

Data sheet

1050.7 RK 16 WH

Technical data

Connection data

Connection principle	Screw connection
Connection position	Lateral
Connections	2
Number of terminals per level	2
Number of levels	1
Wire cross-section single-core (rigid) / stranded, min.	2.5 mm ²
Wire cross-section single core (rigid)/stranded, max.	25 mm ²
Wire cross-section stranded, min.	2.5 mm ²
Wire cross-section stranded, max.	16 mm ²
Wire cross-section stranded with wire-end ferrules,min.	2.5 mm ²
Wire cross-section stranded with wire-end ferrules,max.	16 mm ²
Wire cross-section AWG, min.	10
Wire cross-section AWG, max.	6
Stripping length	15 mm
Screw head	Slotted
Screw threading	M 5
Tightening torque, min.	2 Nm
Tightening torque, max.	4 Nm
Wire cross-section single-core (rigid) / stranded, AWGmax.	6
Wire cross-section single-core (rigid) / stranded, AWGmin.	10
Wire cross-section stranded, AWG max.	6
Wire cross-section stranded, AWG min.	10
Wire cross-section stranded with wire-end ferrules, AWG min.	10

Materials

Insulation housing	Polyamide 6.6
Flammability class UL 94	V-2
Working temperature, min.	-40 °C
Working temperature, max.	105 °C

Further technical data

Mounting type	Mounting rail TS 35/7.5 and TS 32
Gauge plug acc. to EN 60 947-1	B7
Number of cross-connection channels	1
End plate required	✓

Data sheet

1050.7 RK 16 WH



Technical data

Environmental Product Compliance

REACH Conform	Yes
REACH Candidate Substance Note	No
RoHS Conform	Yes

Data sheet

1050.7 RK 16 WH

Approvals

Standards and regulations

EAC approval	TR ZU 004/2011
EAC approval granted	yes

CSA approval

CSA approval	C22.2 No 158
CSA approval granted	yes
CSA Usegroup C: rated voltage	600 V
CSA Usegroup C: rated current	70 A
CSA wire cross-section AWG, min.	10
CSA wire cross-section AWG, max.	6
CSA stripping length	15 mm
CSA torque, max.	4 Nm
CSA torque, min.	2 Nm
CSA File Number	042110_0_000

KEMA KEUR approval

KEMA KEUR approval	EN 60947-7-1:2009
KEMA KEUR approval granted	yes
KEMA rated voltage	800 V
KEMA rated current	76 A
KEMA rated impulse voltage	8 kV
KEMA wire cross-section single core (rigid), min.	2.5 mm ²
KEMA wire cross-section single-core (rigid), max.	25 mm ²
KEMA wire cross-section stranded, min.	2.5 mm ²
KEMA wire cross-section stranded, max.	16 mm ²

Data sheet

1050.7 RK 16 WH

Approvals

UL Recognized

UL approval	UL 1059
UL Usegroup C: rated voltage	600 V
UL Usegroup C: rated current	65 A
UL wire cross-section single-core (rigid) AWG, min.	10
UL wire cross-section single-core (rigid) AWG, max.	6
UL wire cross-section stranded AWG, min.	10
UL wire cross-section stranded AWG, max.	6
UL torque	10.5 Lb In
UL wire material	Cu
UL factory wiring	1
UL field wiring	1
UL File Number	E95701
UL Recognized	1

German Lloyd approval

DNV GL Certificate number	TAE000014T
DNV GL Location Classes	Temperature: B, Humidity: B, Vibration: A
DNV GL approval granted	1
DNV GL rated cross-section	16 mm ²
DNV GL rated current	82 A
DNV GL rated voltage	750 V
DNV GL test standard	IEC 60947-7-1:2002

Media



Accessories

Cover



Cover, Length: 30 mm, Width: 10.7 mm, Colour: Yellow

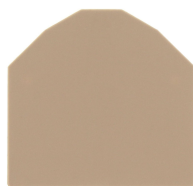
Article number	Article name	GTIN (EAN)	Packaging unit
<u>2819.0</u>	AD 1/12/B YE	4044211055455	20 ST



Cover, Length: 26.5 mm, Width: 12 mm, Colour: White

Article number	Article name	GTIN (EAN)	Packaging unit
<u>2969.0</u>	AD 1/12 WH	4044211056988	20 ST

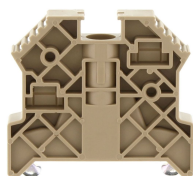
End plate



End plate, Width: 1.5 mm, Colour: Beige

Article number	Article name	GTIN (EAN)	Packaging unit
<u>2104.2</u>	AP 16 BG	4044211049164	20

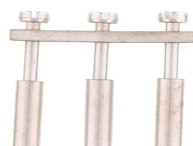
End stop



End stop, Mounting type: Mounting rail TS 35/7.5, Width: 9.5 mm, Colour: Beige

Article number	Article name	GTIN (EAN)	Packaging unit
<u>2828.0</u>	ES 35/K/ST BG	4044211055547	50

Cross-connector



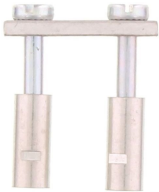
Cross-connector, No. of poles: 3, Mounting type: Can be screwed on, Width: 32 mm, Rated cross-section: 16 mm², Colour: natural

Article number	Article name	GTIN (EAN)	Packaging unit
<u>2113.0</u>	Q 3	4044211049270	20 ST

Data sheet

1050.7 RK 16 WH

Cross-connector



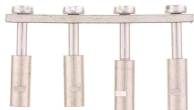
Cross-connector, No. of poles: 2, Mounting type: Can be screwed on, Width: 20.1 mm, Rated cross-section: 16 mm², Colour: natural

Article number	Article name	GTIN (EAN)	Packaging unit
<u>2112.0</u>	Q 2	4044211049263	20 ST



Cross-connector, No. of poles: 10, Mounting type: Can be screwed on, Width: 115.3 mm, Rated cross-section: 16 mm², Colour: natural

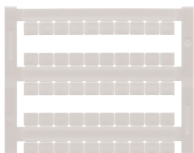
Article number	Article name	GTIN (EAN)	Packaging unit
<u>2115.0</u>	Q 10	4044211049294	10 ST



Cross-connector, No. of poles: 4, Mounting type: Can be screwed on, Width: 43.9 mm, Rated cross-section: 16 mm², Colour: natural

Article number	Article name	GTIN (EAN)	Packaging unit
<u>2114.0</u>	Q 4	4044211049287	10 ST

Quick marking



Terminal marker / Pocket Maxicard, Length: 5 mm, Width: 6 mm, Colour: White

Article number	Article name	GTIN (EAN)	Packaging unit
<u>4702.7</u>	PMC SB 6/50 WH	4044211089986	500 ST

Screwdriver



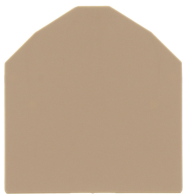
Screwdriver with bare blade, Colour: Black-grey

Article number	Article name	GTIN (EAN)	Packaging unit
<u>1087.0</u>	SDB 0,8x4,0	4044211014803	1 ST

Partition plate

Data sheet

1050.7 RK 16 WH



Partition plate, Width: 1.5 mm, Colour: Beige

Article number	Article name	GTIN (EAN)	Packaging unit
<u>2105.2</u>	TW 16 BG	4044211049195	20