



## MAG-MAID COOLANT CLEAN OUT TOOL SALVAGE MAGNETS

This powerful Rare Earth clean-up tool safely removes metal chips and debris from machinery and work areas. The large comfortable handle is attached to Rare Earth magnets inside the seam-welded, stainless steel tube. To clean this tool, pull the handle away from the stainless steel tube. Collected scrap metal will follow the magnet up the tube until it hits the stripper washer. Once the magnet is past the stripper washer, the magnetic influence will dissipate and the metal falls off. No need to pull or wipe off collected metal.

### Features

- Maximum temperature 180°F (82°C)
- Seam-welded, .053" thick tube prevents denting
- Large grip handle



Diameter (in)	Shaft Length (in)	OAL (in)	Weight (lbs)	Model No.
1	15	19.25	1.25	MM1500EZ
1	36	40.25	2.75	MM3600EZ

### Features

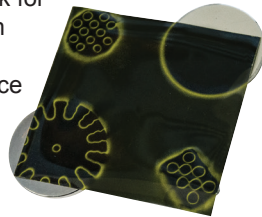
- Retrieves tools, parts, key rings, fishing tackle & more
- Powerful ceramic magnets for wet or dry applications
- HDR3045 has a durable stainless steel case and can retrieve broken drill bits from oil & water wells



Lift - lbs (kg)	Size (in)	Weight (lbs)	Model No.
35.0 (15.88)	3-1/2 Dia. x 2-1/2 L	1.07	DT3500
92.5 (41.96)	5-1/4 x 1-7/8 x 2-3/4	1.80	DT0600
300.0 (136.08)	3 Dia. x 5-3/4 L	5.00	HDR3045

## MAGNETIC VIEWING FILM

This film allows you to identify the magnetic field patterns of magnetic materials and assemblies. The viewing film can be used to check for damage to the magnet material within most types of magnet assemblies. Simply hold the film against the surface of any magnet and the pattern of the magnetic field is revealed. The 3" square sheets are reusable.



**Model No. XX0044**

## CLEAN-OUT RETRIEVERS

### Features

- Retrieve ferrous metal items from tanks, acid baths, oil reservoirs, heat bake ovens, etc.
- Alnico Magnet is attached to a 48 inch wood handle
- Maximum temperature 300°F (148°C)

Lift - lbs (kg)	Diameter (in)	Length (in)	Weight (lbs)	Model No.
12.0 (5.45)	1-3/8	48	1.60	COR12
35.0 (15.88)	2-1/2	48	2.50	COR35

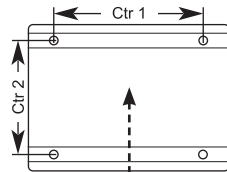
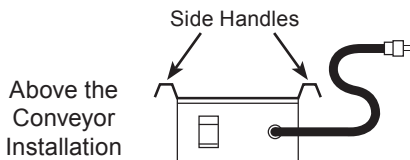


## CONTINUOUS DUTY SURFACE TYPE DEMAGNETIZERS

Surface Type Demagnetizers are designed for stationary or portable use, providing continuous duty operation as work pieces pass the demagnetizer's face plate. This design allows for installation under, over or alongside conveyors for demagnetizing applications.

### Features

- Durable, one-piece face plate
- On/Off switch
- Portable and/or stationary design
- Integrated side handles for hand held operation
- AC On Indicator (DSC423 Only)



Best Direction of Flow  
The Strongest area is located at the center of the demagnetizer



*Note: 10 ft. cord with grounded plug on 120 VAC models only. 240 VAC models have a 6 ft. three wire cord without plug.*

Height (in)	Width (in)	Length (in)	Demagnetization Area (in)	Ctr. 1 (in)	Ctr. 2 (in)	Hole Diameter (in)	Weight (lbs)	Amps (120 VAC)	Amps (240 VAC)	Amps (480 VAC)	Model No.
3-13/16	4-3/4	7-1/4	3 x 4.5	5-5/16	5-3/8	1/4	15.0	2.1	1.1	0.52	DSC423
4-15/16	6-1/4	11-1/4	4 x 6	7-13/16	6-7/8	5/16	33.0	9.0	5.0	2.50	DSC424