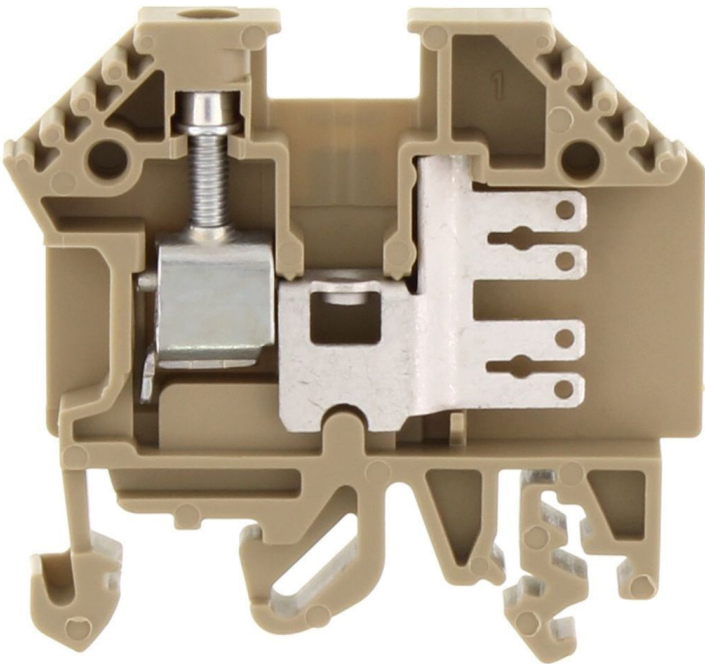


# Data sheet

## 1019.2 SF 2,5-4 BG



Feed-through terminal, Faston Spade connection / screw connection, Mounting type:Mounting rail TS 35/7.5 and TS 32, Rated cross-section: 2.5 mm², Width: 6 mm, Colour: Beige

### Business data

Article number	1019.2
Article name	SF 2,5-4 BG
GTIN (EAN)	4044211004323
Packaging unit	100
Quantity unit	PC
Weight per piece (not including packaging)	8.6 g
Weight per piece (including packaging)	9.5 g
Unit of weight	G
Customs number	85369010
Country of origin	CZ
Product description	Feed-through terminal
Colour	Beige

# Data sheet

## 1019.2 SF 2,5-4 BG

### Technical data

#### Dimensions

Length	48 mm
Width	6 mm
Height TS 35/7.5	47 mm
Height TS 32	52 mm

#### Ratings

Rated voltage	500 V
Rated current FastOn 2.8 / FastOn 6.3	13,5 / 24 A
Rated cross-section	2.5 mm <sup>2</sup>
Rated impulse voltage TS 35 / TS 32	8 / 6 kV
Overvoltage category	III
Contamination degree	3
Maximum power dissipation for nominal condition	0.77 W

#### Connection data

Connection principle	Screw connection + spade connection
Connection position	Lateral
Connections	2 / 1
Connections FastOn 2.8 / FastOn 6.3	2 / 4
Number of terminals per level	3
Number of levels	1
Wire cross-section single-core (rigid) / stranded, min.	0.2 mm <sup>2</sup>
Wire cross-section single core (rigid)/stranded, max.	6 mm <sup>2</sup>
Wire cross-section stranded, min.	0.2 mm <sup>2</sup>
Wire cross-section stranded, max.	6 mm <sup>2</sup>
Wire cross-section stranded with wire-end ferrules, min.	0.2 mm <sup>2</sup>
Wire cross-section stranded with wire-end ferrules, max.	4 mm <sup>2</sup>
Wire cross-section AWG, min.	22
Wire cross-section AWG, max.	10
Stripping length	12 mm
Screw head	Slotted
Screw threading	M 3
Tightening torque, min.	0.5 Nm
Tightening torque, max.	1 Nm

# Data sheet

## 1019.2 SF 2,5-4 BG

### Technical data

#### Materials

Insulation housing	Polyamide 6.6
Flammability class UL 94	V-2
Working temperature, min.	-40 °C
Working temperature, max.	105 °C

#### Further technical data

Mounting type	Mounting rail TS 35/7.5 and TS 32
Gauge plug acc. to EN 60 947-1	A4
Number of cross-connection channels	1
End plate required	✓
Number of test pick-off options	1

#### Environmental Product Compliance

REACH Conform	yes
REACH Reference date	2023-06-14
REACH Candidate Substance Note	No
RoHS Conform	yes

# Data sheet

## 1019.2 SF 2,5-4 BG



### Approvals

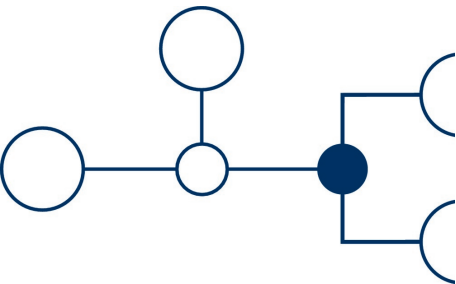
#### Standards and regulations

EAC approval	TR ZU 004/2011
EAC approval granted	yes

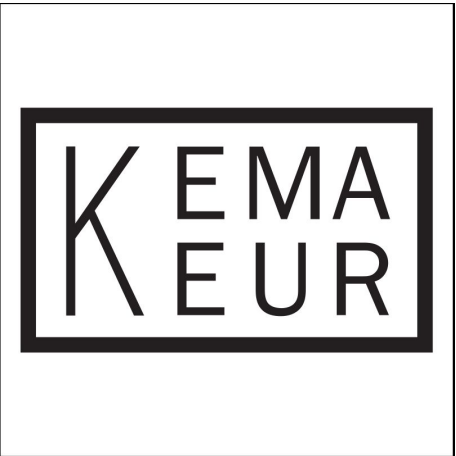
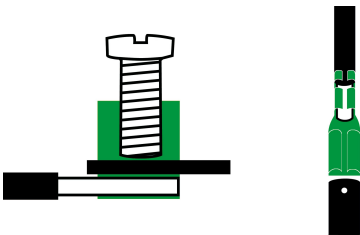
#### KEMA KEUR approval

KEMA KEUR approval	EN 60947-7-1:2009
KEMA KEUR approval granted	yes
KEMA rated voltage	500 V
KEMA rated current FastOn 2.8 / FastOn 6.3	13,5 / 24 A
KEMA rated impulse voltage TS 35 / TS 32	8 / 6 kV
KEMA wire cross-section stranded	2.5 mm <sup>2</sup>
KEMA wire cross-section stranded, screw connection	4 mm <sup>2</sup>
KEMA torque, min.	0.5 Nm
KEMA torque, max.	1 Nm

Media



EAC



### Accessories

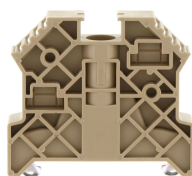
#### End plate



End plate, Width: 1.5 mm, Colour: Beige

Article number	Article name	GTIN (EAN)	Packaging unit
<u>2001.2</u>	AP 2,5-10 BG	4044211047979	50

#### End stop



End stop, Mounting type: Mounting rail TS 35/7.5, Width: 9.5 mm, Colour: Beige

Article number	Article name	GTIN (EAN)	Packaging unit
<u>2828.0</u>	ES 35/K/ST BG	4044211055547	50

#### Insulating sleeve

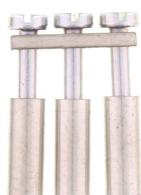
Insulating sleeve

Article number	Article name	GTIN (EAN)	Packaging unit
<u>2429.0</u>	IH 6,3	4044211052140	200 ST

Insulating sleeve

Article number	Article name	GTIN (EAN)	Packaging unit
<u>2435.0</u>	IH 2,8	4044211052256	200 ST

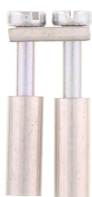
#### Cross-connector



Cross-connector, No. of poles: 3, Mounting type: Can be screwed on, Width: 17 mm, Rated cross-section: 4 mm², Colour: natural

Article number	Article name	GTIN (EAN)	Packaging unit
<u>2020.0</u>	Q 3	4044211048235	50 ST

### Cross-connector



Cross-connector, No. of poles: 2, Mounting type: Can be screwed on, Width: 10.9 mm, Rated cross-section: 4 mm<sup>2</sup>, Colour: natural

Article number	Article name	GTIN (EAN)	Packaging unit
<u>2019.0</u>	Q 2	4044211048228	50 ST



Cross-connector, No. of poles: 4, Mounting type: Can be screwed on, Width: 23.1 mm, Rated cross-section: 4 mm<sup>2</sup>, Colour: natural

Article number	Article name	GTIN (EAN)	Packaging unit
<u>2021.0</u>	Q 4	4044211048242	20 ST



Cross-connector, No. of poles: 10, Mounting type: Can be screwed on, Width: 59.7 mm, Rated cross-section: 4 mm<sup>2</sup>, Colour: natural

Article number	Article name	GTIN (EAN)	Packaging unit
<u>2022.0</u>	Q 10	4044211048259	10 ST

### Insulated cross-connector



Insulated cross-connector, No. of poles: 4, Mounting type: Can be screwed on, Width: 21.9 mm, Colour: Yellow

Article number	Article name	GTIN (EAN)	Packaging unit
<u>2742.2</u>	QI 4 YE	4044211054823	20 ST



Insulated cross-connector, No. of poles: 10, Mounting type: Can be screwed on, Width: 59.7 mm, Colour: Yellow

Article number	Article name	GTIN (EAN)	Packaging unit
<u>2743.2</u>	QI 10 YE	4044211054830	10 ST

# Data sheet

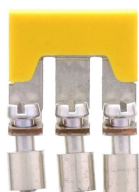
## 1019.2 SF 2,5-4 BG

### Insulated cross-connector



Insulated cross-connector, No. of poles: 2, Mounting type: Can be screwed on, Width: 10.4 mm, Colour: Yellow

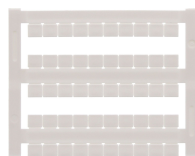
Article number	Article name	GTIN (EAN)	Packaging unit
<u>2740.2</u>	QI 2 YE	4044211054809	50 ST



Insulated cross-connector, No. of poles: 3, Mounting type: Can be screwed on, Width: 16.5 mm, Colour: Yellow

Article number	Article name	GTIN (EAN)	Packaging unit
<u>2741.2</u>	QI 3 YE	4044211054816	50 ST

### Quick marking



Terminal marker / Pocket Maxicard, Length: 5 mm, Width: 6 mm, Colour: White

Article number	Article name	GTIN (EAN)	Packaging unit
<u>4702.7</u>	PMC SB 6/50 WH	4044211089986	500 ST

### Screwdriver



Screwdriver with bare blade, Colour: Black-grey

Article number	Article name	GTIN (EAN)	Packaging unit
<u>1086.0</u>	SDB 0,6x3,5	4044211014797	1 ST

### Partition plate



Partition plate, Width: 1.5 mm, Colour: Beige

Article number	Article name	GTIN (EAN)	Packaging unit
<u>2002.2</u>	TW 2,5-10 BG	4044211048044	50



# Data sheet

## 1019.2 SF 2,5-4 BG

### Insulation plate



Insulation plate, Colour: Beige

Article number	Article name	GTIN (EAN)	Packaging unit
<u>2003.2</u>	TRS 1 BG	4044211048068	100